

**MAHONING COUNTY
OHIO
SMITH TOWNSHIP
Section 7**

**TAX MAP
16172**



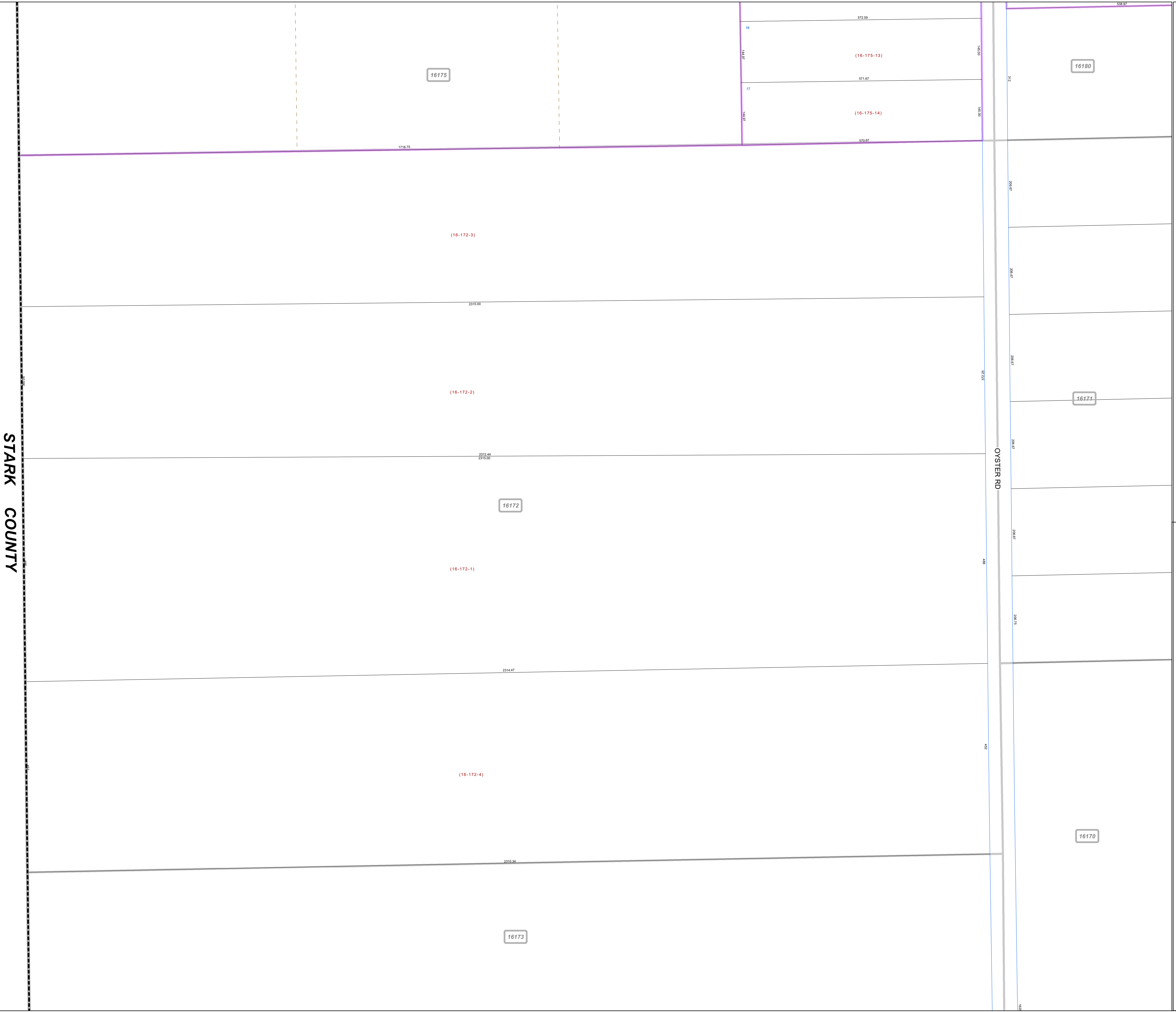
Print Date 12/31/2019

LEGEND

- COUNTY LINE
- TOWNSHIP LINE
- CITY LINE
- VILLAGE LINE
- PLAT OUTLINE
- PARCEL LINE
- OLD PARCEL LINE
- PHASE LINE
- ROAD ROW LINE
- RAILROAD ROW LINE
- (01-20-1.03) PARCEL ID NUMBER
- 345 LOT NUMBER
- BELL PLAT 1 PLAT NAME
- 01004 TAX MAP NUMBER

**SMITH TOWNSHIP
Index Map**

	16176	
	16175	16180
	16172	16171
	16173	16170
		16169



STARK COUNTY