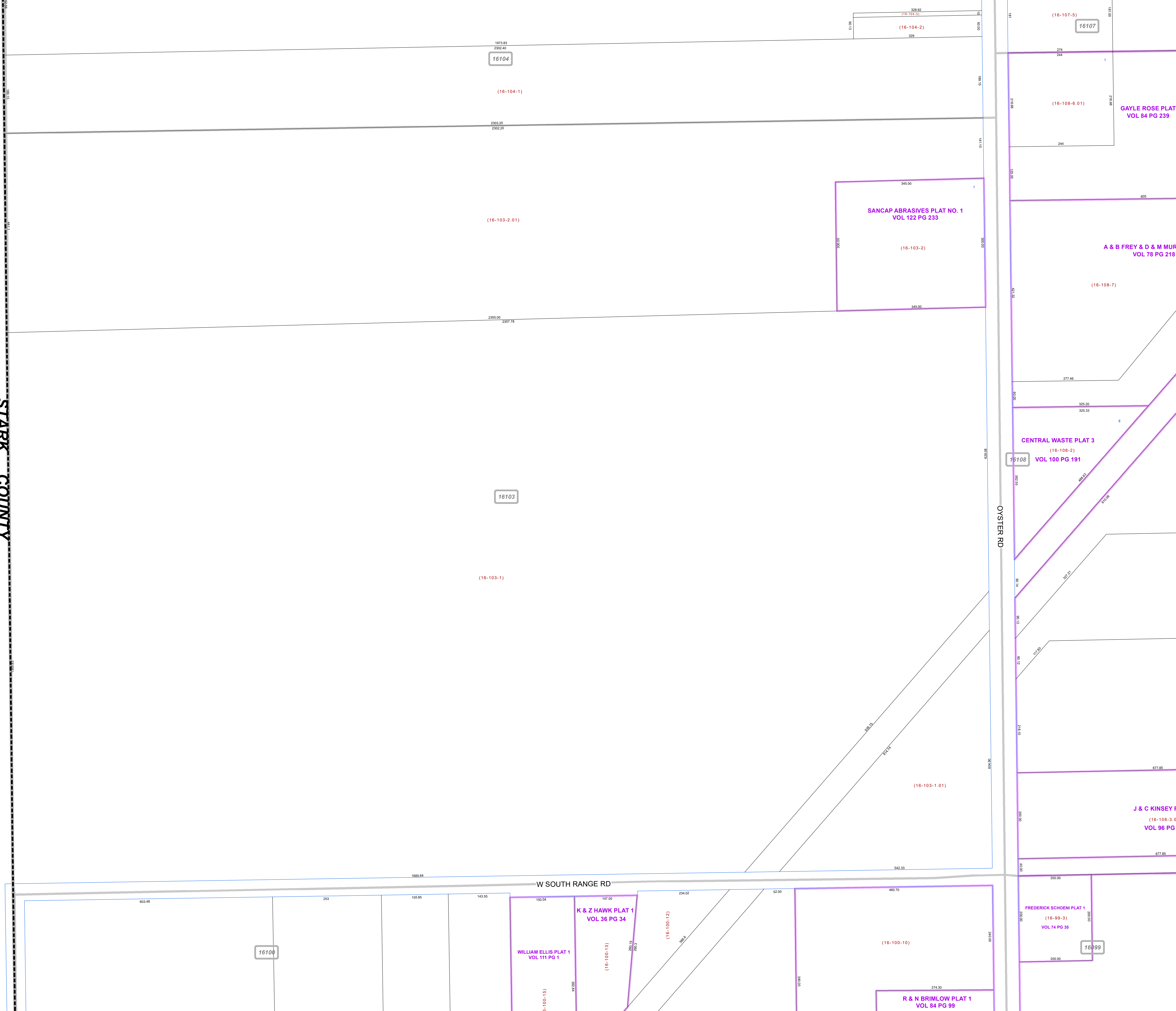


**MAHONING COUNTY**  
**OHIO**  
**SMITH TOWNSHIP**  
*Section 18*  
**TAX MAP**  
**16103**



Print Date 12/31/2019

STARK COUNTY



- LEGEND**
- COUNTY LINE
  - TOWNSHIP LINE
  - CITY LINE
  - VILLAGE LINE
  - PLAT OUTLINE
  - PARCEL LINE
  - OLD PARCEL LINE
  - PHASE LINE
  - ROAD ROW LINE
  - RAILROAD ROW LINE
  - (01-20-1.03) PARCEL ID NUMBER
  - 345 LOT NUMBER
  - BELL PLAT 1 PLAT NAME
  - 01004 TAX MAP NUMBER

**SMITH TOWNSHIP**  
**Index Map**

