

**MAHONING COUNTY
OHIO
SMITH TOWNSHIP
Section 24**

**TAX MAP
16067**



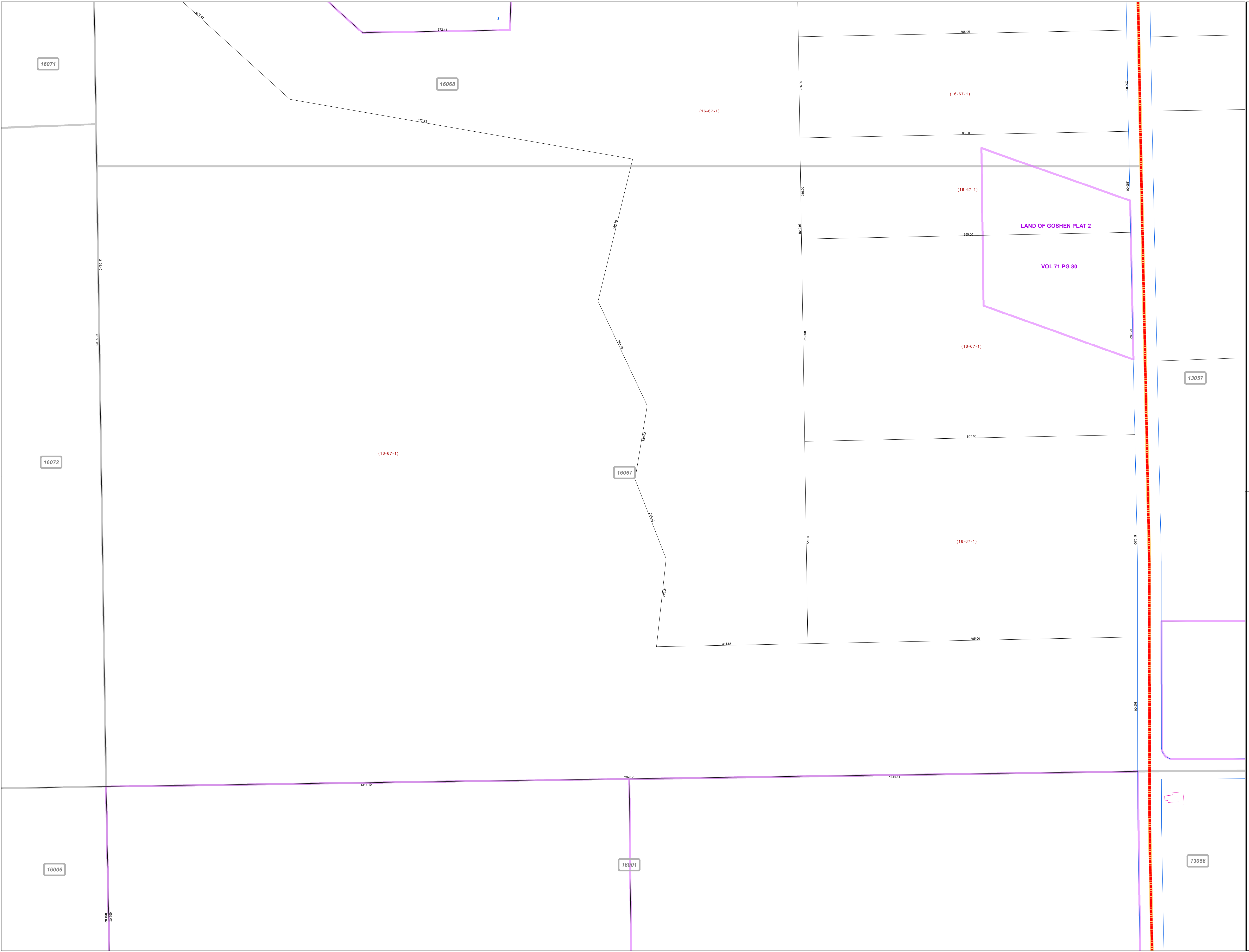
Print Date 12/31/2019

LEGEND

- COUNTY LINE
- - - TOWNSHIP LINE
- · - · - CITY LINE
- - - VILLAGE LINE
- ▬ PLAT OUTLINE
- ▬ PARCEL LINE
- - - OLD PARCEL LINE
- · - · - PHASE LINE
- ▬ ROAD ROW LINE
- ▬ RAILROAD ROW LINE
- (01-20-1.03) PARCEL ID NUMBER
- 345 LOT NUMBER
- BELL PLAT 1 PLAT NAME
- 01004 TAX MAP NUMBER

**SMITH TOWNSHIP
Index Map**

16071	16068	13058
16072	16067	13057
16006	16001	13056



16071

16068

(16-67-1)

(16-67-1)

(16-67-1)

LAND OF GOSHEN PLAT 2

VOL 71 PG 80

(16-67-1)

(16-67-1)

(16-67-1)

13057

16072

(16-67-1)

16067

16006

16001

13056