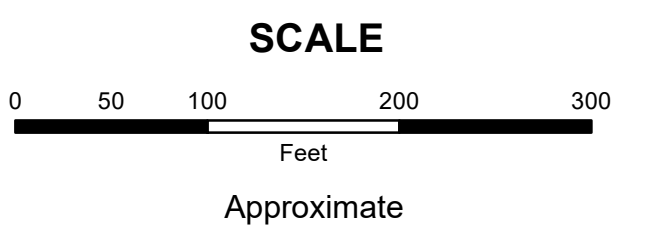


MAHONING COUNTY
OHIO
SMITH TOWNSHIP
 Section 25

TAX MAP
16006



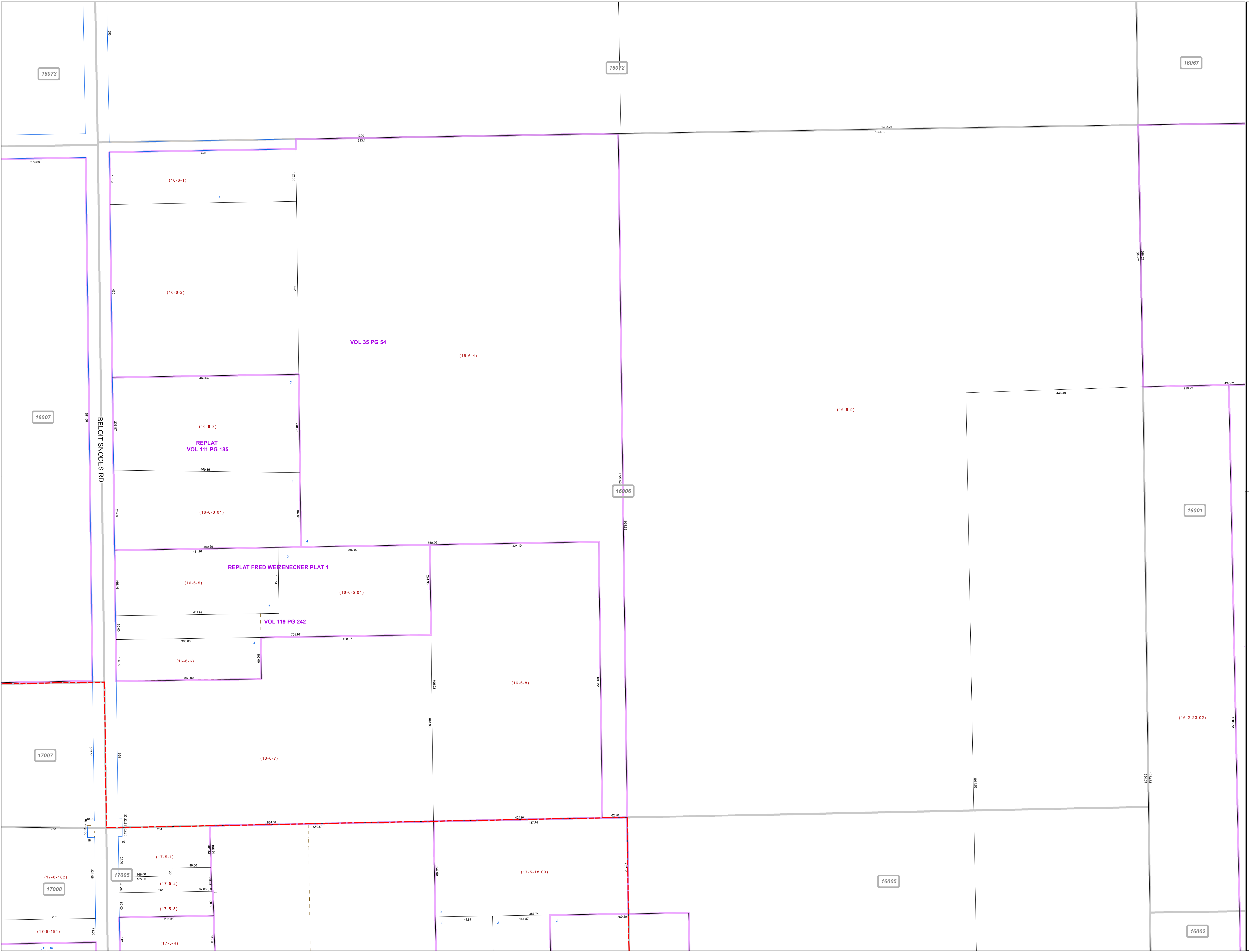
Print Date 12/31/2019

LEGEND

- COUNTY LINE
- TOWNSHIP LINE
- CITY LINE
- VILLAGE LINE
- PLAT OUTLINE
- PARCEL LINE
- OLD PARCEL LINE
- PHASE LINE
- ROAD ROW LINE
- RAILROAD ROW LINE
- (01-20-1.03) PARCEL ID NUMBER
- 345 LOT NUMBER
- BELL PLAT 1 PLAT NAME
- 01004 TAX MAP NUMBER

SMITH TOWNSHIP
Index Map

		16068
16073	16072	16067
16007	16006	16001
17007		
17008	17005	16002



16073

16072

16067

16007

16006

16001

17007

16005

16002

17008

17005

17

16