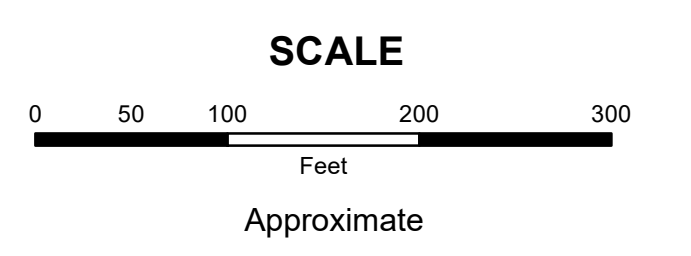
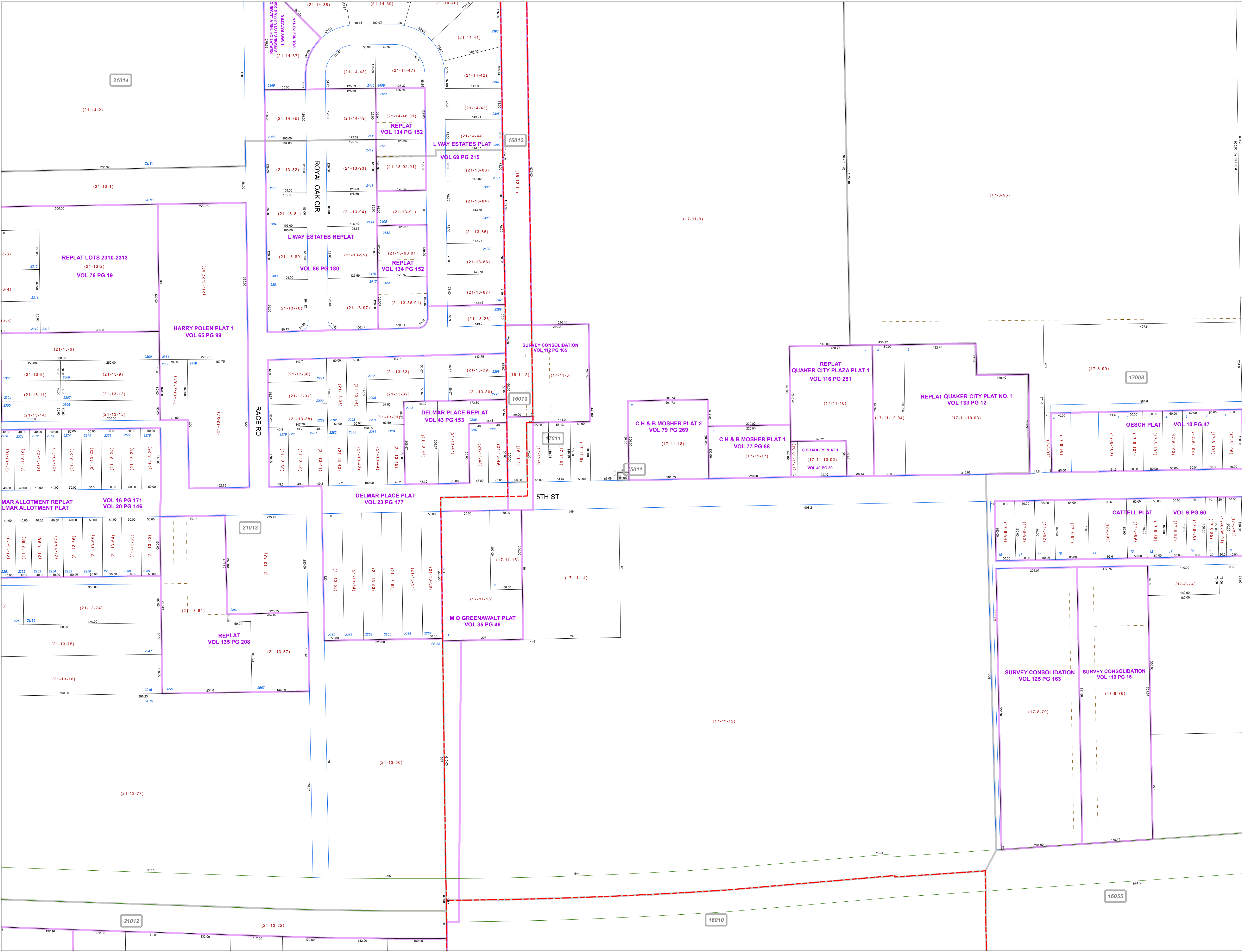


MAHONING COUNTY
OHIO
SMITH TOWNSHIP
 Section 26
TAX MAP
15011



Print Date 12/31/2019



- LEGEND**
- COUNTY LINE
 - TOWNSHIP LINE
 - CITY LINE
 - VILLAGE LINE
 - PLAT OUTLINE
 - PARCEL LINE
 - OLD PARCEL LINE
 - PHASE LINE
 - ROAD ROW LINE
 - RAILROAD ROW LINE
 - PARCEL ID NUMBER
 - LOT NUMBER
 - PLAT NAME
 - TAX MAP NUMBER

