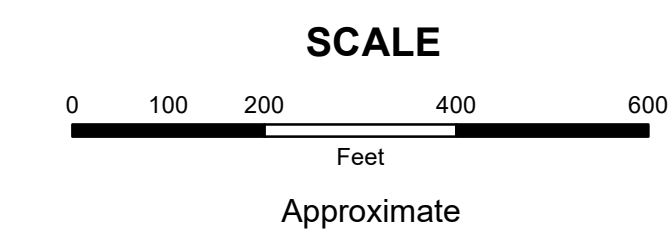


MAHONING COUNTY
OHIO
GOSHEN TOWNSHIP
Section 34 North Half

TAX MAP
13027



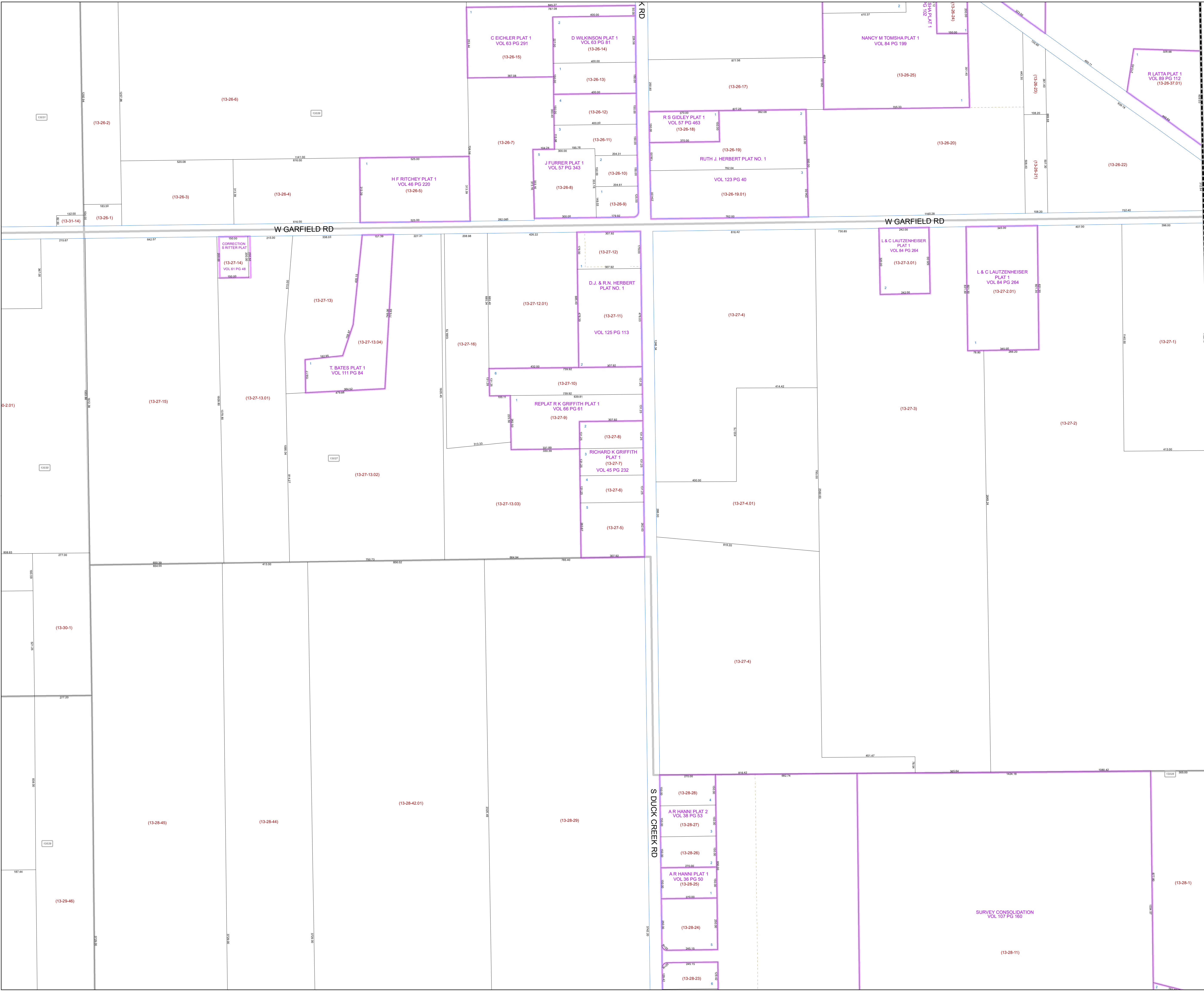
Print Date 12/31/2019

LEGEND

- COUNTY LINE
- TOWNSHIP LINE
- CITY LINE
- VILLAGE LINE
- PLAT OUTLINE
- PARCEL LINE
- OLD PARCEL LINE
- PHASE LINE
- ROAD ROW LINE
- RAILROAD ROW LINE
- (01-20-1.03) PARCEL ID NUMBER
- 345 LOT NUMBER
- BELL PLAT 1 PLAT NAME
- 01004 TAX MAP NUMBER

GOSHEN TOWNSHIP
Index Map

13032	13025	
13031	13026	
13030	13027	
13029	13028	



COLUMBIANA COUNTY