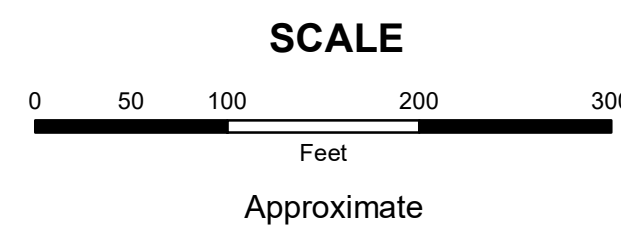


MAHONING COUNTY
OHIO
MILTON TOWNSHIP
Great Lot 11 NS

TAX MAP
51034

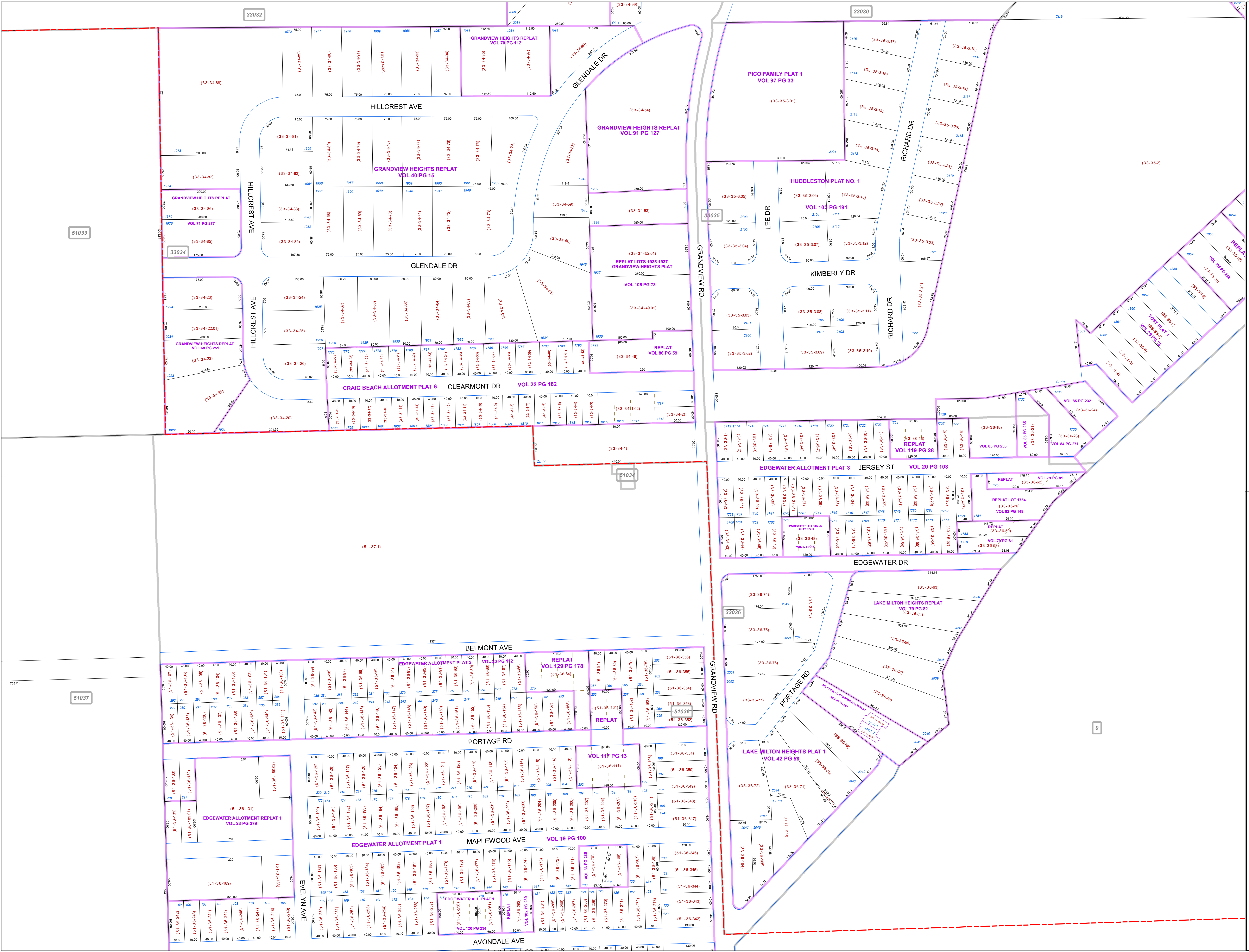
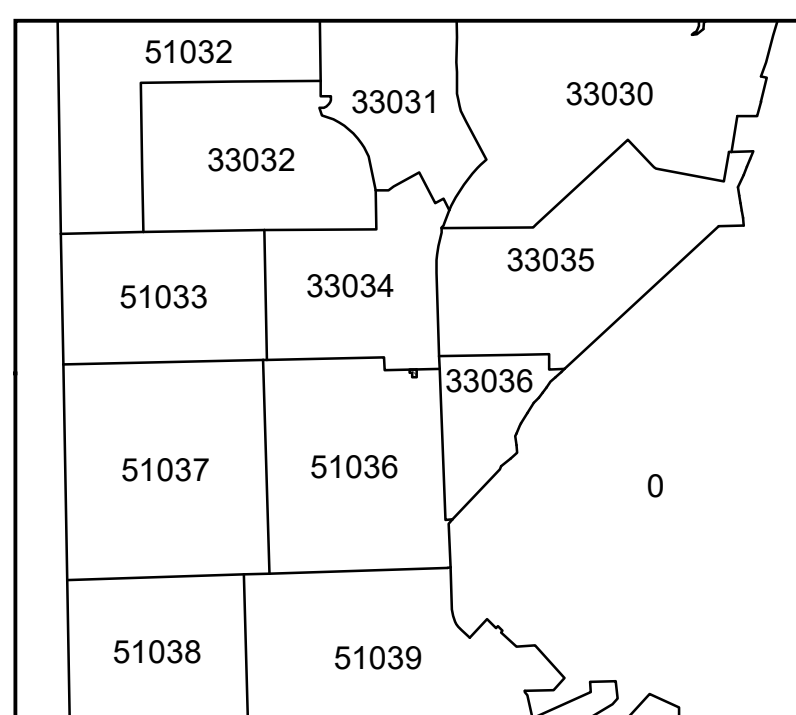


Print Date 12/29/2017

LEGEND

- COUNTY LINE
- TOWNSHIP LINE
- CITY LINE
- VILLAGE LINE
- PLAT OUTLINE
- PARCEL LINE
- OLD PARCEL LINE
- PHASE LINE
- ROAD ROW LINE
- RAILROAD ROW LINE
- (01-20-1.03) PARCEL ID NUMBER
- 345 LOT NUMBER
- BELL PLAT 1 PLAT NAME
- 01004 TAX MAP NUMBER

MILTON TOWNSHIP
Index Map



51033

51037

51034

0