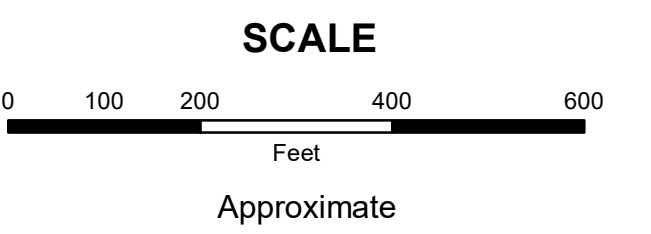


MAHONING COUNTY
OHIO
JACKSON TOWNSHIP
Lots 14, 15, 18 Section 11

TAX MAP
50045



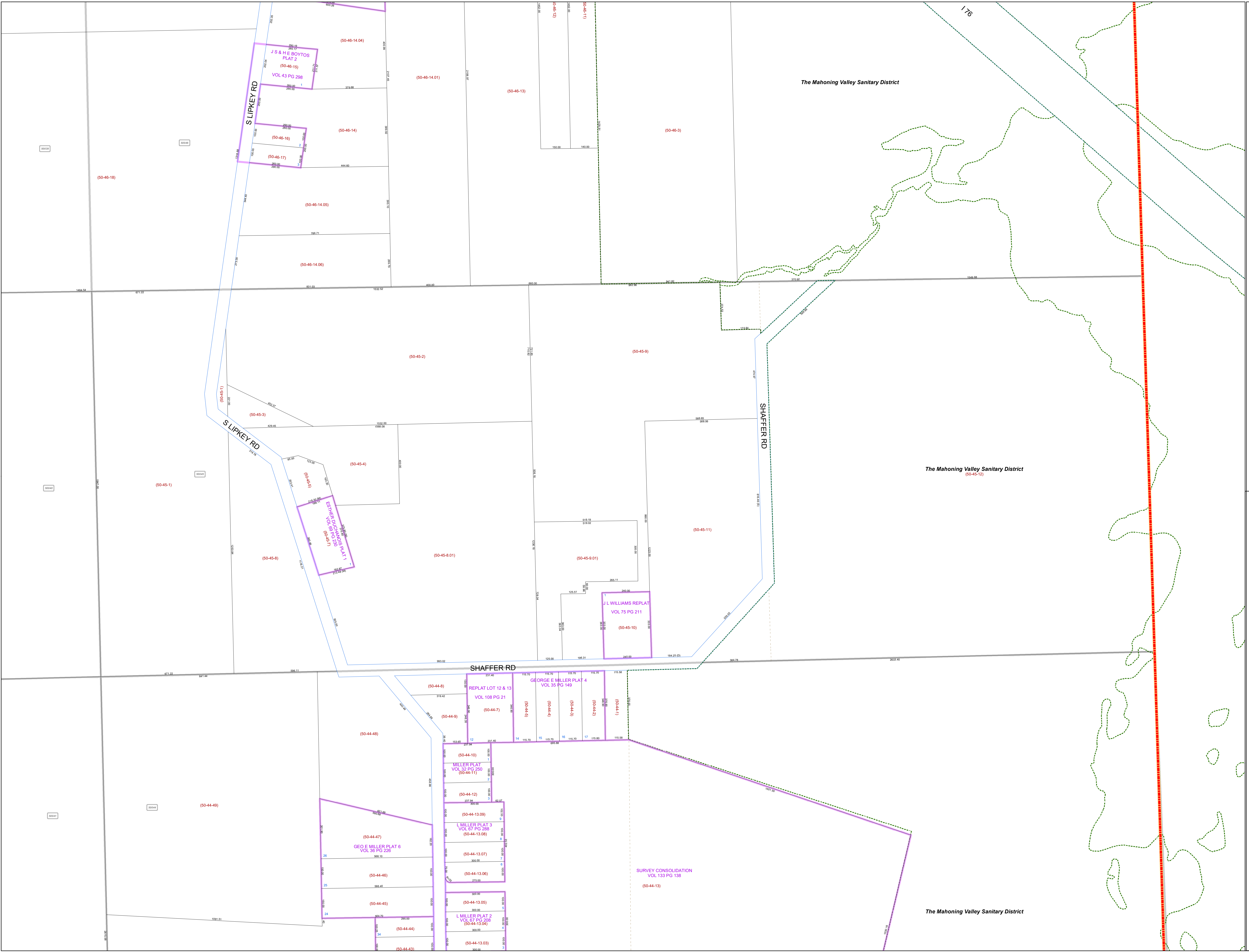
Print Date 12/29/2017

LEGEND

- COUNTY LINE
- TOWNSHIP LINE
- CITY LINE
- VILLAGE LINE
- PLAT OUTLINE
- PARCEL LINE
- OLD PARCEL LINE
- PHASE LINE
- ROAD ROW LINE
- RAILROAD ROW LINE
- (01-20-1.03) PARCEL ID NUMBER
- 345 LOT NUMBER
- BELL PLAT 1 PLAT NAME
- 01004 TAX MAP NUMBER

JACKSON TOWNSHIP
Index Map

50038	50047	48103
50039	50046	
50040	50045	
50041	50044	
50042	50043	



The Mahoning Valley Sanitary District

The Mahoning Valley Sanitary District

The Mahoning Valley Sanitary District

J S & H E BOYTOS
 PLAT 2
 (50-46-15)
 VOL 43 PG 298

ESTHER O'NEILL
 VOL 6 PG 290
 (50-45-7)

J L WILLIAMS REPLAT
 VOL 75 PG 211
 (50-45-10)

REPLAT LOT 12 & 13
 VOL 108 PG 21
 (50-44-7)

GEORGE E MILLER PLAT 4
 VOL 35 PG 149
 (50-44-1)

MILLER PLAT
 VOL 32 PG 250
 (50-44-11)

L MILLER PLAT 3
 VOL 67 PG 289
 (50-44-13.08)

L MILLER PLAT 2
 VOL 67 PG 288
 (50-44-13.04)

L MILLER PLAT 1
 VOL 67 PG 287
 (50-44-13.02)

SURVEY CONSOLIDATION
 VOL 133 PG 138
 (50-44-13)

GEO E MILLER PLAT 6
 VOL 36 PG 226
 (50-44-47)