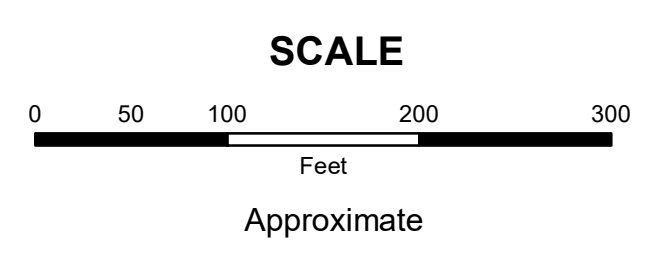


MAHONING COUNTY
OHIO
SMITH TOWNSHIP
Section 11
TAX MAP
16145

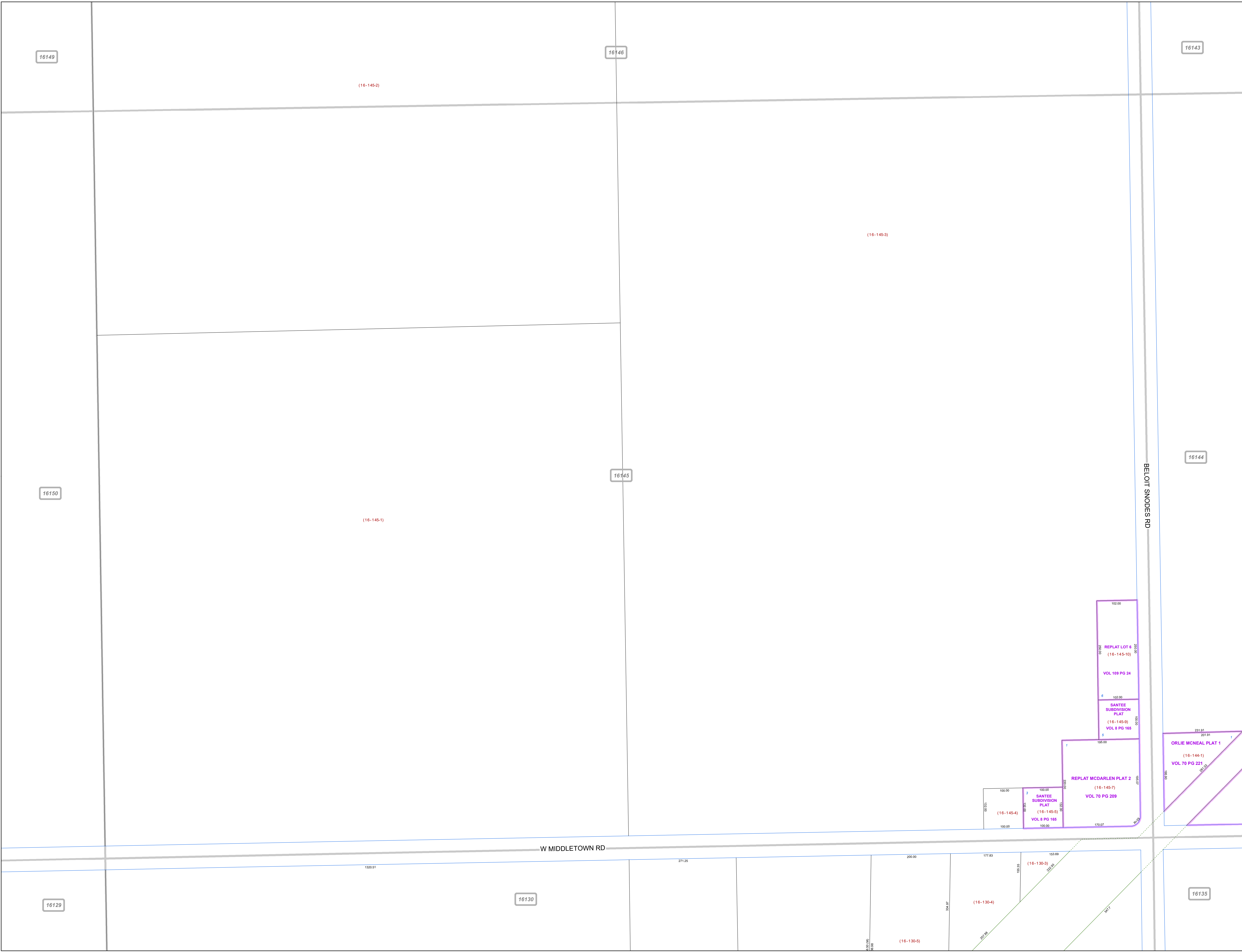


Print Date 12/29/2017

- LEGEND**
- COUNTY LINE
 - TOWNSHIP LINE
 - CITY LINE
 - VILLAGE LINE
 - PLAT OUTLINE
 - PARCEL LINE
 - OLD PARCEL LINE
 - PHASE LINE
 - ROAD ROW LINE
 - RAILROAD ROW LINE
 - (01-20-1.03) PARCEL ID NUMBER
 - 345 LOT NUMBER
 - BELL PLAT 1 PLAT NAME
 - 01004 TAX MAP NUMBER

SMITH TOWNSHIP
Index Map

16149	16146	16143
16150	16145	16144
16129	16130	16135



16149

16146

16143

16150

16145

16144

16129

16130

16135