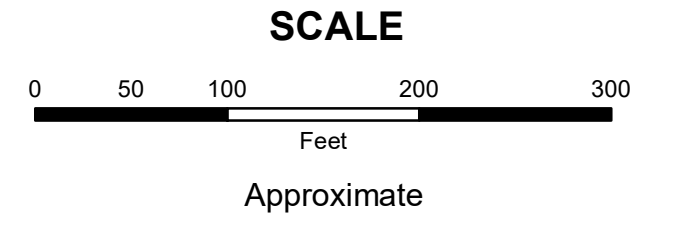


**MAHONING COUNTY
OHIO
NEW MIDDLETOWN VILLAGE**

**TAX MAP
03007**

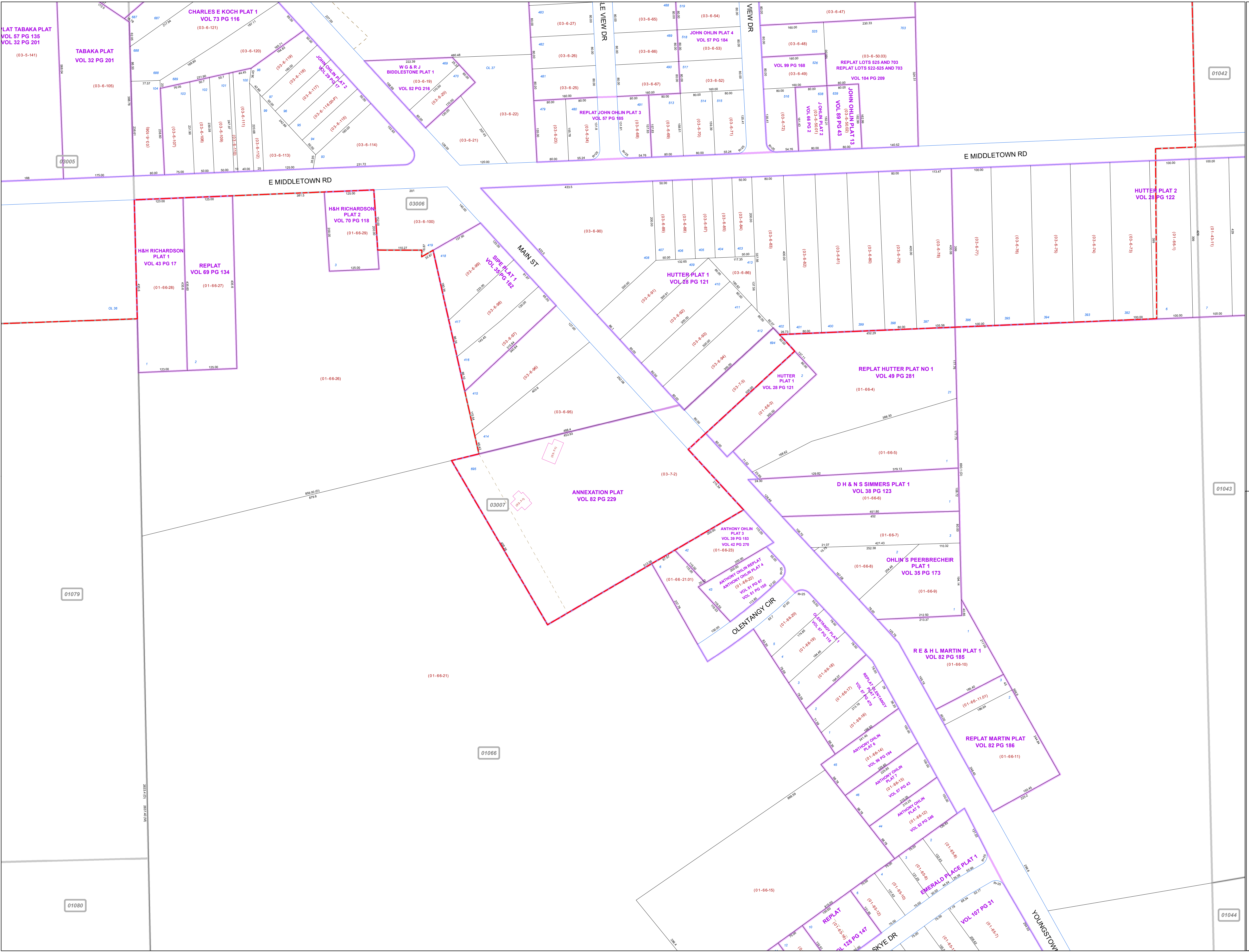
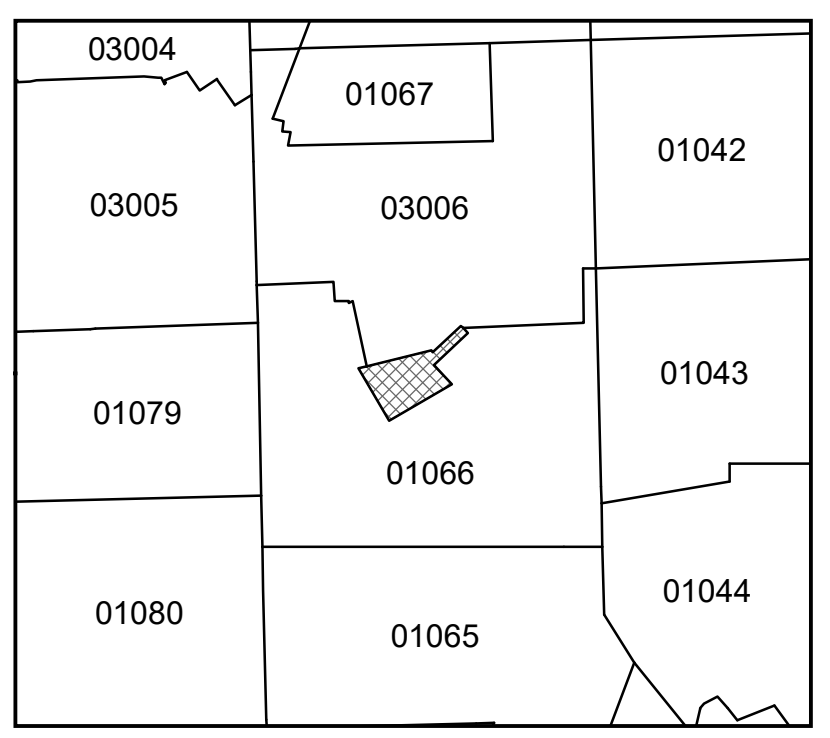


Print Date 12/29/2017

LEGEND

- COUNTY LINE
- TOWNSHIP LINE
- CITY LINE
- VILLAGE LINE
- PLAT OUTLINE
- PARCEL LINE
- OLD PARCEL LINE
- PHASE LINE
- ROAD ROW LINE
- RAILROAD ROW LINE
- (01-20-1.03) PARCEL ID NUMBER
- 345 LOT NUMBER
- BELL PLAT 1 PLAT NAME
- 01004 TAX MAP NUMBER

**NEW MIDDLETOWN VILLAGE
Index Map**



LAT TABAKA PLAT
VOL 57 PG 135
VOL 32 PG 201

TABAKA PLAT
VOL 32 PG 201

CHARLES E KOCH PLAT 1
VOL 73 PG 116

W G & R J
BIDDLESTONE PLAT 1
VOL 52 PG 216

JOHN OHLIN PLAT 4
VOL 57 PG 184

REPLAT LOTS 525 AND 703
REPLAT LOTS 522-525 AND 703
VOL 104 PG 209

H&H RICHARDSON
PLAT 2
VOL 70 PG 118

H&H RICHARDSON
PLAT 1
VOL 43 PG 17

REPLAT
VOL 69 PG 134

HUTTER PLAT 1
VOL 28 PG 121

HUTTER PLAT 2
VOL 28 PG 122

REPLAT HUTTER PLAT NO 1
VOL 49 PG 281

HUTTER PLAT 2
VOL 28 PG 121

ANNEXATION PLAT
VOL 82 PG 229

D H & N S SIMMERS PLAT 1
VOL 38 PG 123

OHLIN'S PEERBRECHER
PLAT 1
VOL 35 PG 173

R E & H L MARTIN PLAT 1
VOL 82 PG 185

REPLAT MARTIN PLAT
VOL 82 PG 186

ANTHONY OHLIN
PLAT 3
VOL 39 PG 183

ANTHONY OHLIN REPLAT
VOL 39 PG 270

ANTHONY OHLIN PLAT 2
VOL 39 PG 187

ANTHONY OHLIN
PLAT 4
VOL 51 PG 198

ANTHONY OHLIN
PLAT 5
VOL 59 PG 194

ANTHONY OHLIN
PLAT 6
VOL 59 PG 194

ANTHONY OHLIN
PLAT 7
VOL 57 PG 185

ANTHONY OHLIN
PLAT 8
VOL 52 PG 208

EMERALD PLACE PLAT 1
VOL 107 PG 31

REPLAT
VOL 125 PG 147

03005

03006

03007

01079

01080

01066

01042

01043

01044