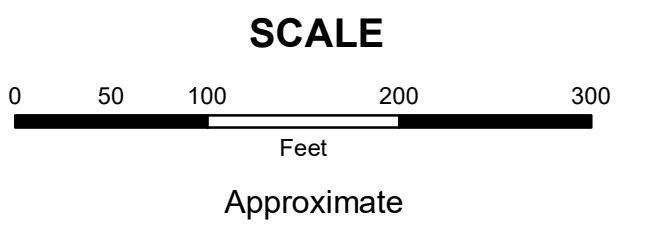


**MAHONING COUNTY  
OHIO  
SPRINGFIELD TOWNSHIP  
Section 16**

**TAX MAP  
01138**



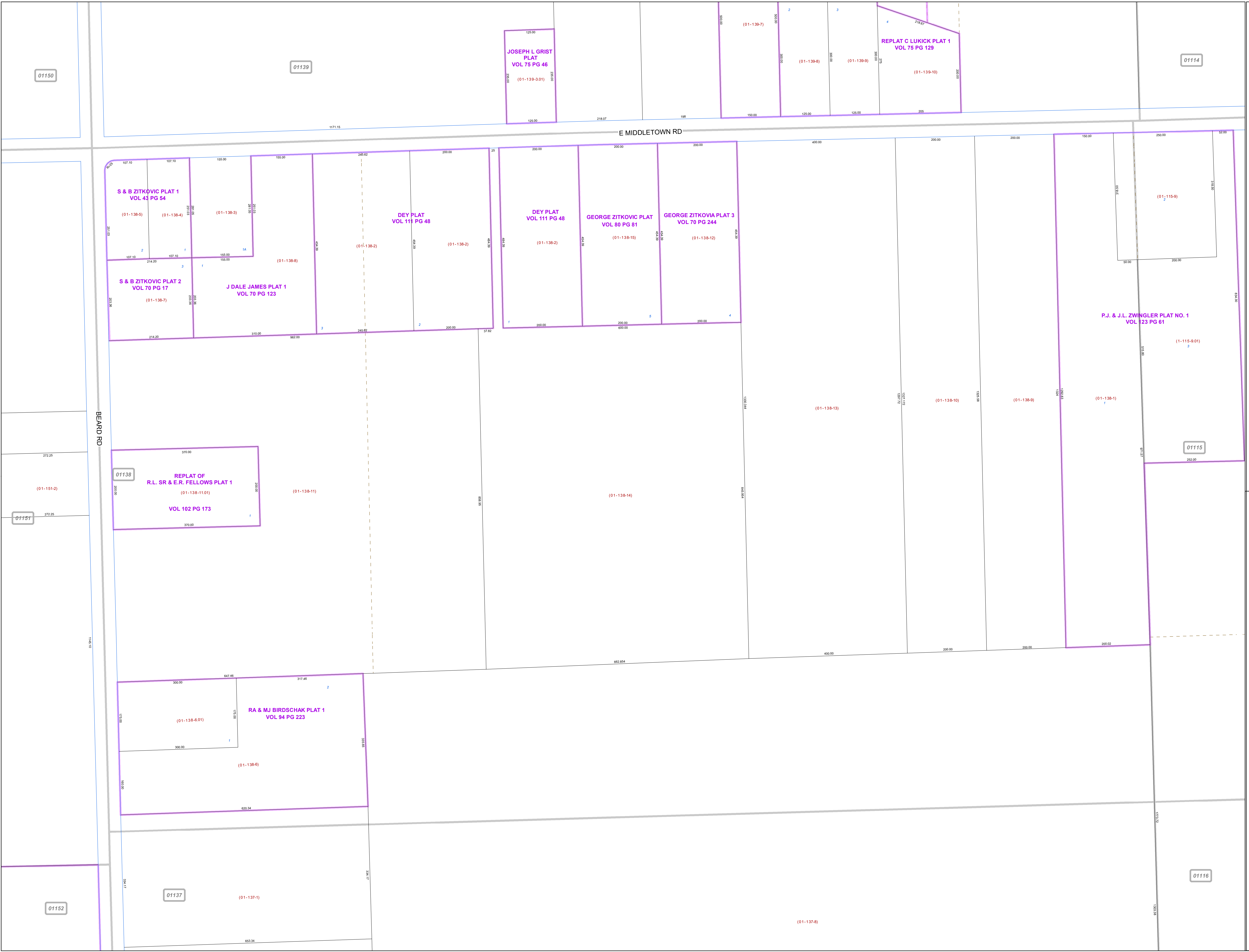
Print Date 12/29/2017

**LEGEND**

- COUNTY LINE
- TOWNSHIP LINE
- CITY LINE
- VILLAGE LINE
- PLAT OUTLINE
- PARCEL LINE
- OLD PARCEL LINE
- PHASE LINE
- ROAD ROW LINE
- RAILROAD ROW LINE
- (01-20-1.03) PARCEL ID NUMBER
- 345 LOT NUMBER
- BELL PLAT 1 PLAT NAME
- 01004 TAX MAP NUMBER

**SPRINGFIELD TOWNSHIP  
Index Map**

01150	01139	01114
01151	01138	01115
01152	01137	01116



01150

01139

JOSEPH L GRIST  
PLAT  
VOL 75 PG 46  
(01-139-3.01)

REPLAT C LUKICK PLAT 1  
VOL 75 PG 129

01114

E MIDDLETOWN RD

S & B ZITKOVIC PLAT 1  
VOL 43 PG 54

DEY PLAT  
VOL 111 PG 48

DEY PLAT  
VOL 111 PG 48

GEORGE ZITKOVIC PLAT  
VOL 89 PG 81

GEORGE ZITKOVIA PLAT 3  
VOL 70 PG 244

P.J. & J.L. ZWINGER PLAT NO. 1  
VOL 123 PG 61

S & B ZITKOVIC PLAT 2  
VOL 70 PG 17

J DALE JAMES PLAT 1  
VOL 70 PG 123

REPLAT OF  
R.L. SR & E.R. FELLOWS PLAT 1  
VOL 102 PG 173

RA & MJ BIRDSCHAK PLAT 1  
VOL 94 PG 223

01151

01115

01137

01116

01152

BEARD RD