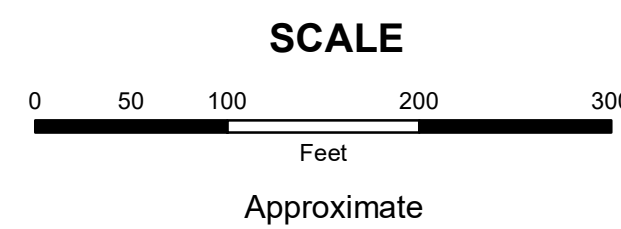


MAHONING COUNTY
OHIO
SPRINGFIELD TOWNSHIP
 Section 12

TAX MAP
01033



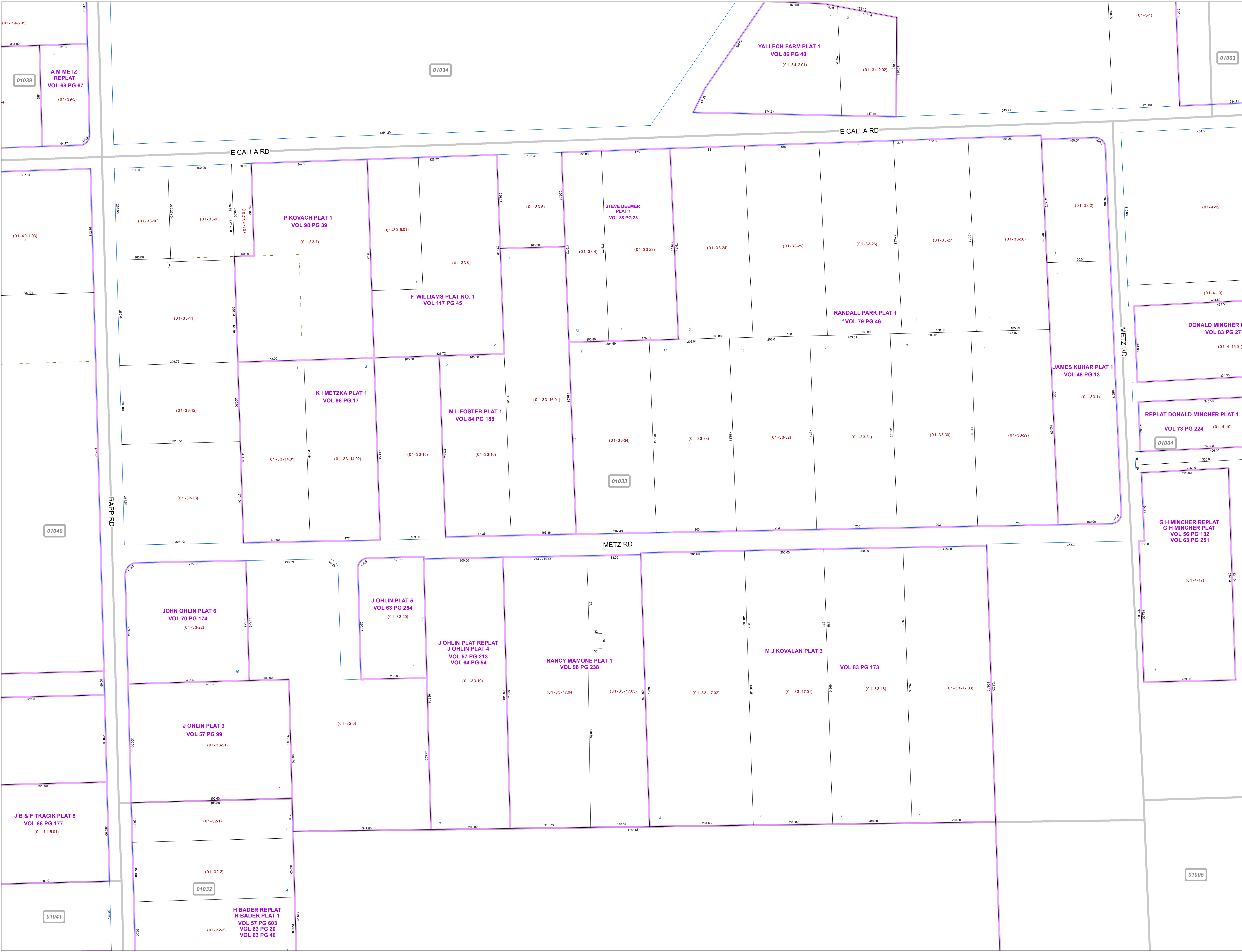
Print Date 12/29/2017

LEGEND

- COUNTY LINE
- TOWNSHIP LINE
- CITY LINE
- VILLAGE LINE
- PLAT OUTLINE
- PARCEL LINE
- OLD PARCEL LINE
- PHASE LINE
- ROAD ROW LINE
- RAILROAD ROW LINE
- (01-20-1.03) PARCEL ID NUMBER
- 345 LOT NUMBER
- BELL PLAT 1 PLAT NAME
- 01004 TAX MAP NUMBER

SPRINGFIELD TOWNSHIP
Index Map

01039	01034	01003
01040	01033	01004
01041	01032	01005



01034

01003

01039

A M METZ
 REPLAT
 VOL 68 PG 67
 (01-39-5)

YALLECH FARM PLAT 1
 VOL 86 PG 40
 (01-34-2.01)

(01-34-2.02)

E CALLA RD

E CALLA RD

P KOVACH PLAT 1
 VOL 98 PG 39
 (01-33-7)

STEVE DEEMER
 PLAT 1
 VOL 88 PG 23
 (01-33-23)

F. WILLIAMS PLAT NO. 1
 VOL 117 PG 45
 (01-33-6.01)

RANDALL PARK PLAT 1
 VOL 79 PG 46
 (01-33-26)

DONALD MINCHER P
 VOL 83 PG 27
 (01-4-12)

K I METZKA PLAT 1
 VOL 98 PG 17
 (01-33-12)

M L FOSTER PLAT 1
 VOL 84 PG 188
 (01-33-16.01)

JAMES KUHAR PLAT 1
 VOL 48 PG 13
 (01-33-1)

REPLAT DONALD MINCHER PLAT 1
 VOL 73 PG 224
 (01-4-19)

01033

G H MINCHER REPLAT
 G H MINCHER PLAT
 VOL 56 PG 132
 VOL 63 PG 251
 (01-4-17)

METZ RD

JOHN OHLIN PLAT 6
 VOL 70 PG 174
 (01-33-22)

J OHLIN PLAT 5
 VOL 63 PG 254
 (01-33-20)

J OHLIN PLAT REPLAT
 J OHLIN PLAT 4
 VOL 57 PG 213
 VOL 64 PG 54
 (01-33-19)

NANCY MAMONE PLAT 1
 VOL 98 PG 238
 (01-33-17.04)

M J KOVALAN PLAT 3
 VOL 83 PG 173
 (01-33-17.02)

J OHLIN PLAT 3
 VOL 57 PG 99
 (01-33-21)

(01-32-5)

J B & F TKACIK PLAT 5
 VOL 66 PG 177
 (01-41-5.01)

01032

H BADER REPLAT
 H BADER PLAT 1
 VOL 57 PG 603
 VOL 63 PG 50
 VOL 63 PG 40
 (01-32-3)

01005

01041