

**MAHONING COUNTY
OHIO
MILTON TOWNSHIP**

**TAX MAP
51091**

SCALE
1 inch = 100 feet
Approximate



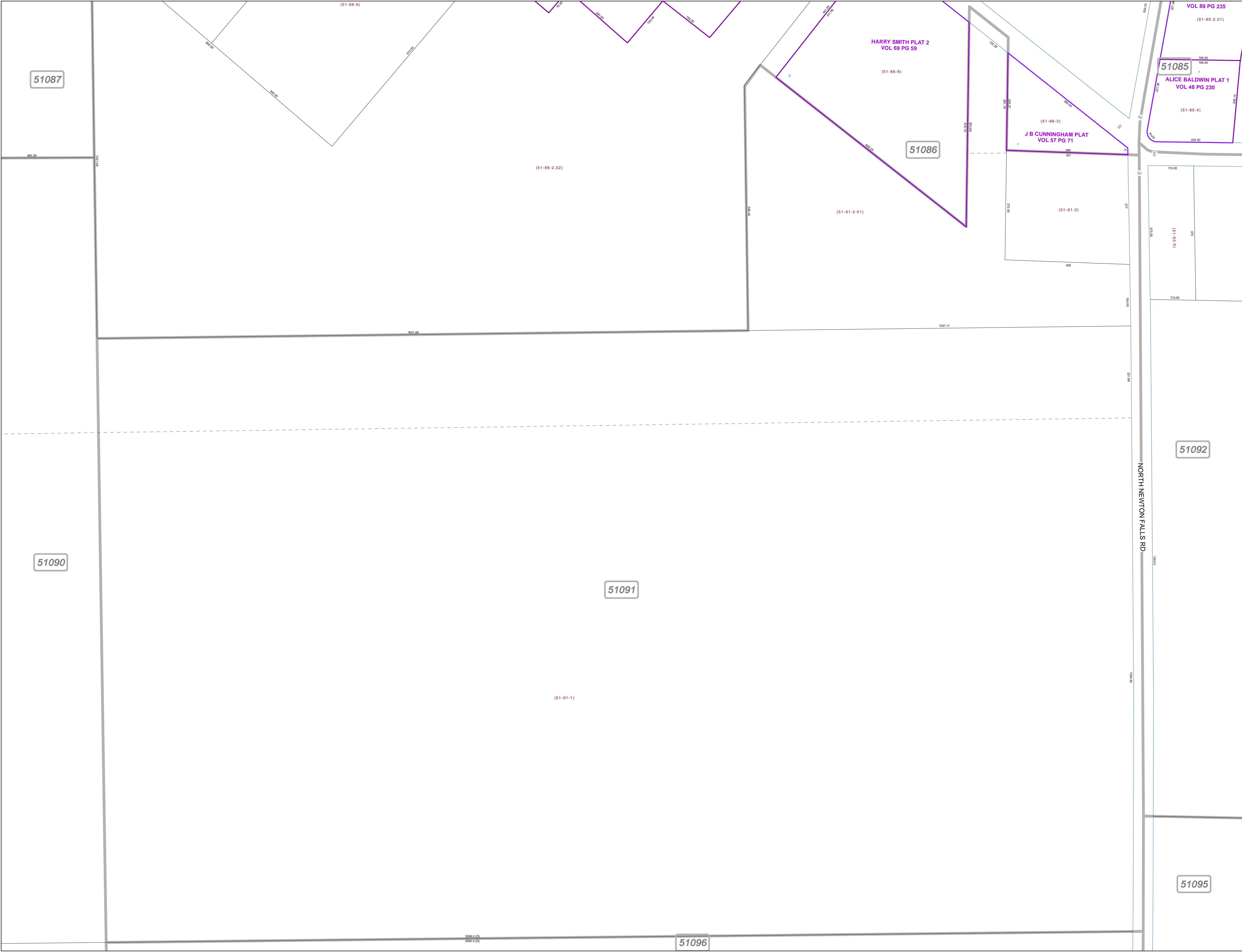
Print Date Dec 31, 2011

LEGEND

- COUNTY LINE
- TOWNSHIP LINE
- CITY LINE
- VILLAGE LINE
- PLAT OUTLINE
- PARCEL LINE
- OLD PARCEL LINE
- PHASE LINE
- ROAD ROW LINE
- RAILROAD ROW LINE
- (01-20-1.03) PARCEL ID NUMBER
- 345 LOT NUMBER
- BELL PLAT 1 PLAT NAME
- 01004 TAX MAP NUMBER

**MILTON TOWNSHIP
Index Map**

51080	51081	51082
51087	51086	51085
51090	51091	51092
51097	51096	51095
51100	51101	51102



51087

51086

51085

51092

51090

51091

51095

51096

HARRY SMITH PLAT 2
VOL 69 PG 59

VOL 89 PG 235
ALICE BALDWIN PLAT 1
VOL 48 PG 230

J B CUNNINGHAM PLAT
VOL 57 PG 71

(51-86-2.02)

(51-91-2.01)

(51-91-3)

(51-85-4)

(51-92-8)

(51-91-1)

NORTH NEWTON FALLS RD

3389.0 (D)
3392.4 (D)