

**MAHONING COUNTY
OHIO
COITSVILLE TOWNSHIP**

**TAX MAP
42057**

SCALE
1 inch = 100 feet
Approximate

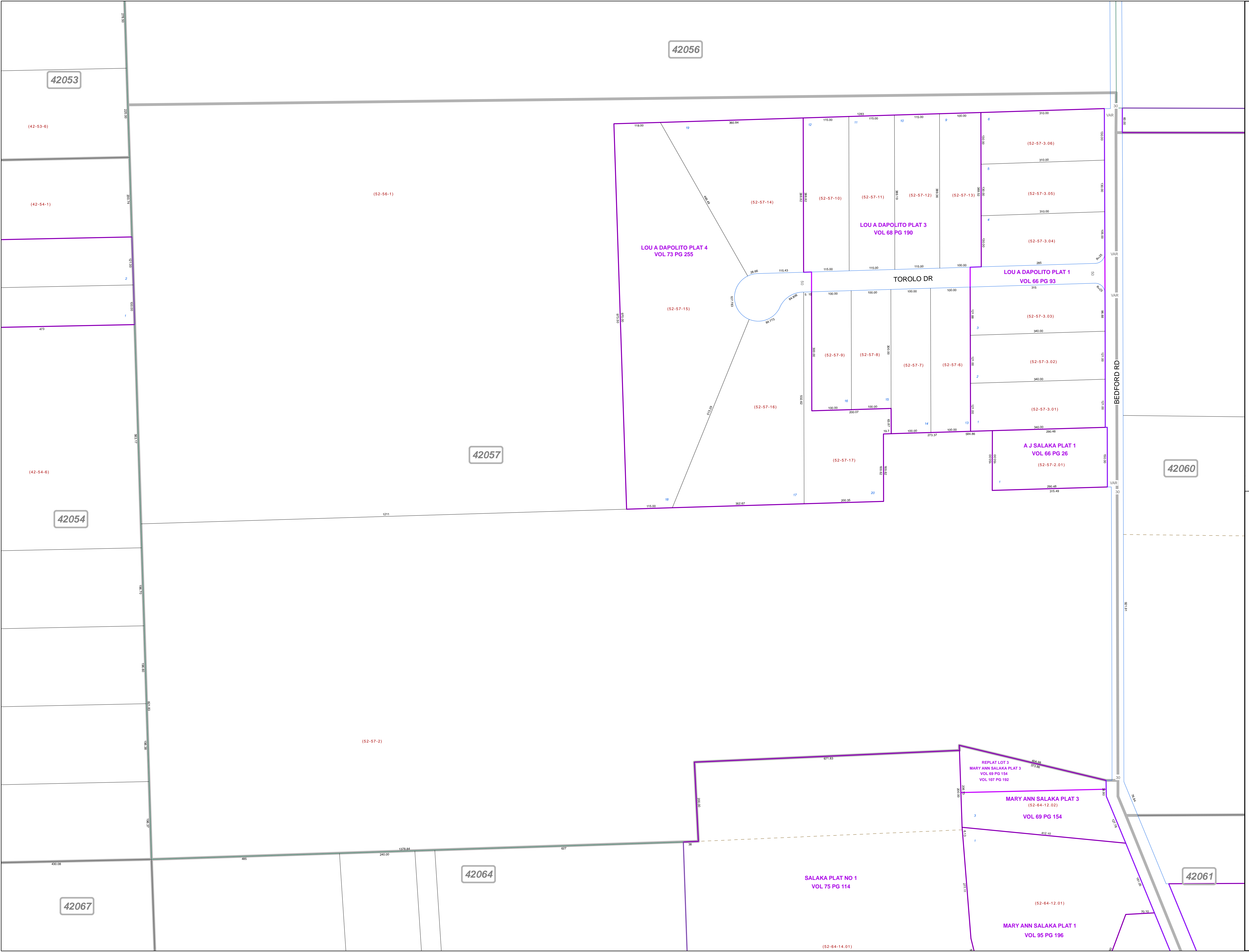
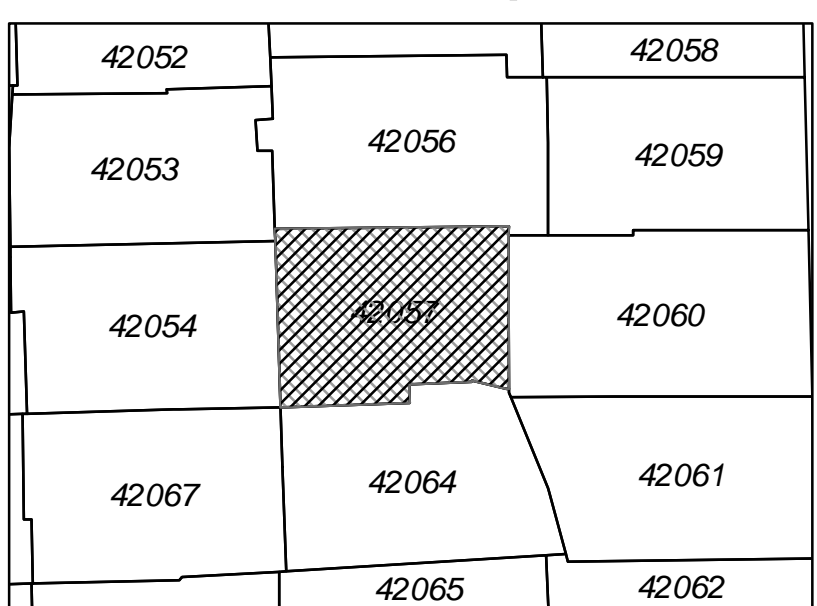


Print Date Dec 31, 2011

LEGEND

- COUNTY LINE
- TOWNSHIP LINE
- CITY LINE
- VILLAGE LINE
- PLAT OUTLINE
- PARCEL LINE
- OLD PARCEL LINE
- PHASE LINE
- ROAD ROW LINE
- RAILROAD ROW LINE
- (01-20-1.03) PARCEL ID NUMBER
- 345 LOT NUMBER
- BELL PLAT 1 PLAT NAME
- 01004 TAX MAP NUMBER

**COITSVILLE TOWNSHIP
Index Map**



42053

42056

42057

42060

42054

42064

42061

42067

(42-53-6)

(42-54-1)

(42-54-6)

(52-56-1)

LOU A DAPOLITO PLAT 4
VOL 73 PG 255

LOU A DAPOLITO PLAT 3
VOL 68 PG 190

LOU A DAPOLITO PLAT 1
VOL 66 PG 93

A J SALAKA PLAT 1
VOL 66 PG 26

SALAKA PLAT NO 1
VOL 75 PG 114

MARY ANN SALAKA PLAT 3
VOL 69 PG 154

MARY ANN SALAKA PLAT 1
VOL 95 PG 196

REPLAT LOT 3
MARY ANN SALAKA PLAT 3
VOL 69 PG 154
VOL 107 PG 192

(52-57-14)

(52-57-10)

(52-57-11)

(52-57-12)

(52-57-13)

(52-57-3.06)

(52-57-3.05)

(52-57-3.04)

(52-57-15)

(52-57-9)

(52-57-8)

(52-57-7)

(52-57-6)

(52-57-3.03)

(52-57-3.02)

(52-57-3.01)

(52-57-16)

(52-57-17)

(52-57-2.01)

(52-57-2)

(52-64-12.01)

(52-64-14.01)