

**MAHONING COUNTY
OHIO
POLAND TOWNSHIP**

**TAX MAP
35109**

SCALE
1 inch = 120 feet
Approximate



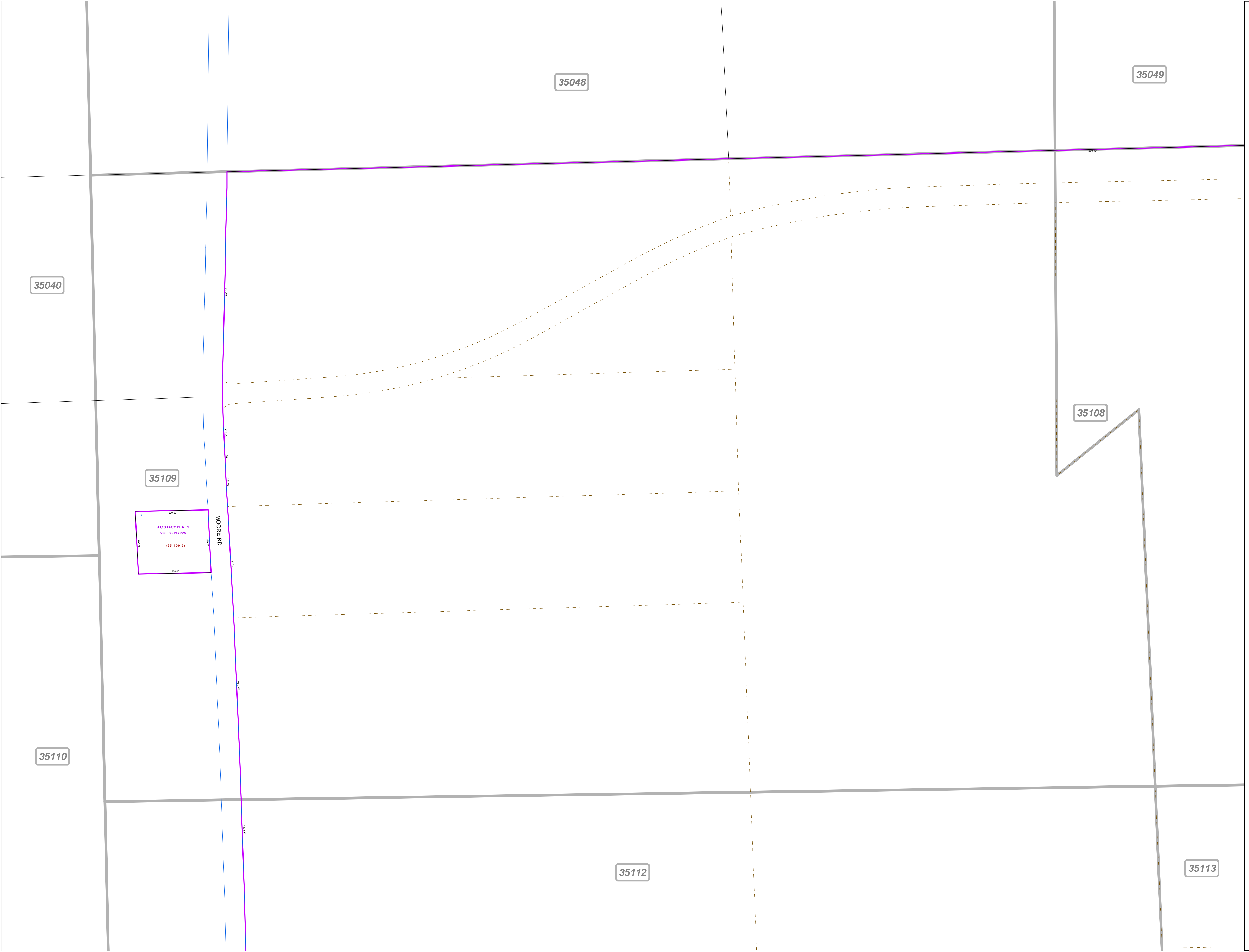
Print Date Dec 31, 2011

LEGEND

- COUNTY LINE
- TOWNSHIP LINE
- CITY LINE
- VILLAGE LINE
- PLAT OUTLINE
- PARCEL LINE
- OLD PARCEL LINE
- PHASE LINE
- ROAD ROW LINE
- RAILROAD ROW LINE
- (01-20-1.03) PARCEL ID NUMBER
- 345 LOT NUMBER
- BELL PLAT 1 PLAT NAME
- 01004 TAX MAP NUMBER

**POLAND TOWNSHIP
Index Map**

35039	35038	35037
	35048	35049
35040	35109	35108
35110		
35111	35112	35113
	35117	35116



J C STACY PLAT 1
VOL 83 PG 225
(35-109-5)

MOORE RD

01-20-1.03
345
01004