

**MAHONING COUNTY  
OHIO  
POLAND TOWNSHIP**

**TAX MAP  
35081**

SCALE  
1 inch = 100 feet  
Approximate

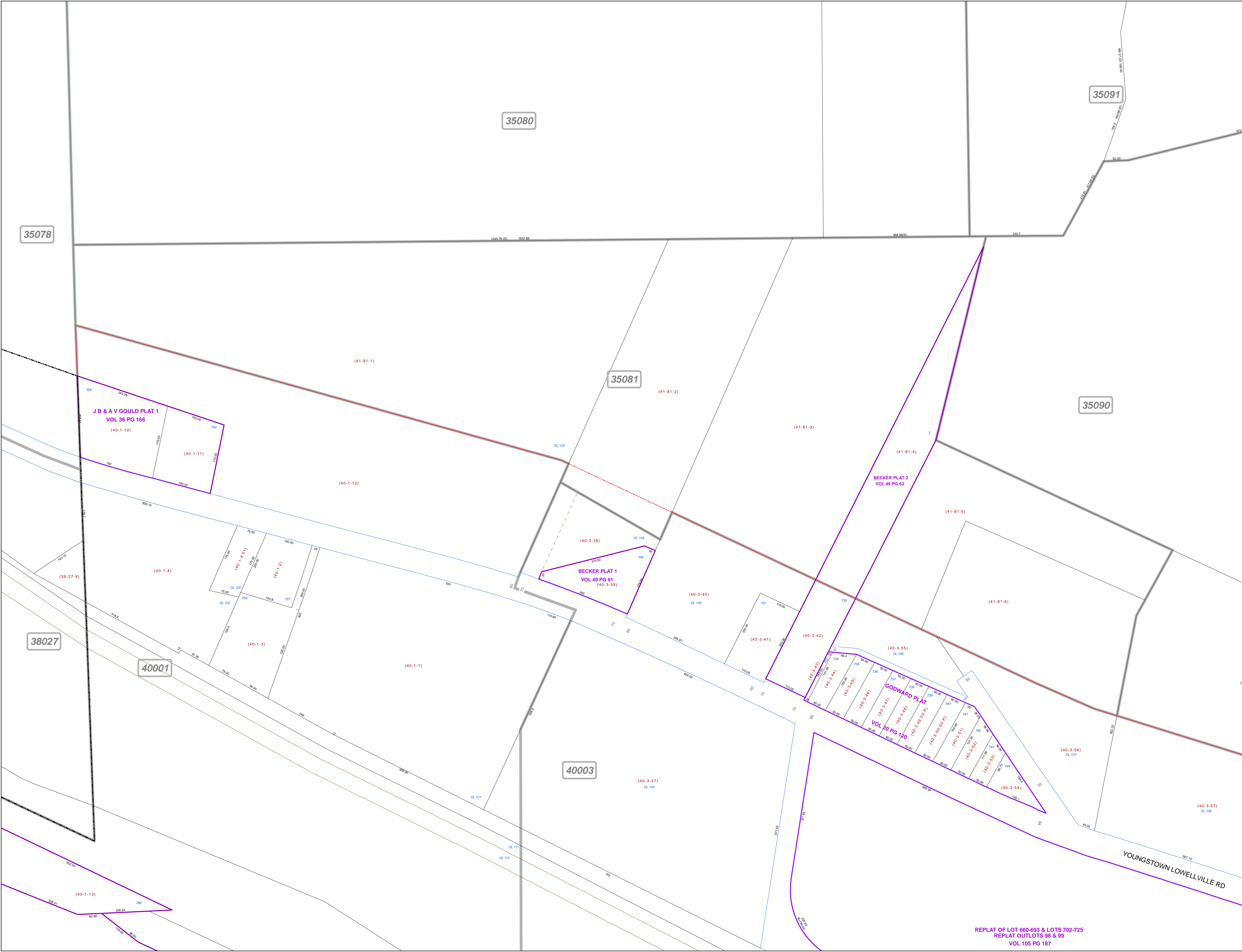


Print Date Dec 31, 2011

**LEGEND**

- COUNTY LINE
- TOWNSHIP LINE
- CITY LINE
- VILLAGE LINE
- PLAT OUTLINE
- PARCEL LINE
- OLD PARCEL LINE
- PHASE LINE
- ROAD ROW LINE
- RAILROAD ROW LINE
- (01-20-1.03) PARCEL ID NUMBER
- 345 LOT NUMBER
- BELL PLAT 1 PLAT NAME
- 01004 TAX MAP NUMBER

**POLAND TOWNSHIP  
Index Map**



REPLAT OF LOT 660-693 & LOTS 702-725  
REPLAT OUTLOTS 98 & 99  
VOL 105 PG 187