

35034

35030

35035

MAHONING COUNTY  
OHIO  
POLAND TOWNSHIP

TAX MAP  
35042

SCALE  
1 inch = 100 feet  
Approximate

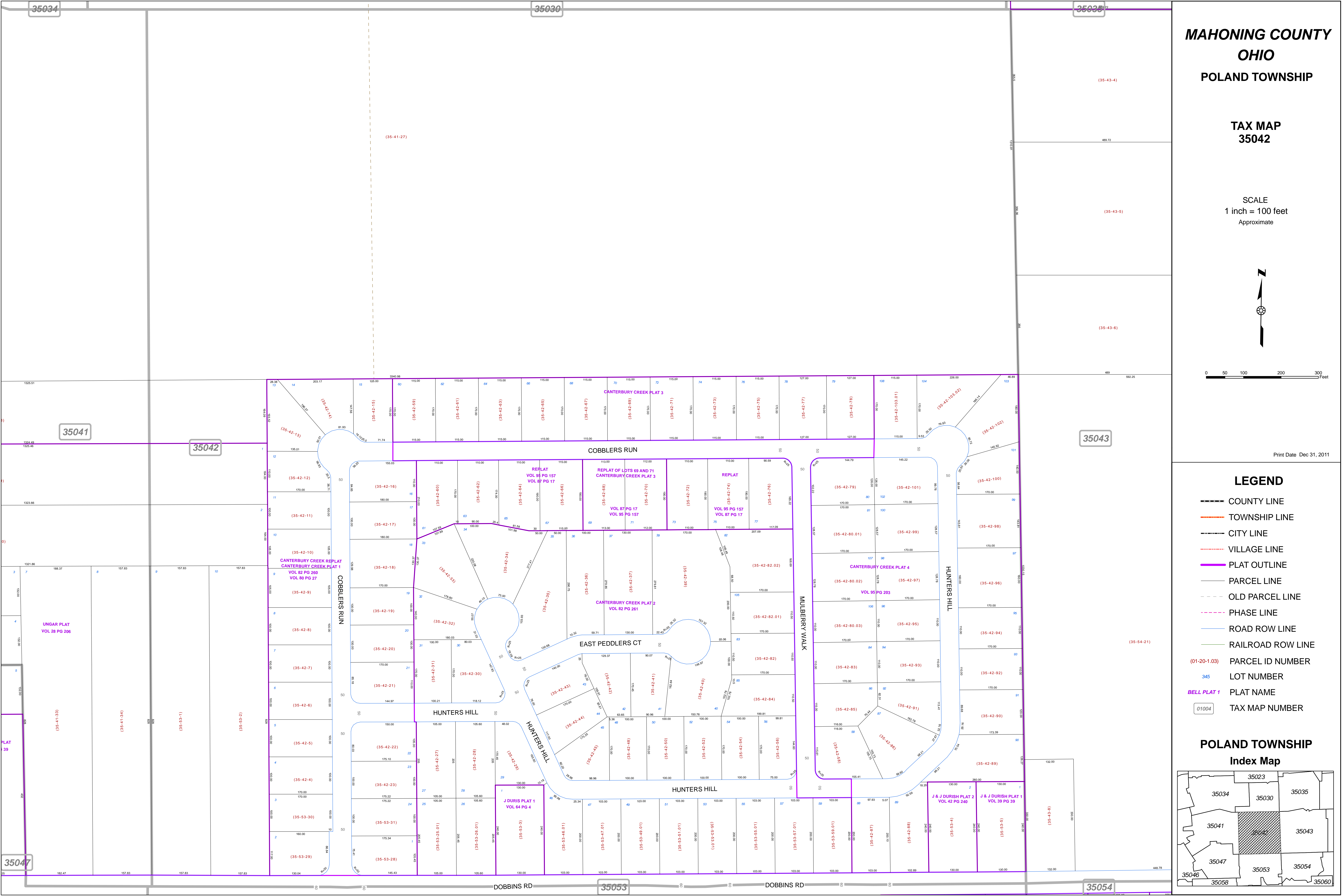
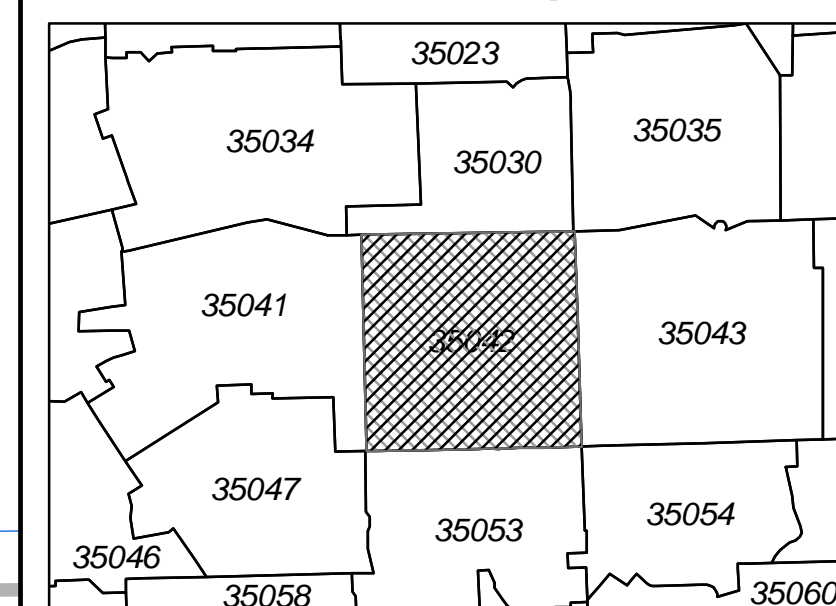


Print Date Dec 31, 2011

LEGEND

- COUNTY LINE
- TOWNSHIP LINE
- CITY LINE
- VILLAGE LINE
- PLAT OUTLINE
- PARCEL LINE
- OLD PARCEL LINE
- PHASE LINE
- ROAD ROW LINE
- RAILROAD ROW LINE
- (01-20-1.03) PARCEL ID NUMBER
- 345 LOT NUMBER
- BELL PLAT 1 PLAT NAME
- 01004 TAX MAP NUMBER

POLAND TOWNSHIP  
Index Map



35041

35042

35043

35047

35053

35054