

**MAHONING COUNTY
OHIO
POLAND TOWNSHIP**

**TAX MAP
35039**

SCALE
1 inch = 100 feet
Approximate

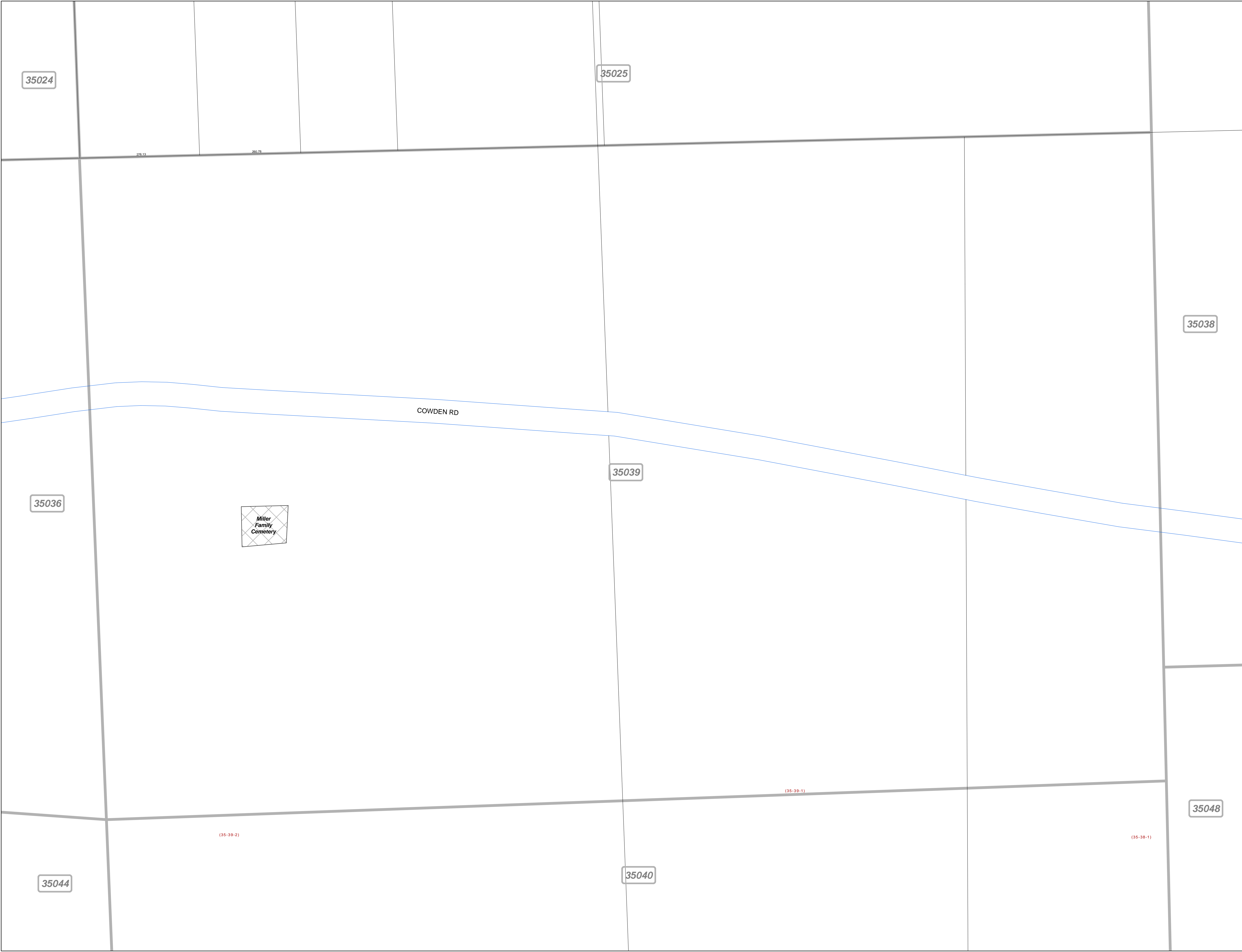
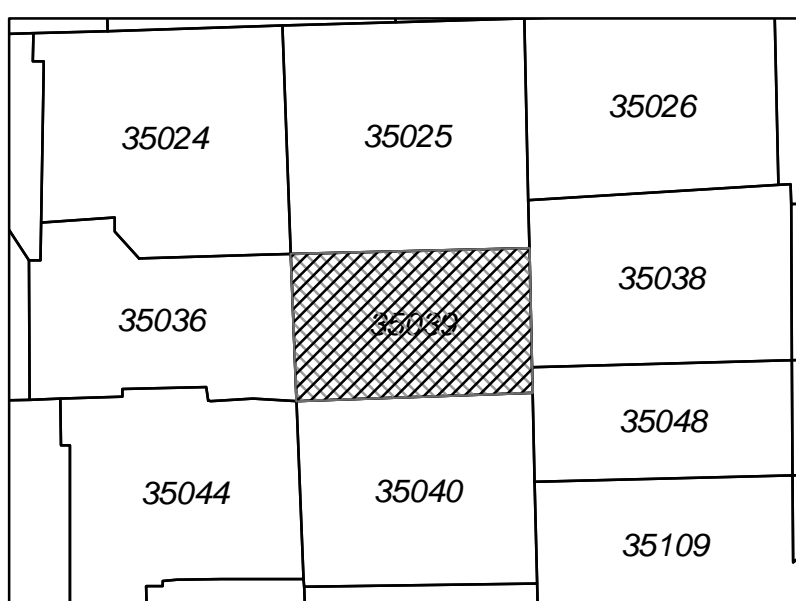


Print Date Dec 31, 2011

LEGEND

- COUNTY LINE
- TOWNSHIP LINE
- CITY LINE
- VILLAGE LINE
- PLAT OUTLINE
- PARCEL LINE
- OLD PARCEL LINE
- PHASE LINE
- ROAD ROW LINE
- RAILROAD ROW LINE
- (01-20-1.03) PARCEL ID NUMBER
- 345 LOT NUMBER
- BELL PLAT 1 PLAT NAME
- 01004 TAX MAP NUMBER

**POLAND TOWNSHIP
Index Map**



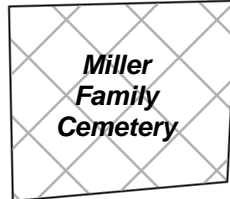
35024

35025

35038

35039

35036



35044

35040

35048

(35-39-2)

(35-38-1)

(35-38-1)