

**MAHONING COUNTY
OHIO
BERLIN TOWNSHIP**

**TAX MAP
22023**

SCALE
1 inch = 200 feet
Approximate



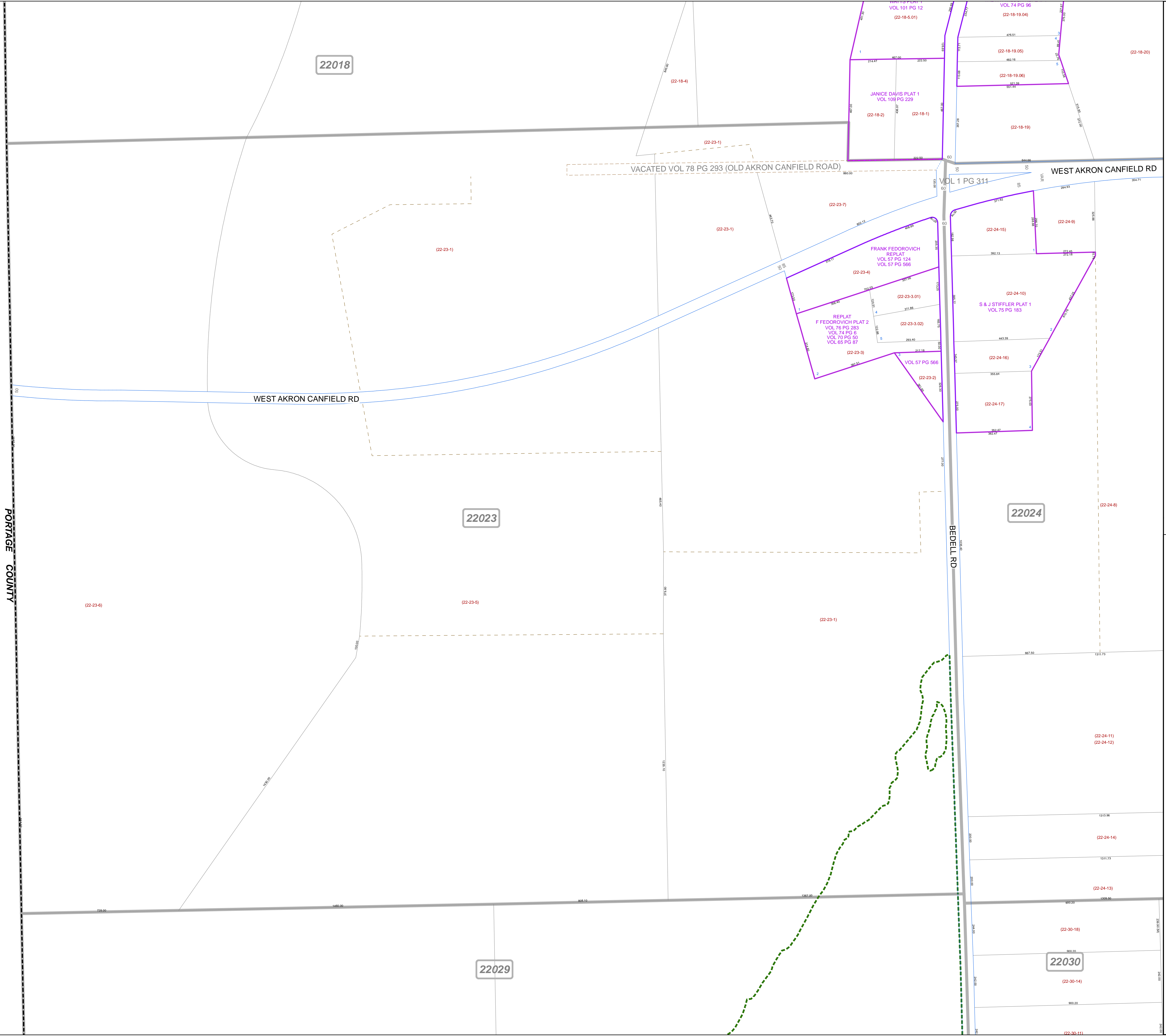
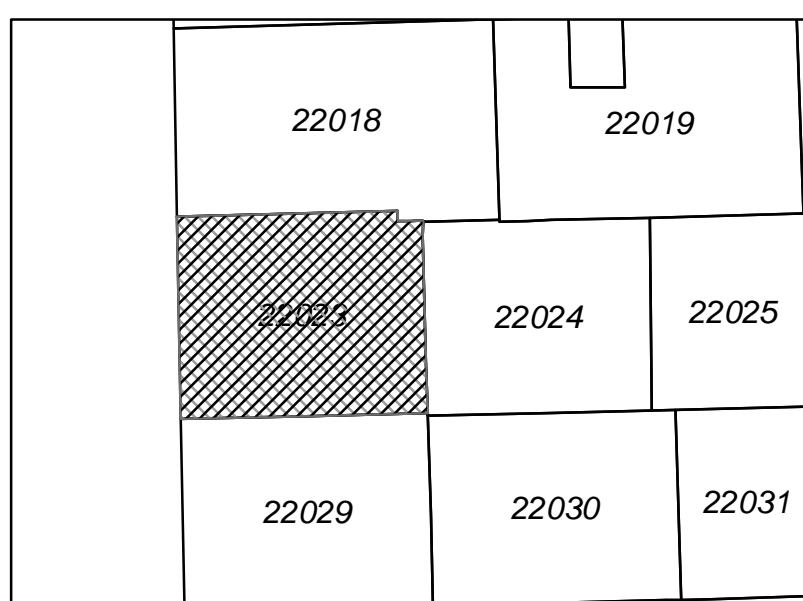
0 50 100 200 300 Feet

Print Date Dec 31, 2011

LEGEND

- COUNTY LINE
- TOWNSHIP LINE
- CITY LINE
- VILLAGE LINE
- PLAT OUTLINE
- PARCEL LINE
- OLD PARCEL LINE
- PHASE LINE
- ROAD ROW LINE
- RAILROAD ROW LINE
- (01-20-1.03) PARCEL ID NUMBER
- 345 LOT NUMBER
- BELL PLAT 1 PLAT NAME
- 01004 TAX MAP NUMBER

**BERLIN TOWNSHIP
Index Map**



22018

22023

22024

22029

22030

PORTAGE COUNTY

BEDELL RD

WEST AKRON CANFIELD RD

VACATED VOL 78 PG 293 (OLD AKRON CANFIELD ROAD)

VOL 1 PG 311

JANICE DAVIS PLAT 1
VOL 109 PG 229

FRANK FEDOROVICH
REPLAT
VOL 57 PG 124
VOL 57 PG 566

REPLAT
F FEDOROVICH PLAT 2
VOL 76 PG 283
VOL 74 PG 6
VOL 70 PG 50
VOL 65 PG 67

S & J STIFFLER PLAT 1
VOL 75 PG 183

(22-23-6)

(22-23-5)

(22-23-1)

(22-24-11)

(22-24-12)

(22-24-14)

(22-24-13)

(22-30-18)

(22-30-14)

(22-30-11)

(22-18-4)

(22-23-1)

(22-23-7)

(22-23-1)

(22-23-4)

(22-23-3.01)

(22-23-3.02)

(22-23-3)

(22-23-2)

(22-24-15)

(22-24-9)

(22-24-10)

(22-24-16)

(22-24-17)

(22-24-8)

(22-18-20)

VOL 74 PG 96

VOL 101 PG 12

(22-18-5.01)

(22-18-19.04)

(22-18-19.05)

(22-18-19.06)

(22-18-19)

WEST AKRON CANFIELD RD