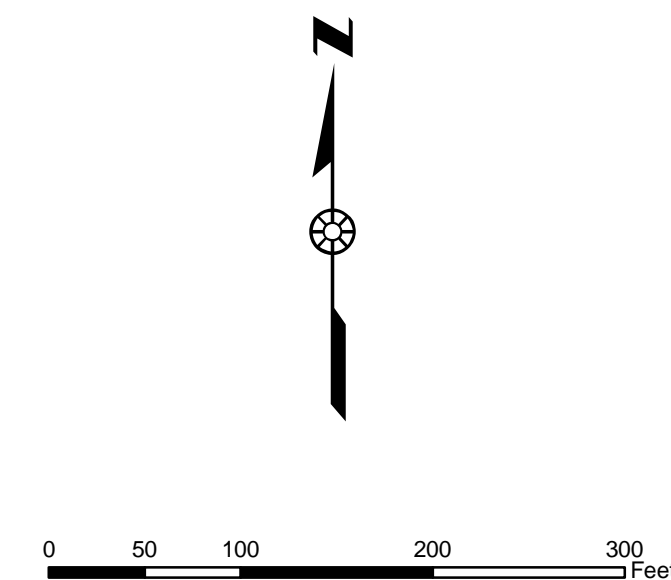


**MAHONING COUNTY  
OHIO  
SEBRING VILLAGE**

**TAX MAP  
21015**

SCALE  
1 inch = 100 feet  
Approximate

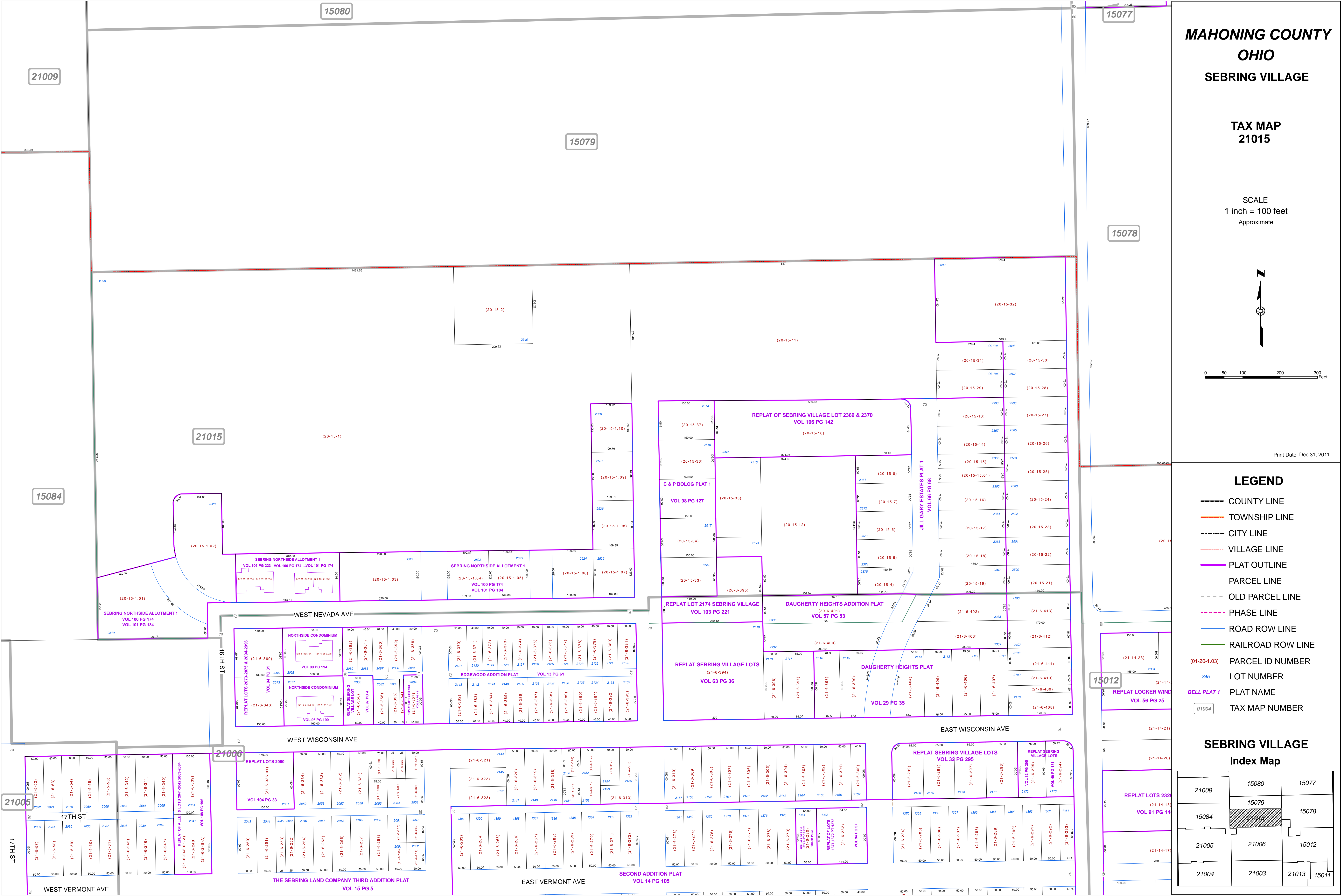
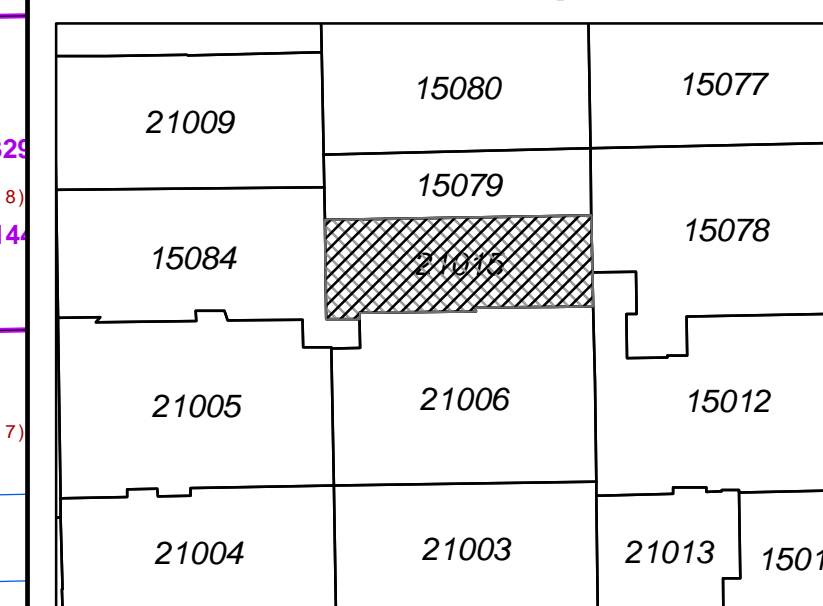


Print Date Dec 31, 2011

**LEGEND**

- COUNTY LINE
- TOWNSHIP LINE
- CITY LINE
- VILLAGE LINE
- PLAT OUTLINE
- PARCEL LINE
- OLD PARCEL LINE
- PHASE LINE
- ROAD ROW LINE
- RAILROAD ROW LINE
- (01-20-1.03) PARCEL ID NUMBER
- 345 LOT NUMBER
- BELL PLAT 1 PLAT NAME
- 01004 TAX MAP NUMBER

**SEBRING VILLAGE  
Index Map**



21009

15080

15077

15079

15078

21015

15084

21006

15012

21005

17TH ST

WEST VERMONT AVE

THE SEBRING LAND COMPANY THIRD ADDITION PLAT  
VOL 15 PG 5

EAST VERMONT AVE

SECOND ADDITION PLAT  
VOL 14 PG 105

EAST WISCONSIN AVE

WEST WISCONSIN AVE

17TH ST

WEST NEVADA AVE

SEBRING NORTHSIDE ALLOTMENT 1  
VOL 100 PG 174  
VOL 101 PG 184

REPLAT LOTS 2071-2075 & 2094-2096  
VOL 94 PG 31

NORTHSIDE CONDOMINIUM  
VOL 99 PG 194

REPLAT SEBRING VILLAGE LOTS  
VOL 97 PG 4

NORTHSIDE CONDOMINIUM  
VOL 96 PG 100

EDGEWOOD ADDITION PLAT  
VOL 13 PG 61

REPLAT LOT 2174 SEBRING VILLAGE  
VOL 103 PG 221

REPLAT SEBRING VILLAGE LOTS  
VOL 63 PG 36

DAUGHERTY HEIGHTS ADDITION PLAT  
VOL 57 PG 53

DAUGHERTY HEIGHTS PLAT  
VOL 29 PG 35

REPLAT OF SEBRING VILLAGE LOT 2369 & 2370  
VOL 106 PG 142

C & P BOLOG PLAT 1  
VOL 98 PG 127

JILL GARY ESTATES PLAT 1  
VOL 66 PG 68

REPLAT SEBRING VILLAGE LOTS  
VOL 32 PG 295

REPLAT SEBRING VILLAGE LOTS  
VOL 32 PG 295

REPLAT SEBRING VILLAGE LOTS  
VOL 49 PG 185

REPLAT SEBRING VILLAGE LOTS  
VOL 49 PG 185

REPLAT LOTS 2325  
VOL 91 PG 14

REPLAT LOCKER WIND  
VOL 56 PG 25

REPLAT LOTS 2325  
VOL 91 PG 14

REPLAT LOTS 2325  
VOL 91 PG 14

REPLAT LOTS 2325  
VOL 91 PG 14

REPLAT LOTS 2325  
VOL 91 PG 14

REPLAT LOTS 2325  
VOL 91 PG 14