

**MAHONING COUNTY
OHIO
SMITH TOWNSHIP**

**TAX MAP
15209**

SCALE
1 inch = 100 feet
Approximate



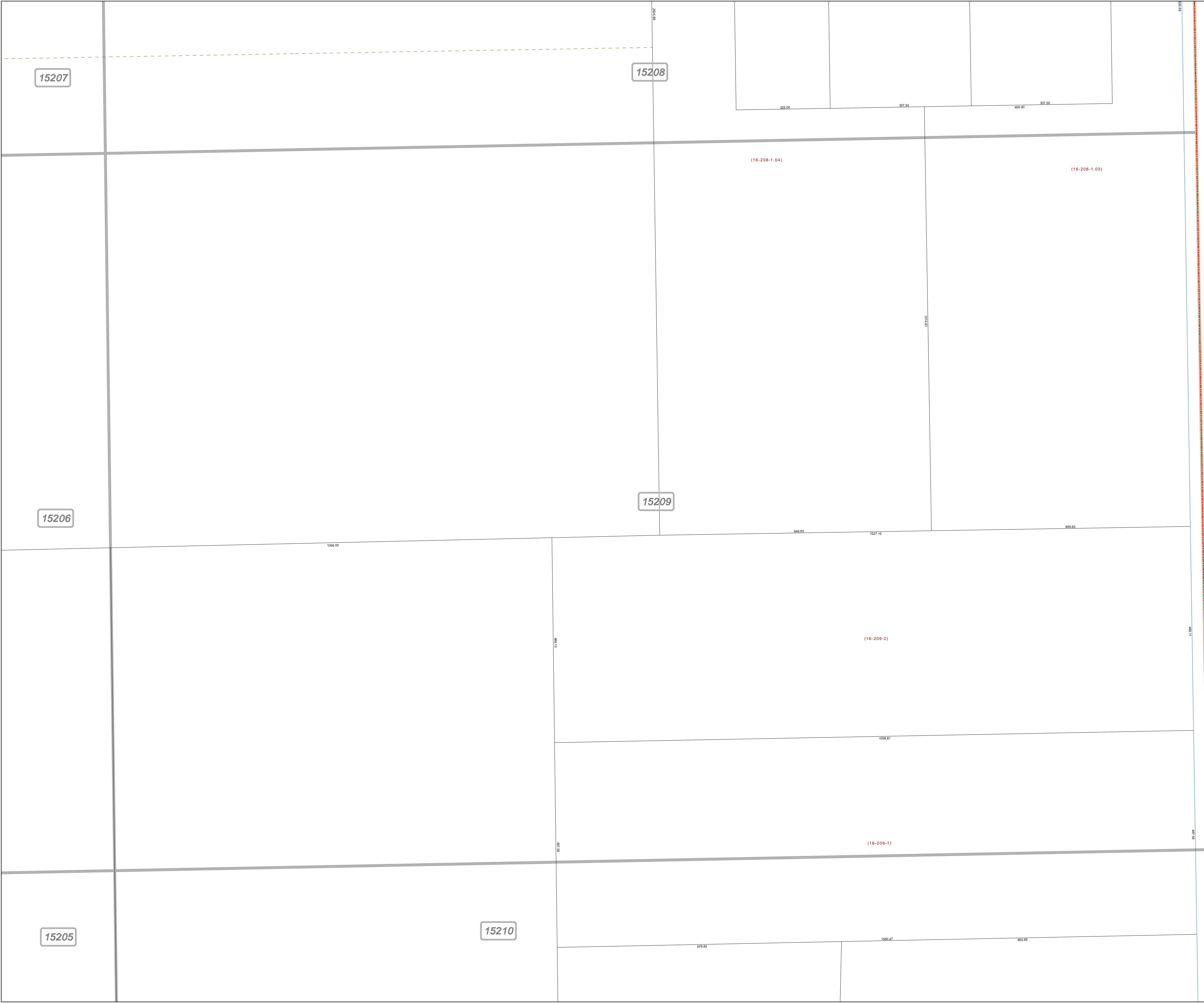
Print Date Dec 31, 2011

LEGEND

- COUNTY LINE
- TOWNSHIP LINE
- CITY LINE
- VILLAGE LINE
- PLAT OUTLINE
- PARCEL LINE
- OLD PARCEL LINE
- PHASE LINE
- ROAD ROW LINE
- RAILROAD ROW LINE
- (01-20-1.03) PARCEL ID NUMBER
- 345 LOT NUMBER
- BELL PLAT 1 PLAT NAME
- 01004 TAX MAP NUMBER

**SMITH TOWNSHIP
Index Map**

22041	22042	22043
15207	15208	13064
15206	15209	13063
15205	15210	13062
15142	15141	13062



13064

13063

15208

15209

15207

15206

15205

15210

(16-208-1.04)

(16-208-1.03)

(16-209-2)

(16-209-1)

SMITH GOSHEN RD