

PORTAGE COUNTY

MAHONING COUNTY
OHIO
SMITH TOWNSHIP

TAX MAP
15178

SCALE
1 inch = 100 feet
Approximate

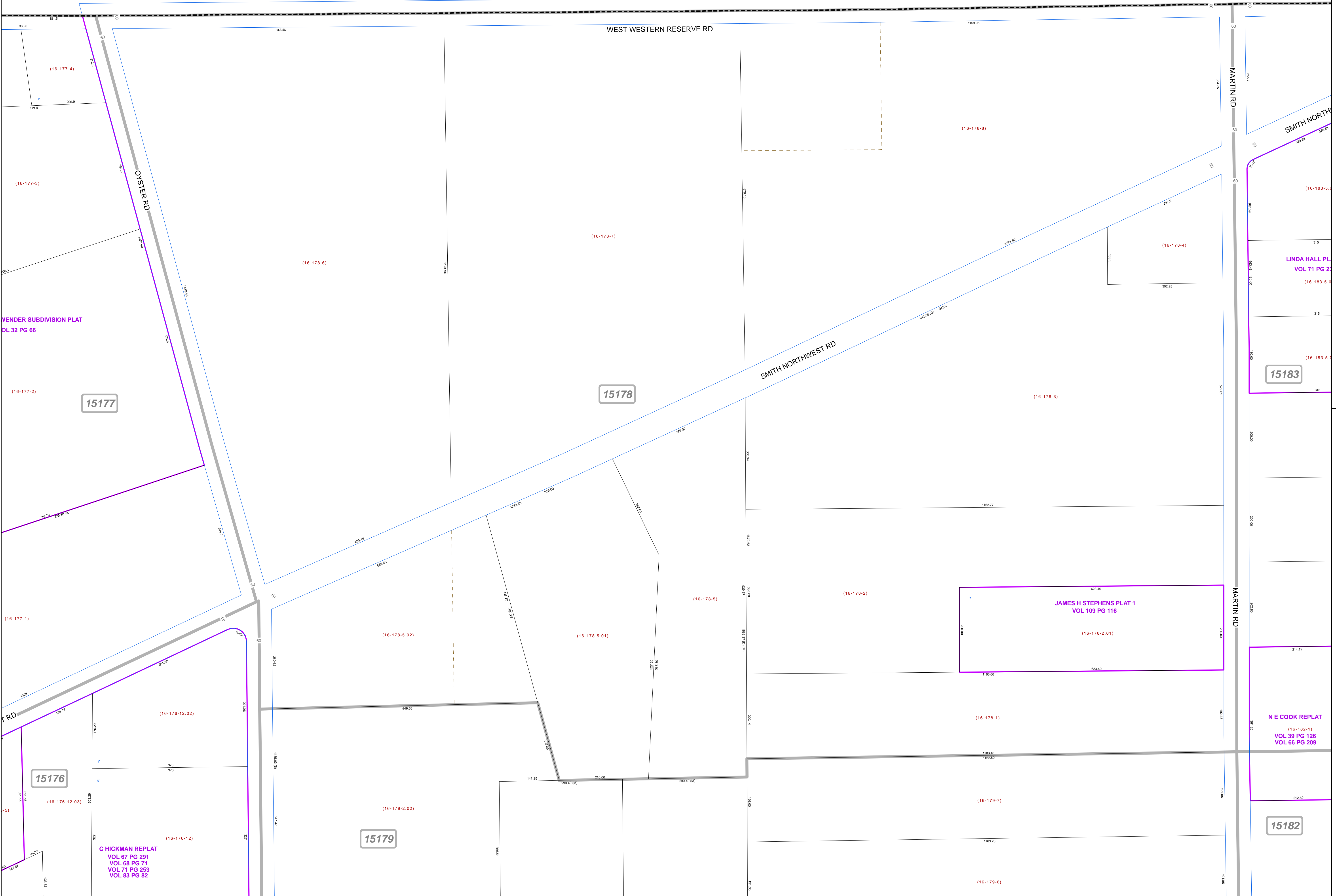
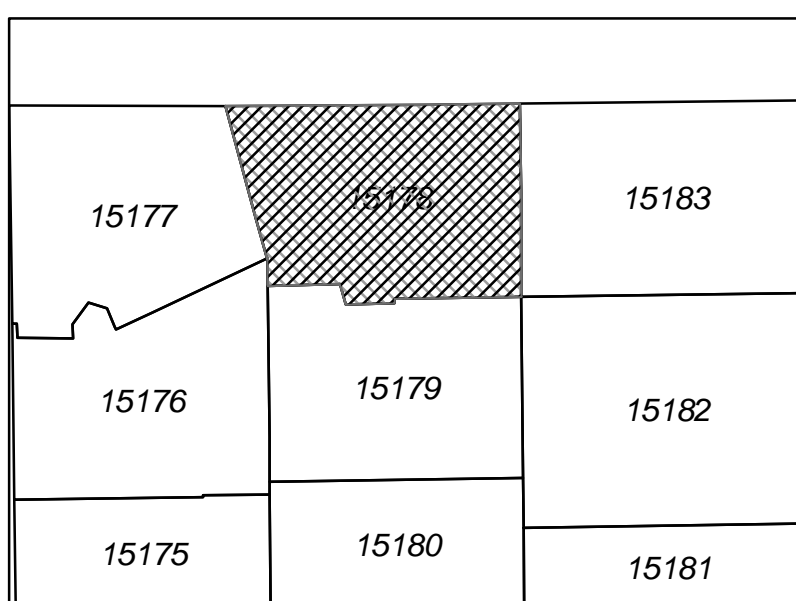


Print Date Dec 31, 2011

LEGEND

- COUNTY LINE
- TOWNSHIP LINE
- CITY LINE
- VILLAGE LINE
- PLAT OUTLINE
- PARCEL LINE
- OLD PARCEL LINE
- PHASE LINE
- ROAD ROW LINE
- RAILROAD ROW LINE
- (01-20-1.03) PARCEL ID NUMBER
- 345 LOT NUMBER
- BELL PLAT 1 PLAT NAME
- 01004 TAX MAP NUMBER

SMITH TOWNSHIP
Index Map



15177

15178

15183

15176

15179

15182