

**MAHONING COUNTY
OHIO**

SMITH TOWNSHIP

**TAX MAP
15151**

SCALE
1 inch = 100 feet
Approximate



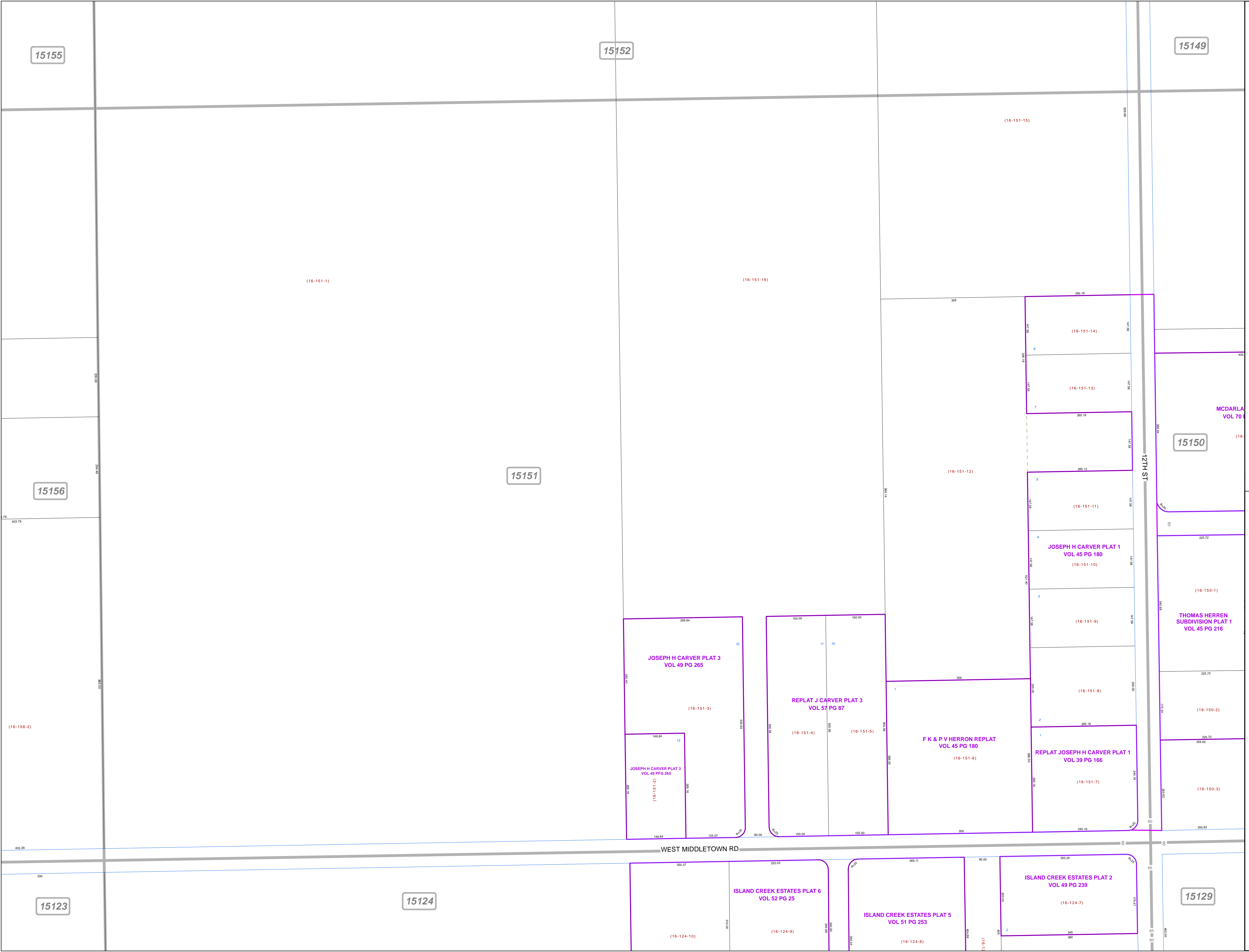
Print Date Dec 31, 2011

LEGEND

- COUNTY LINE
- TOWNSHIP LINE
- CITY LINE
- VILLAGE LINE
- PLAT OUTLINE
- PARCEL LINE
- OLD PARCEL LINE
- PHASE LINE
- ROAD ROW LINE
- RAILROAD ROW LINE
- (01-20-1.03) PARCEL ID NUMBER
- 345 LOT NUMBER
- BELL PLAT 1 PLAT NAME
- 01004 TAX MAP NUMBER

**SMITH TOWNSHIP
Index Map**

15155	15152	15149
15156	15151	15150
15123	15124	15129



15155

15152

15149

(16-151-1)

(16-151-16)

(16-151-15)

(16-151-14)

(16-151-13)

15150

MCDARLA
VOL 70

15151

15156

(16-151-12)

(16-151-11)

JOSEPH H CARVER PLAT 1
VOL 45 PG 180

(16-151-10)

(16-150-1)

THOMAS HERREN
SUBDIVISION PLAT 1
VOL 45 PG 216

JOSEPH H CARVER PLAT 3
VOL 49 PG 265

(16-151-3)

REPLAT J CARVER PLAT 3
VOL 57 PG 87

(16-151-4)

(16-151-5)

F & P V HERRON REPLAT
VOL 45 PG 180

(16-151-6)

REPLAT JOSEPH H CARVER PLAT 1
VOL 39 PG 166

(16-151-7)

(16-150-2)

(16-150-1)

(16-150-3)

WEST MIDDLETOWN RD

12TH ST

15123

15124

15129

ISLAND CREEK ESTATES PLAT 6
VOL 52 PG 25

(16-124-10)

(16-124-9)

ISLAND CREEK ESTATES PLAT 5
VOL 51 PG 253

(16-124-8)

ISLAND CREEK ESTATES PLAT 2
VOL 49 PG 239

(16-124-7)