

**MAHONING COUNTY
OHIO
SMITH TOWNSHIP**

**TAX MAP
15100**

SCALE
1 inch = 100 feet
Approximate



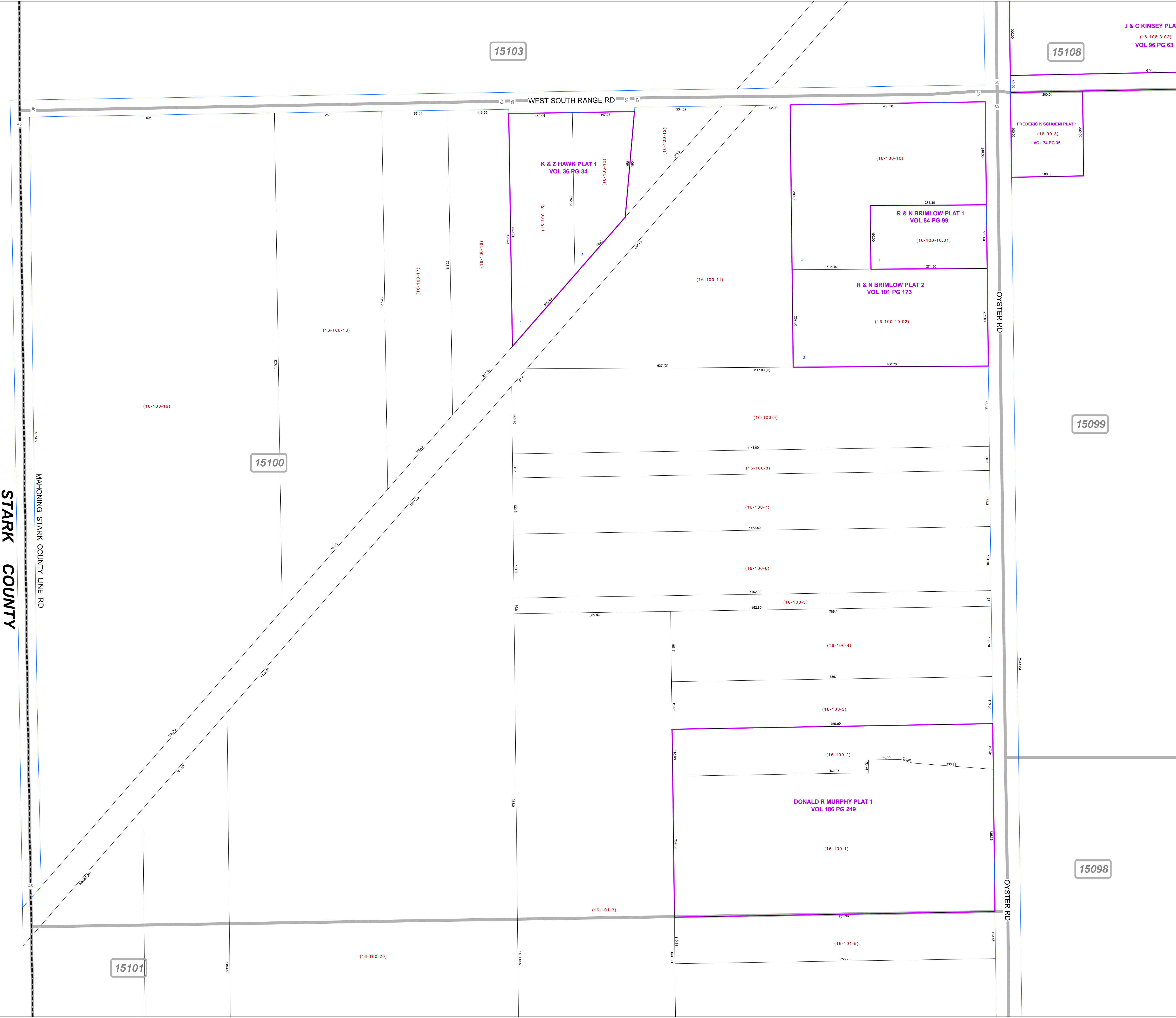
Print Date Dec 31, 2011

LEGEND

- COUNTY LINE
- TOWNSHIP LINE
- CITY LINE
- VILLAGE LINE
- PLAT OUTLINE
- PARCEL LINE
- OLD PARCEL LINE
- PHASE LINE
- ROAD ROW LINE
- RAILROAD ROW LINE
- PARCEL ID NUMBER
- LOT NUMBER
- PLAT NAME
- TAX MAP NUMBER

**SMITH TOWNSHIP
Index Map**

	15104		15110
	15103	15108	15109
	15100	15099	15094
	15101	15098	15095
			15096



J & C KINSEY PLAT 1
(16-108-3.02)
VOL 96 PG 63

FREDERIC K SCHOENI PLAT 1
(16-99-3)
VOL 74 PG 35

R & N BRIMLOW PLAT 1
VOL 84 PG 99

R & N BRIMLOW PLAT 2
VOL 101 PG 173

K & Z HAWK PLAT 1
VOL 36 PG 34

DONALD R MURPHY PLAT 1
VOL 106 PG 249

15103

15108

15100

15099

15101

15098

STARK COUNTY

MAHONING STARK COUNTY LINE RD

WEST SOUTH RANGE RD

OYSTER RD

OYSTER RD