

**MAHONING COUNTY
OHIO
GOSHEN TOWNSHIP**

**TAX MAP
13053**

SCALE
1 inch = 200 feet
Approximate



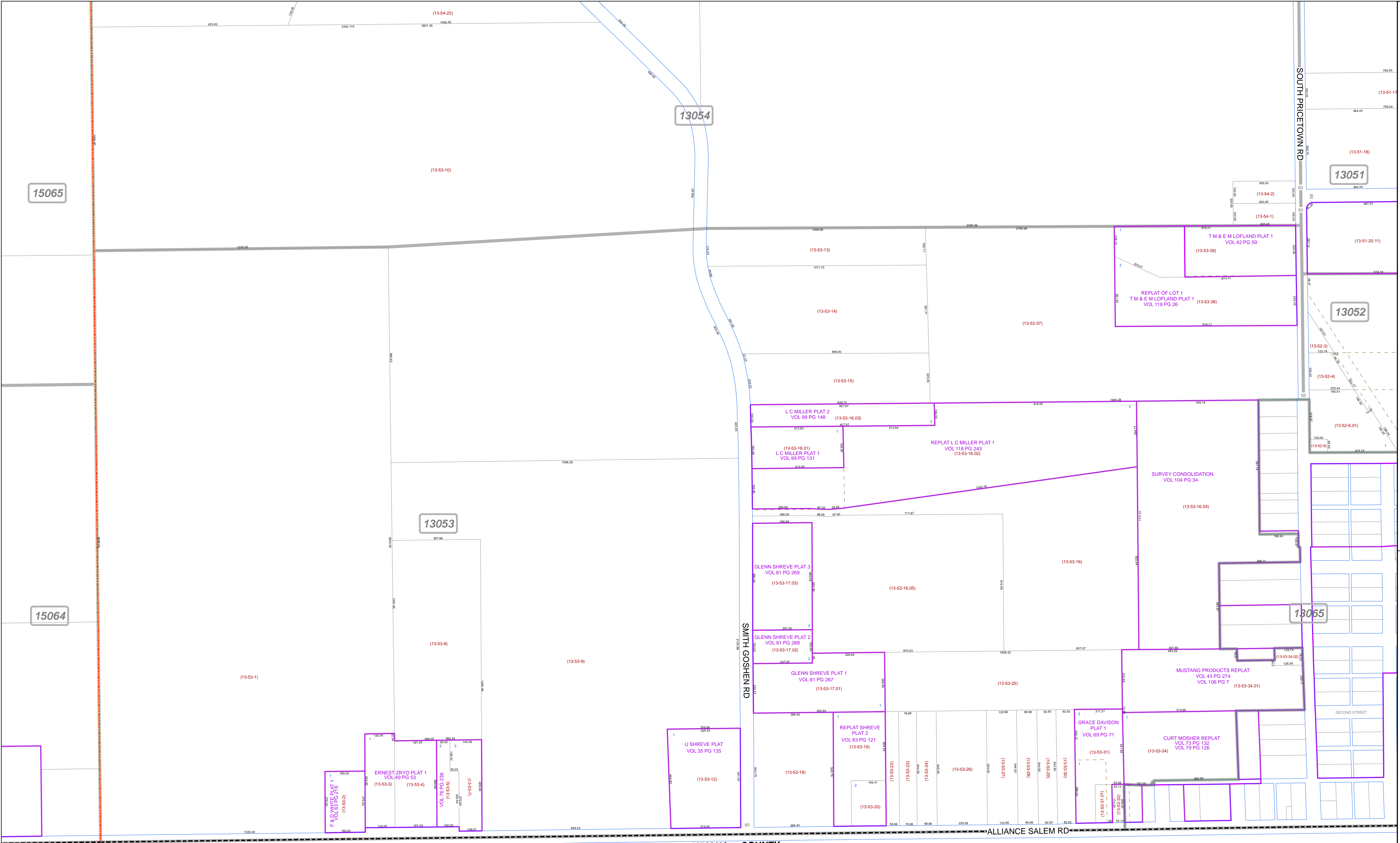
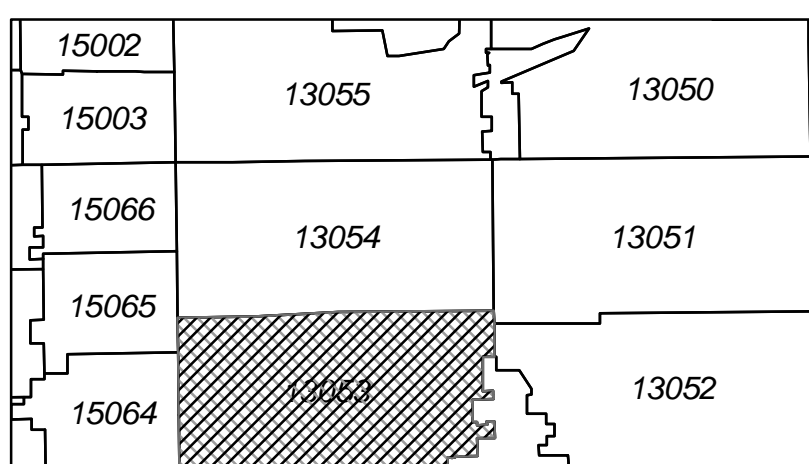
0 50 100 200 300 Feet

Print Date Dec 31, 2011

LEGEND

- COUNTY LINE
- TOWNSHIP LINE
- CITY LINE
- VILLAGE LINE
- PLAT OUTLINE
- PARCEL LINE
- OLD PARCEL LINE
- PHASE LINE
- ROAD ROW LINE
- RAILROAD ROW LINE
- PARCEL ID NUMBER
- LOT NUMBER
- PLAT NAME
- TAX MAP NUMBER

**GOSHEN TOWNSHIP
Index Map**



15065

13054

13051

13052

13053

15064

13065

COLUMBIANA COUNTY

ALLIANCE SALEM RD

SMITH GOSHEN RD

SOUTH PRICETOWN RD

SECOND STREET

ERNEST ZRYO PLAT 1
VOL 49 PG 53
(13-53-3)

U SHREVE PLAT
VOL 35 PG 135
(13-53-12)

GLENN SHREVE PLAT 1
VOL 81 PG 267
(13-53-17.01)

GLENN SHREVE PLAT 2
VOL 81 PG 268
(13-53-17.02)

GLENN SHREVE PLAT 3
VOL 81 PG 269
(13-53-17.03)

REPLAT SHREVE
PLAT 2
VOL 83 PG 121
(13-53-19)

GRACE DAVISON
PLAT 1
VOL 69 PG 71
(13-53-31)

CURT MOSHER REPLAT
VOL 73 PG 152
VOL 73 PG 126
(13-53-34)

MUSTANG PRODUCTS REPLAT
VOL 43 PG 274
VOL 106 PG 7
(13-53-34.01)

SURVEY CONSOLIDATION
VOL 104 PG 34
(13-53-16.04)

REPLAT L.C. MILLER PLAT 1
VOL 119 PG 245
(13-53-16.02)

L.C. MILLER PLAT 2
VOL 99 PG 148
(13-53-16.03)

L.C. MILLER PLAT 1
VOL 99 PG 131
(13-53-16.01)

T.M. & E.M. LOFLAND PLAT 1
VOL 42 PG 59
(13-53-38)

REPLAT OF LOT 1
T.M. & E.M. LOFLAND PLAT 1
VOL 119 PG 26
(13-53-38)