

**MAHONING COUNTY
OHIO
GOSHEN TOWNSHIP**

**TAX MAP
13050**

SCALE
1 inch = 200 feet
Approximate



0 50 100 200 300 Feet

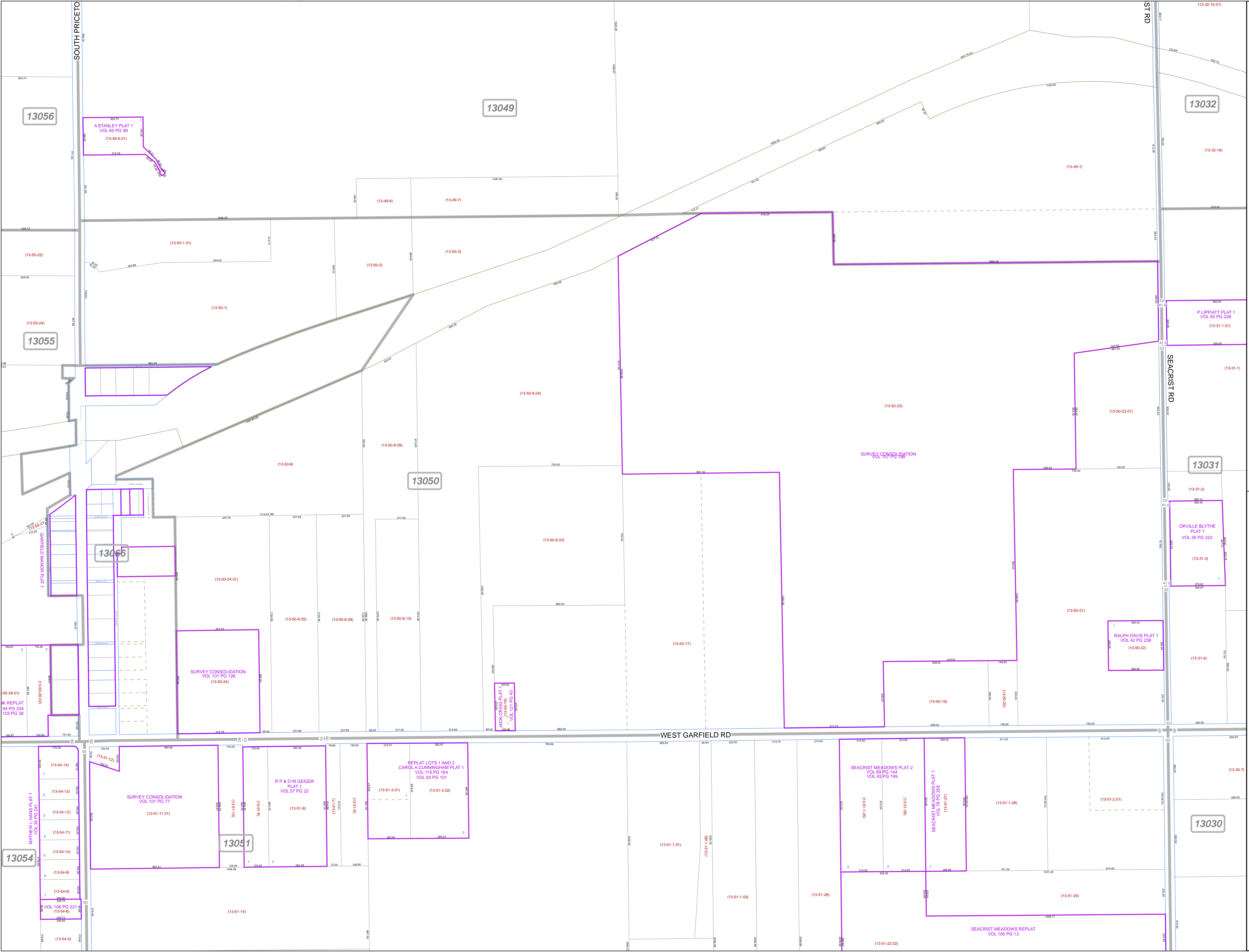
Print Date Dec 31, 2011

LEGEND

- COUNTY LINE
- TOWNSHIP LINE
- CITY LINE
- VILLAGE LINE
- PLAT OUTLINE
- PARCEL LINE
- OLD PARCEL LINE
- PHASE LINE
- ROAD ROW LINE
- RAILROAD ROW LINE
- (01-20-1.03) PARCEL ID NUMBER
- 345 LOT NUMBER
- BELL PLAT 1 PLAT NAME
- 01004 TAX MAP NUMBER

**GOSHEN TOWNSHIP
Index Map**

13057	13048	13033
13056	13049	13032
13055	13050	13031
13054	13051	13030
13053	13052	13029



13056

13049

13032

13055

13050

13031

13066

13051

13054

13030

ASTANLEY PLAT 1
VOL 85 PG 99
(13-49-5.01)

P LIPPATT PLAT 1
VOL 92 PG 226
(13-31-1.01)

ORVILLE BLYTHE
PLAT 1
VOL 35 PG 222
(13-31-3)

RALPH DAVIS PLAT 1
VOL 42 PG 236
(13-50-22)

JACK CRAIG PLAT 1
VOL 106 PG 43
(13-50-19)

REPLAT LOTS 1 AND 2
CAROLA CUNNINGHAM PLAT 1
VOL 118 PG 164
VOL 93 PG 101
(13-51-3.01) (13-51-3.02)

R P & O M GEIGER
PLAT 1
VOL 57 PG 22
(13-51-8)

SEACRIST MEADOWS PLAT 2
VOL 93 PG 144
VOL 93 PG 199
(09-1-9.61) (08-1-9.61)

SEACRIST MEADOWS PLAT 1
VOL 93 PG 205
(13-51-27)

SEACRIST MEADOWS REPLAT
VOL 105 PG 13

(13-50-1.01)

(13-50-1)

(13-50-6)

(13-50-24.01)

SURVEY CONSOLIDATION
VOL 101 PG 126
(13-50-24)

(13-51-11.01)

(13-51-14)

(13-49-6)

(13-49-7)

(13-50-2)

(13-50-3)

(13-50-4.04)

(13-50-8.09)

(13-50-8.03)

(13-50-8.05)

(13-50-8.08)

(13-50-8.10)

(13-50-17)

(13-50-23)

(13-50-23.01)

(13-50-21)

(13-50-19)

(13-32-15.01)

(13-31-1)

(13-31-2)

(13-31-4)

(13-30-7)

(13-51-1.01)

(13-51-1.03)

(13-51-26)

(13-51-22.02)

(13-51-1.08)

(13-51-2.01)

(13-51-29)