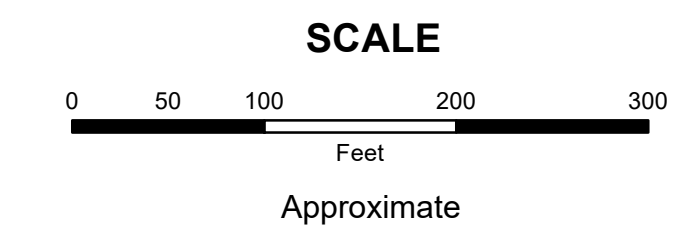
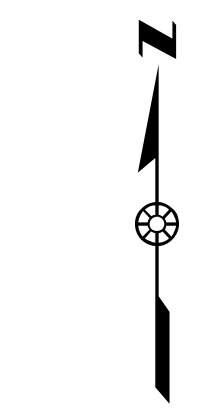


**MAHONING COUNTY
OHIO
YOUNGSTOWN CITY**

**TAX MAP
53175**

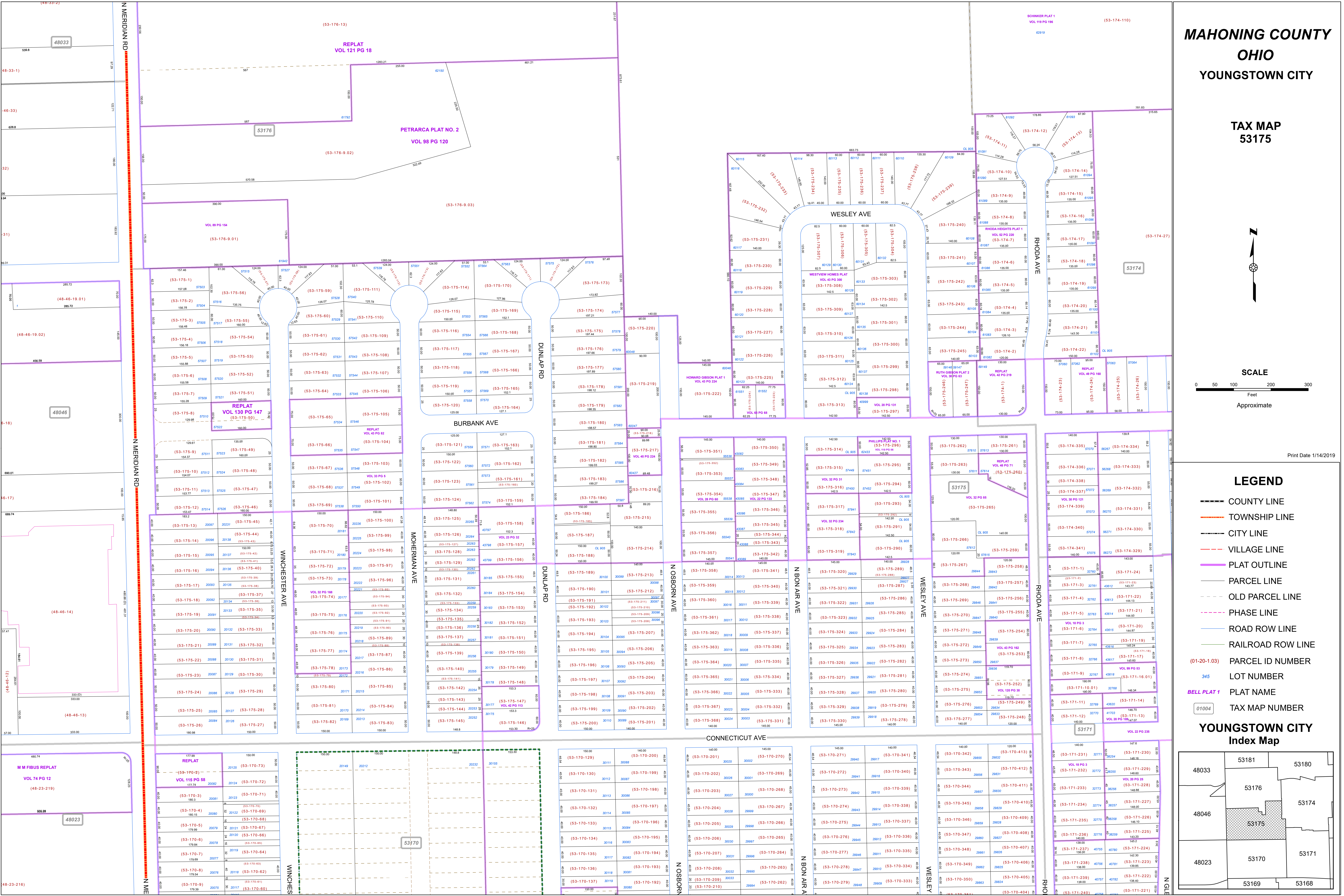
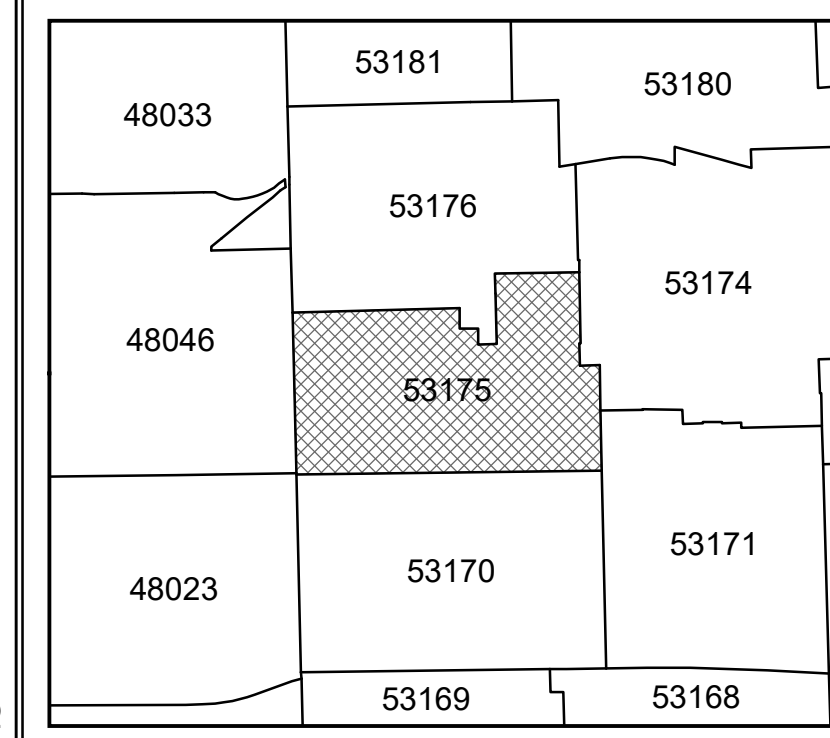


Print Date 1/14/2019

LEGEND

- COUNTY LINE
- TOWNSHIP LINE
- CITY LINE
- VILLAGE LINE
- PLAT OUTLINE
- PARCEL LINE
- OLD PARCEL LINE
- PHASE LINE
- ROAD ROW LINE
- RAILROAD ROW LINE
- (01-20-1.03) PARCEL ID NUMBER
- 345 LOT NUMBER
- BELL PLAT 1 PLAT NAME
- 01004 TAX MAP NUMBER

**YOUNGSTOWN CITY
Index Map**



| Plat Name | Lot Number | Parcel ID | | | |
|----------------------------------|-----------------------------------|-----------------------------|-----------------------------------|---------------|------------|
| REPLAT VOL 121 PG 18 | 53176 | (53-176-13) | | | |
| | PETRARCA PLAT NO. 2 VOL 98 PG 120 | 62100 | (53-176-9.02) | | |
| | | 61790 | (53-176-9.03) | | |
| | | VOL 89 PG 154 (53-176-9.01) | 390.00 | (53-176-9.01) | |
| | | | REPLAT VOL 130 PG 147 (53-175-50) | 157.46 | (53-175-1) |
| | | | | 157.08 | (53-175-2) |
| | | | | 156.78 | (53-175-3) |
| | | | | 156.48 | (53-175-4) |
| | | | | 156.18 | (53-175-5) |
| | | | | 155.88 | (53-175-6) |
| 155.58 | | | | (53-175-7) | |
| 155.28 | (53-175-8) | | | | |
| 154.98 | (53-175-9) | | | | |
| 154.68 | (53-175-10) | | | | |
| REPLAT VOL 48 PG 82 | 129.61 | (53-175-49) | | | |
| | 129.31 | (53-175-48) | | | |
| | 129.01 | (53-175-47) | | | |
| | 128.71 | (53-175-46) | | | |
| | 128.41 | (53-175-45) | | | |
| | 128.11 | (53-175-44) | | | |
| | 127.81 | (53-175-43) | | | |
| | 127.51 | (53-175-42) | | | |
| | 127.21 | (53-175-41) | | | |
| | 126.91 | (53-175-40) | | | |
| REPLAT VOL 48 PG 71 (53-175-260) | 142.50 | (53-175-260) | | | |
| | 142.20 | (53-175-259) | | | |
| | 141.90 | (53-175-258) | | | |
| | 141.60 | (53-175-257) | | | |
| | 141.30 | (53-175-256) | | | |
| | 141.00 | (53-175-255) | | | |
| | 140.70 | (53-175-254) | | | |
| | 140.40 | (53-175-253) | | | |
| | 140.10 | (53-175-252) | | | |
| | 139.80 | (53-175-251) | | | |
| REPLAT VOL 48 PG 85 | 130.00 | (53-174-262) | | | |
| | 129.70 | (53-174-261) | | | |
| | 129.40 | (53-174-260) | | | |
| | 129.10 | (53-174-259) | | | |
| | 128.80 | (53-174-258) | | | |
| | 128.50 | (53-174-257) | | | |
| | 128.20 | (53-174-256) | | | |
| | 127.90 | (53-174-255) | | | |
| | 127.60 | (53-174-254) | | | |
| | 127.30 | (53-174-253) | | | |
| REPLAT VOL 48 PG 180 | 140.00 | (53-174-335) | | | |
| | 139.70 | (53-174-334) | | | |
| | 139.40 | (53-174-333) | | | |
| | 139.10 | (53-174-332) | | | |
| | 138.80 | (53-174-331) | | | |
| | 138.50 | (53-174-330) | | | |
| | 138.20 | (53-174-329) | | | |
| | 137.90 | (53-174-328) | | | |
| | 137.60 | (53-174-327) | | | |
| | 137.30 | (53-174-326) | | | |
| REPLAT VOL 48 PG 12 | 177.90 | (53-170-2) | | | |
| | 177.60 | (53-170-1) | | | |
| | 177.30 | (53-170-0) | | | |
| | 177.00 | (53-170-0) | | | |
| | 176.70 | (53-170-0) | | | |
| | 176.40 | (53-170-0) | | | |
| | 176.10 | (53-170-0) | | | |
| | 175.80 | (53-170-0) | | | |
| | 175.50 | (53-170-0) | | | |
| | 175.20 | (53-170-0) | | | |