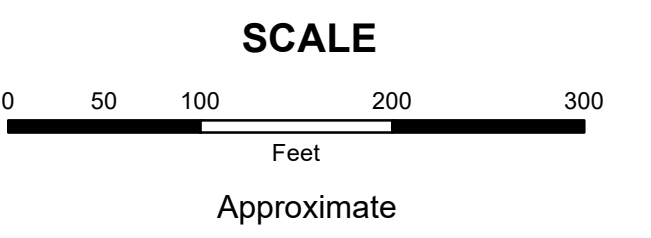


**MAHONING COUNTY
OHIO
MILTON TOWNSHIP**

**TAX MAP
51131**



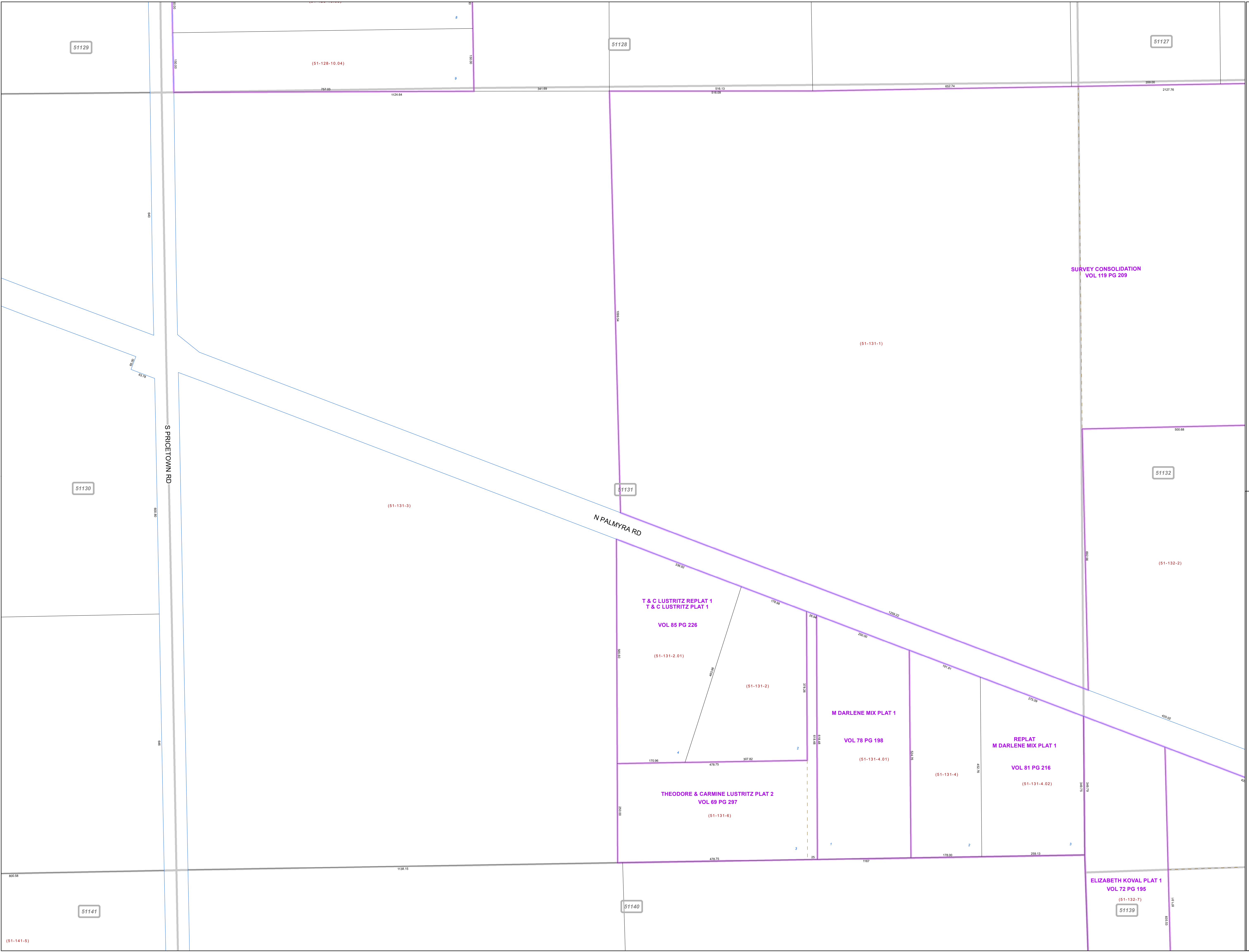
Print Date 1/14/2019

LEGEND

- COUNTY LINE
- TOWNSHIP LINE
- CITY LINE
- VILLAGE LINE
- PLAT OUTLINE
- PARCEL LINE
- OLD PARCEL LINE
- PHASE LINE
- ROAD ROW LINE
- RAILROAD ROW LINE
- (01-20-1.03) PARCEL ID NUMBER
- 345 LOT NUMBER
- BELL PLAT 1 PLAT NAME
- 01004 TAX MAP NUMBER

**MILTON TOWNSHIP
Index Map**

51129	51128	51127
51130	51131	51132
51141	51140	51139



51129

51128

51127

(51-128-10.04)

51131

51132

51130

(51-131-3)

N PALMYRA RD

T & C LUSTRITZ REPLAT 1
T & C LUSTRITZ PLAT 1
VOL 85 PG 226

(51-131-2.01)

(51-131-2)

M DARLENE MIX PLAT 1
VOL 78 PG 198

(51-131-4.01)

REPLAT
M DARLENE MIX PLAT 1
VOL 81 PG 216

(51-131-4.02)

THEODORE & CARMINE LUSTRITZ PLAT 2
VOL 69 PG 297

(51-131-6)

ELIZABETH KOVAL PLAT 1
VOL 72 PG 195

(51-132-7)

51139

51140

51141

(51-141-5)