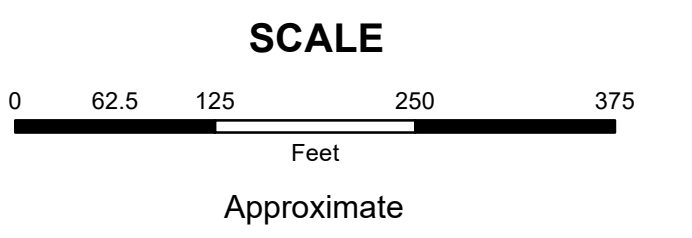


**MAHONING COUNTY  
OHIO  
MILTON TOWNSHIP**

**TAX MAP  
51112**



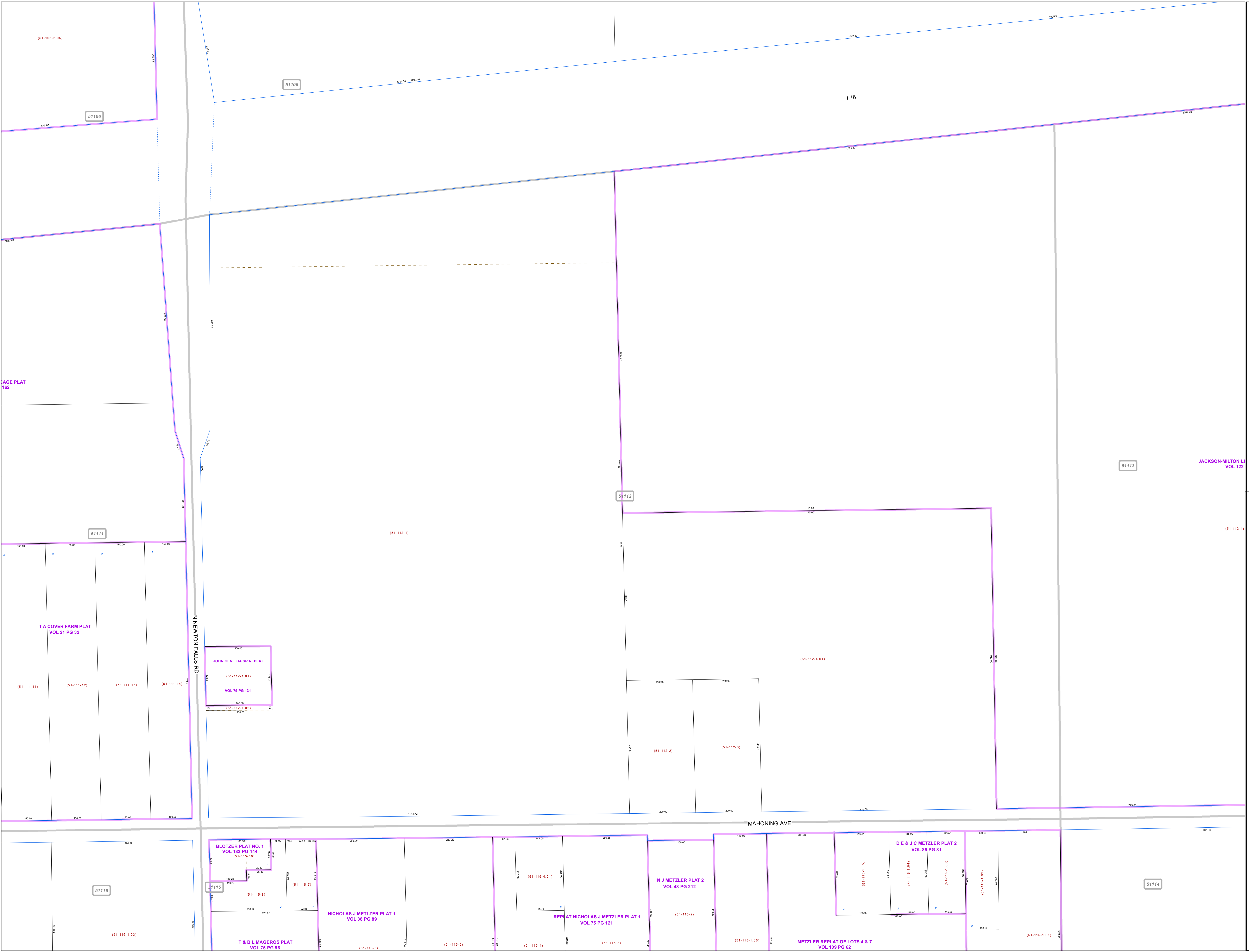
Print Date 1/14/2019

**LEGEND**

- COUNTY LINE
- TOWNSHIP LINE
- CITY LINE
- VILLAGE LINE
- PLAT OUTLINE
- PARCEL LINE
- OLD PARCEL LINE
- PHASE LINE
- ROAD ROW LINE
- RAILROAD ROW LINE
- (01-20-1.03) PARCEL ID NUMBER
- 345 LOT NUMBER
- BELL PLAT 1 PLAT NAME
- 01004 TAX MAP NUMBER

**MILTON TOWNSHIP  
Index Map**

51101	51102	51103
51106	51105	51104
51111	51112	51113
51116	51115	51114
		51123



JOHN GENETTA SR REPLAT  
(51-112-1.01)  
VOL 79 PG 131

BLOTZER PLAT NO. 1  
VOL 133 PG 144  
(51-115-10)

T & B L MAGEROS PLAT  
VOL 75 PG 96

NICHOLAS J METZLER PLAT 1  
VOL 38 PG 89

REPLAT NICHOLAS J METZLER PLAT 1  
VOL 75 PG 121

N J METZLER PLAT 2  
VOL 48 PG 212

D E & J C METZLER PLAT 2  
VOL 88 PG 81

METZLER REPLAT OF LOTS 4 & 7  
VOL 109 PG 62