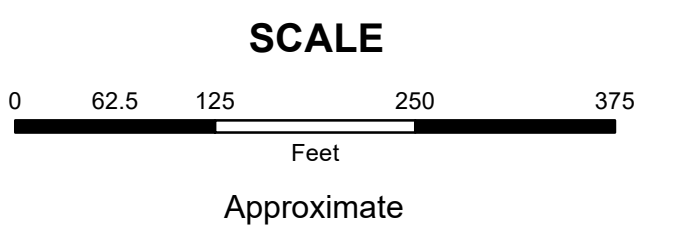


**MAHONING COUNTY
OHIO**

POLAND TOWNSHIP
Great Lot 52-59

**TAX MAP
35109**



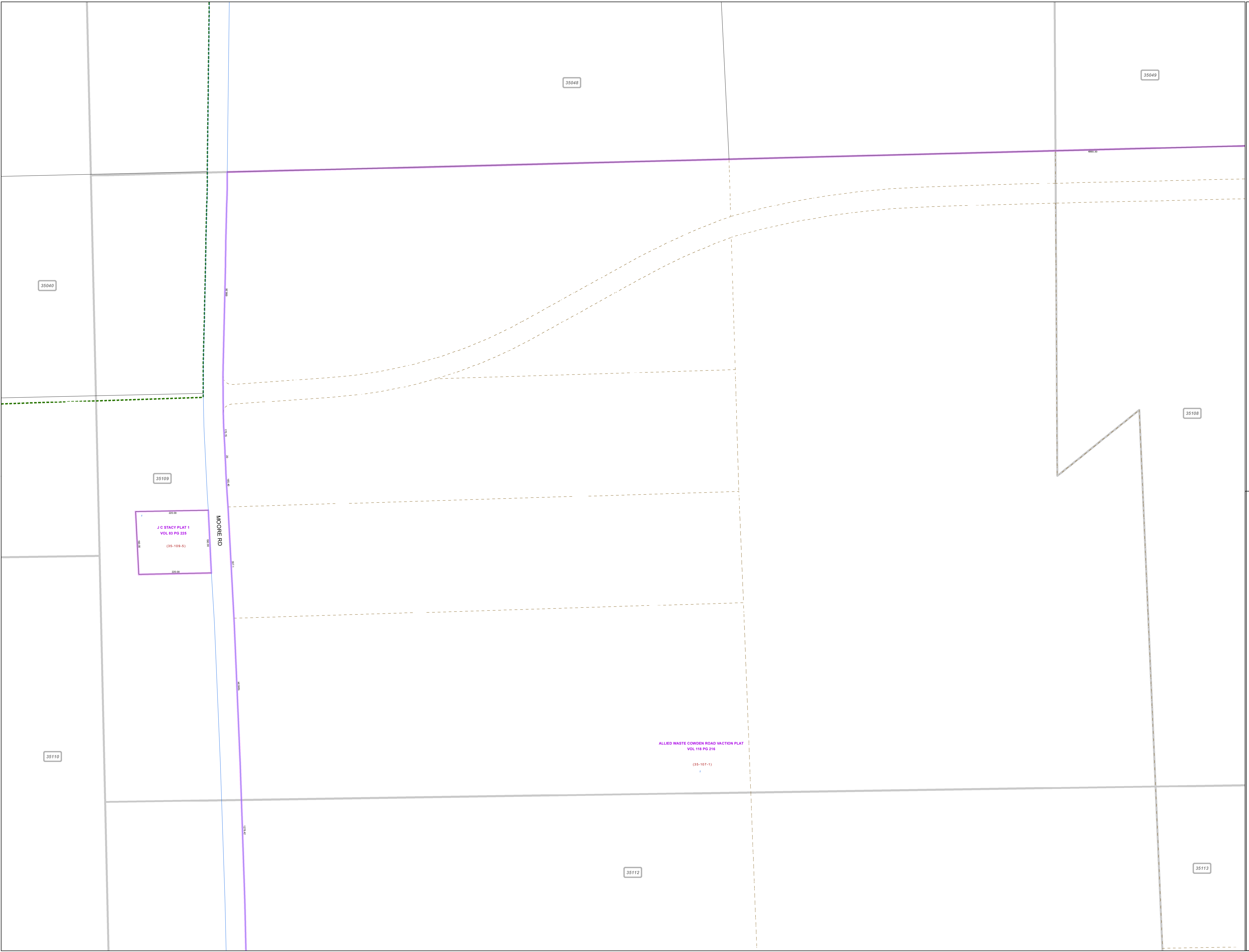
Print Date 1/14/2019

LEGEND

- COUNTY LINE
- TOWNSHIP LINE
- CITY LINE
- VILLAGE LINE
- PLAT OUTLINE
- PARCEL LINE
- OLD PARCEL LINE
- PHASE LINE
- ROAD ROW LINE
- RAILROAD ROW LINE
- (01-20-1.03) PARCEL ID NUMBER
- 345 LOT NUMBER
- BELL PLAT 1 PLAT NAME
- 01004 TAX MAP NUMBER

**POLAND TOWNSHIP
Index Map**

| | | |
|-------|-------|-------|
| 35039 | 35038 | 35037 |
| 35040 | 35048 | 35049 |
| 35110 | 35109 | 35108 |
| 35111 | 35112 | 35113 |
| | | 35116 |



J C STACY PLAT 1
VOL 83 PG 225
(35-109-5)

ALLIED WASTE COWDEN ROAD VACATION PLAT
VOL 118 PG 216
(35-107-1)

MOORE RD