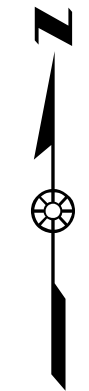


MAHONING COUNTY OHIO

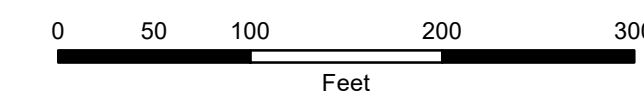
POLAND TOWNSHIP

Great Lot 57-63 58-64

TAX MAP 35037



SCALE



Feet

Approximate

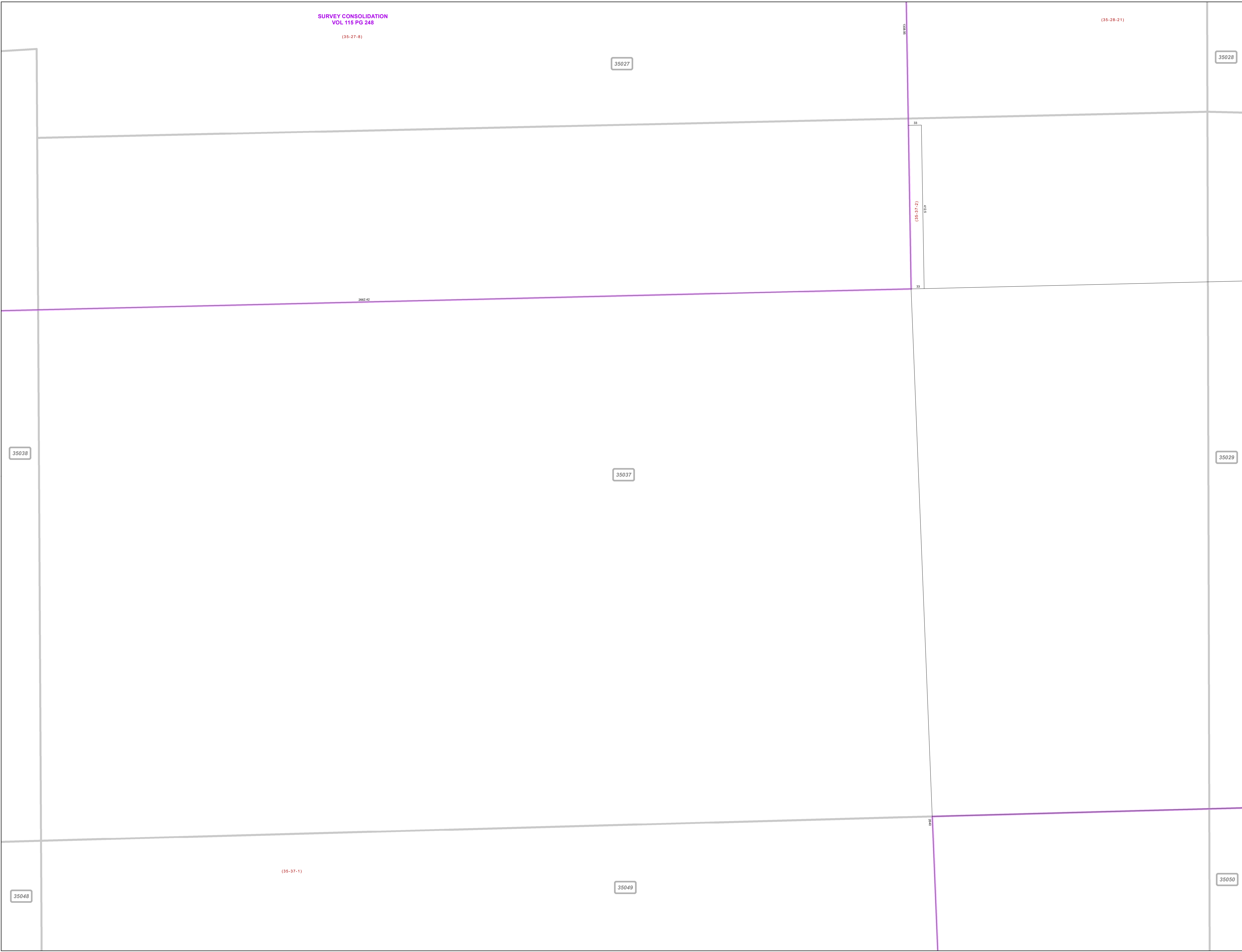
Print Date 1/14/2019

LEGEND

- COUNTY LINE
- - - TOWNSHIP LINE
- · - · - CITY LINE
- - - VILLAGE LINE
- PLAT OUTLINE
- PARCEL LINE
- - - OLD PARCEL LINE
- · - · - PHASE LINE
- ROAD ROW LINE
- RAILROAD ROW LINE
- (01-20-1.03) PARCEL ID NUMBER
- 345 LOT NUMBER
- BELL PLAT 1 PLAT NAME
- 01004 TAX MAP NUMBER

POLAND TOWNSHIP Index Map

| | | |
|-------|-------|-------|
| 35026 | 35027 | 35028 |
| 35038 | 35037 | 35029 |
| 35048 | 35049 | 35050 |
| 35109 | 35108 | 35107 |



35027

35028

35038

35037

35029

35048

35049

35050