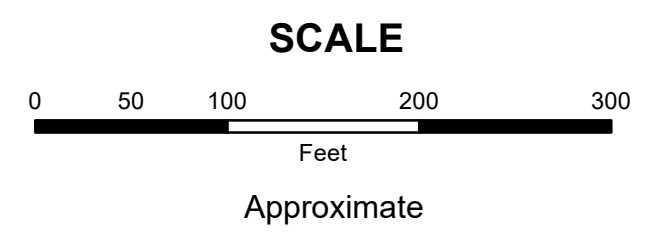


MAHONING COUNTY
OHIO
BOARDMAN TOWNSHIP
Great Lot 17 Division 4

TAX MAP
29011

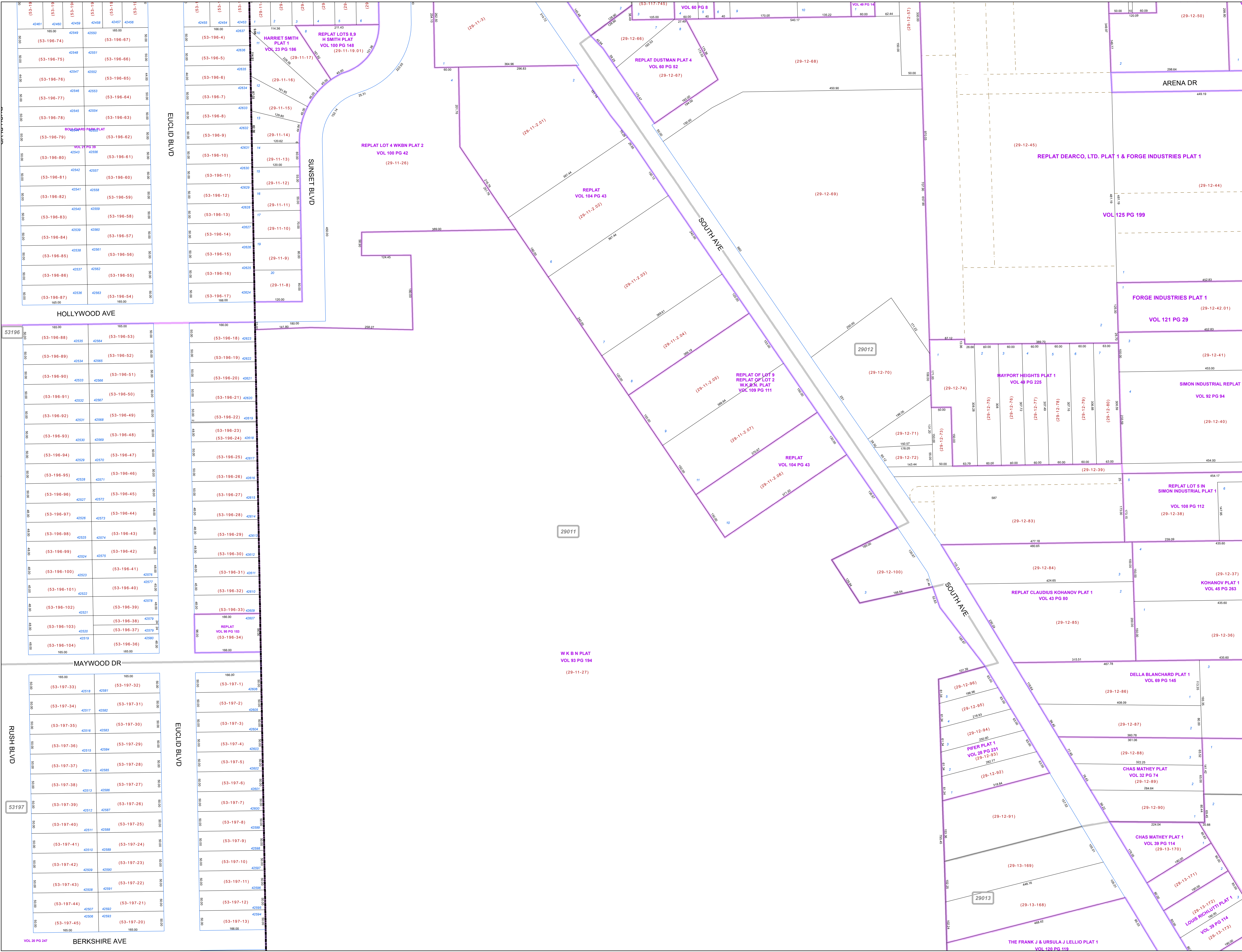
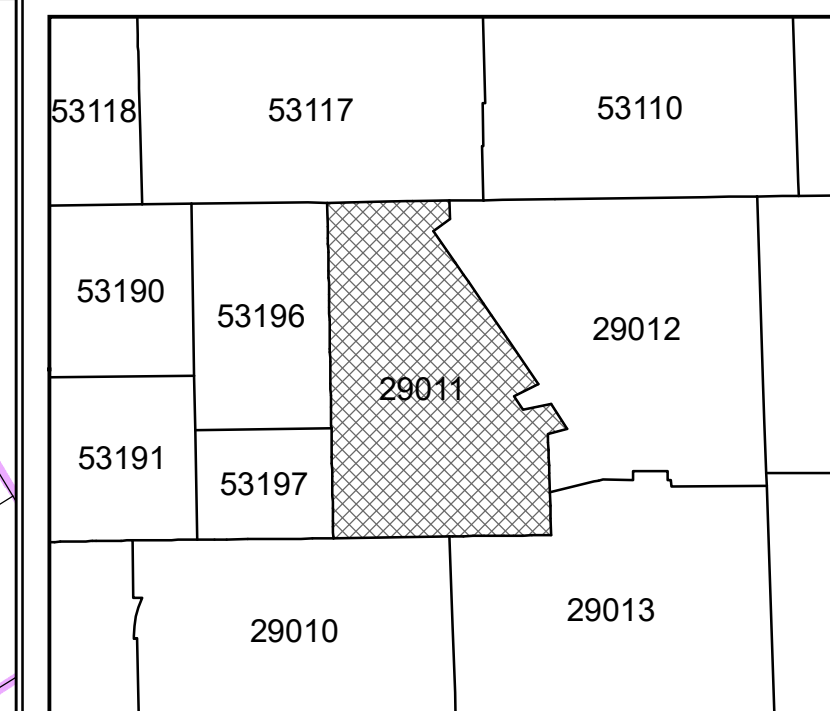


Print Date 1/14/2019

LEGEND

- COUNTY LINE
- TOWNSHIP LINE
- CITY LINE
- VILLAGE LINE
- PLAT OUTLINE
- PARCEL LINE
- OLD PARCEL LINE
- PHASE LINE
- ROAD ROW LINE
- RAILROAD ROW LINE
- (01-20-1.03) PARCEL ID NUMBER
- 345 LOT NUMBER
- BELL PLAT 1 PLAT NAME
- 01004 TAX MAP NUMBER

BOARDMAN TOWNSHIP
Index Map



29011

29012

29013

VOL 28 PG 247 BERKSHIRE AVE

W K B N PLAT VOL 83 PG 194 (29-11-27)

THE FRANK J & URSULA J LELLIO PLAT 1 VOL 120 PG 119

LOUIS REHL PLAT 1 VOL 39 PG 114 (29-13-172)

CHAS MATHEY PLAT 1 VOL 39 PG 114 (29-13-170)

CHAS MATHEY PLAT VOL 32 PG 74 (29-12-88)

DELLA BLANCHARD PLAT 1 VOL 89 PG 145 (29-12-86)

REPLAT LOT 5 IN SIMON INDUSTRIAL PLAT 1 VOL 108 PG 112 (29-12-36)

REPLAT CLAUDIUS KOHANOV PLAT 1 VOL 43 PG 80 (29-12-84)

REPLAT LOT 5 IN SIMON INDUSTRIAL PLAT 1 VOL 92 PG 94 (29-12-40)

FORGE INDUSTRIES PLAT 1 VOL 121 PG 29 (29-12-42.01)

REPLAT DEARCO, LTD. PLAT 1 & FORGE INDUSTRIES PLAT 1 VOL 125 PG 199 (29-12-44)

REPLAT DUSTMAN PLAT 4 VOL 60 PG 52 (29-12-67)

REPLAT OF LOT 9 REPLAT OF LOT 2 W K B N PLAT VOL 109 PG 111 (29-11-2.05)

REPLAT VOL 104 PG 43 (29-11-2.06)

REPLAT VOL 104 PG 43 (29-11-2.07)

REPLAT (29-11-2.08)

REPLAT (29-11-2.09)

REPLAT (29-11-2.04)

REPLAT (29-11-2.03)

REPLAT (29-11-2.02)

REPLAT (29-11-2.01)

REPLAT (29-11-17)

REPLAT LOTS 8,9 H SMITH PLAT VOL 100 PG 148 (29-11-19.01)

HARRET SMITH PLAT 1 VOL 23 PG 186 (29-11-11)

REPLAT (29-11-16)

REPLAT (29-11-15)

REPLAT (29-11-14)

REPLAT (29-11-13)

REPLAT (29-11-12)

REPLAT (29-11-11)

REPLAT (29-11-10)

REPLAT (29-11-9)

REPLAT (29-11-8)

REPLAT (29-11-7)

REPLAT (29-11-6)

REPLAT (29-11-5)

REPLAT (29-11-4)

REPLAT (29-11-3)

REPLAT (29-11-2)

REPLAT (29-11-1)

REPLAT (29-11-0)

REPLAT (29-11-0)

REPLAT (29-11-0)

REPLAT (29-11-0)

REPLAT (29-11-0)

REPLAT (29-11-0)

REPLAT (29-11-0)

REPLAT (29-11-0)

REPLAT (29-11-0)

REPLAT (29-11-0)

REPLAT (29-11-0)

REPLAT (29-11-0)

REPLAT (29-11-0)

REPLAT (29-11-0)

REPLAT (29-11-0)

REPLAT (29-11-0)

REPLAT (29-11-0)

REPLAT (29-11-0)

REPLAT (29-11-0)

REPLAT (29-11-0)

REPLAT (29-11-0)

REPLAT (29-11-0)

REPLAT (29-11-0)

REPLAT (29-11-0)

REPLAT (29-11-0)

REPLAT (29-11-0)

REPLAT (29-11-0)

VOL 28 PG 247 BERKSHIRE AVE

W K B N PLAT VOL 83 PG 194 (29-11-27)

29013

LOUIS REHL PLAT 1 VOL 39 PG 114 (29-13-172)

CHAS MATHEY PLAT 1 VOL 39 PG 114 (29-13-170)

CHAS MATHEY PLAT VOL 32 PG 74 (29-12-88)

DELLA BLANCHARD PLAT 1 VOL 89 PG 145 (29-12-86)

REPLAT LOT 5 IN SIMON INDUSTRIAL PLAT 1 VOL 108 PG 112 (29-12-36)

REPLAT CLAUDIUS KOHANOV PLAT 1 VOL 43 PG 80 (29-12-84)

REPLAT LOT 5 IN SIMON INDUSTRIAL PLAT 1 VOL 92 PG 94 (29-12-40)

FORGE INDUSTRIES PLAT 1 VOL 121 PG 29 (29-12-42.01)

REPLAT DEARCO, LTD. PLAT 1 & FORGE INDUSTRIES PLAT 1 VOL 125 PG 199 (29-12-44)

REPLAT DUSTMAN PLAT 4 VOL 60 PG 52 (29-12-67)

REPLAT OF LOT 9 REPLAT OF LOT 2 W K B N PLAT VOL 109 PG 111 (29-11-2.05)

REPLAT VOL 104 PG 43 (29-11-2.06)

REPLAT VOL 104 PG 43 (29-11-2.07)

REPLAT (29-11-2.08)

REPLAT (29-11-2.09)

REPLAT (29-11-2.04)

REPLAT (29-11-2.03)

REPLAT (29-11-2.02)

REPLAT (29-11-2.01)

REPLAT (29-11-17)

REPLAT LOTS 8,9 H SMITH PLAT VOL 100 PG 148 (29-11-19.01)

HARRET SMITH PLAT 1 VOL 23 PG 186 (29-11-11)

REPLAT (29-11-16)

REPLAT (29-11-15)

REPLAT (29-11-14)

REPLAT (29-11-13)

REPLAT (29-11-12)

REPLAT (29-11-11)

REPLAT (29-11-10)

REPLAT (29-11-9)

REPLAT (29-11-8)

REPLAT (29-11-7)

REPLAT (29-11-6)

REPLAT (29-11-5)

REPLAT (29-11-4)

REPLAT (29-11-3)

REPLAT (29-11-2)

REPLAT (29-11-1)

REPLAT (29-11-0)

REPLAT (29-11-0)

REPLAT (29-11-0)

REPLAT (29-11-0)

REPLAT (29-11-0)

REPLAT (29-11-0)

REPLAT (29-11-0)

REPLAT (29-11-0)

REPLAT (29-11-0)

REPLAT (29-11-0)

REPLAT (29-11-0)

REPLAT (29-11-0)

REPLAT (29-11-0)

REPLAT (29-11-0)

REPLAT (29-11-0)

REPLAT (29-11-0)

REPLAT (29-11-0)

REPLAT (29-11-0)

REPLAT (29-11-0)

REPLAT (29-11-0)

REPLAT (29-11-0)

REPLAT (29-11-0)

REPLAT (29-11-0)

REPLAT (29-11-0)

REPLAT (29-11-0)

REPLAT (29-11-0)

REPLAT (29-11-0)

VOL 28 PG 247 BERKSHIRE AVE

W K B N PLAT VOL 83 PG 194 (29-11-27)

29013

LOUIS REHL PLAT 1 VOL 39 PG 114 (29-13-172)

CHAS MATHEY PLAT 1 VOL 39 PG 114 (29-13-170)

CHAS MATHEY PLAT VOL 32 PG 74 (29-12-88)

DELLA BLANCHARD PLAT 1 VOL 89 PG 145 (29-12-86)

REPLAT LOT 5 IN SIMON INDUSTRIAL PLAT 1 VOL 108 PG 112 (29-12-36)

REPLAT CLAUDIUS KOHANOV PLAT 1 VOL 43 PG 80 (29-12-84)

REPLAT LOT 5 IN SIMON INDUSTRIAL PLAT 1 VOL 92 PG 94 (29-12-40)

FORGE INDUSTRIES PLAT 1 VOL 121 PG 29 (29-12-42.01)

REPLAT DEARCO, LTD. PLAT 1 & FORGE INDUSTRIES PLAT 1 VOL 125 PG 199 (29-12-44)

REPLAT DUSTMAN PLAT 4 VOL 60 PG 52 (29-12-67)

REPLAT OF LOT 9 REPLAT OF LOT 2 W K B N PLAT VOL 109 PG 111 (29-11-2.05)

REPLAT VOL 104 PG 43 (29-11-2.06)

REPLAT VOL 104 PG 43 (29-11-2.07)

REPLAT (29-11-2.08)

REPLAT (29-11-2.09)

REPLAT (29-11-2.04)

REPLAT (29-11-2.03)

REPLAT (29-11-2.02)

REPLAT (29-11-2.01)

REPLAT (29-11-17)

REPLAT LOTS 8,9 H SMITH PLAT VOL 100 PG 148 (29-11-19.01)

HARRET SMITH PLAT 1 VOL 23 PG 186 (29-11-11)

REPLAT (29-11-16)

REPLAT (29-11-15)

REPLAT (29-11-14)

REPLAT (29-11-13)

REPLAT (29-11-12)

REPLAT (29-11-11)

REPLAT (29-11-10)

REPLAT (29-11-9)

REPLAT (29-11-8)

REPLAT (29-11-7)

REPLAT (29-11-6)

REPLAT (29-11-5)

REPLAT (29-11-4)

REPLAT (29-11-3)

REPLAT (29-11-2)

REPLAT (29-11-1)

REPLAT (29-11-0)

REPLAT (29-11-0)

REPLAT (29-11-0)

REPLAT (29-11-0)

REPLAT (29-11-0)

REPLAT (29-11-0)

REPLAT (29-11-0)

REPLAT (29-11-0)

REPLAT (29-11-0)

REPLAT (29-11-0)

REPLAT (29-11-0)

REPLAT (29-11-0)

REPLAT (29-11-0)

REPLAT (29-11-0)

REPLAT (29-11-0)

REPLAT (29-11-0)

REPLAT (29-11-0)

REPLAT (29-11-0)

REPLAT (29-11-0)

REPLAT (29-11-0)

REPLAT (29-11-0)

REPLAT (29-11-0)

REPLAT (29-11-0)

REPLAT (29-11-0)

REPLAT (29-11-0)

REPLAT (29-11-0)

REPLAT (29-11-0)

VOL 28 PG 247 BERKSHIRE AVE

W K B N PLAT VOL 83 PG 194 (29-11-27)

29013

LOUIS REHL PLAT 1 VOL 39 PG 114 (29-13-172)

CHAS MATHEY PLAT 1 VOL 39 PG 114 (29-13-170)

CHAS MATHEY PLAT VOL 32 PG 74 (29-12-88)

DELLA BLANCHARD PLAT 1 VOL 89 PG 145 (29-12-86)

REPLAT LOT 5 IN SIMON INDUSTRIAL PLAT 1 VOL 108 PG 112 (29-12-36)

REPLAT CLAUDIUS KOHANOV PLAT 1 VOL 43 PG 80 (29-12-84)

REPLAT LOT 5 IN SIMON INDUSTRIAL PLAT 1 VOL 92 PG 94 (29