

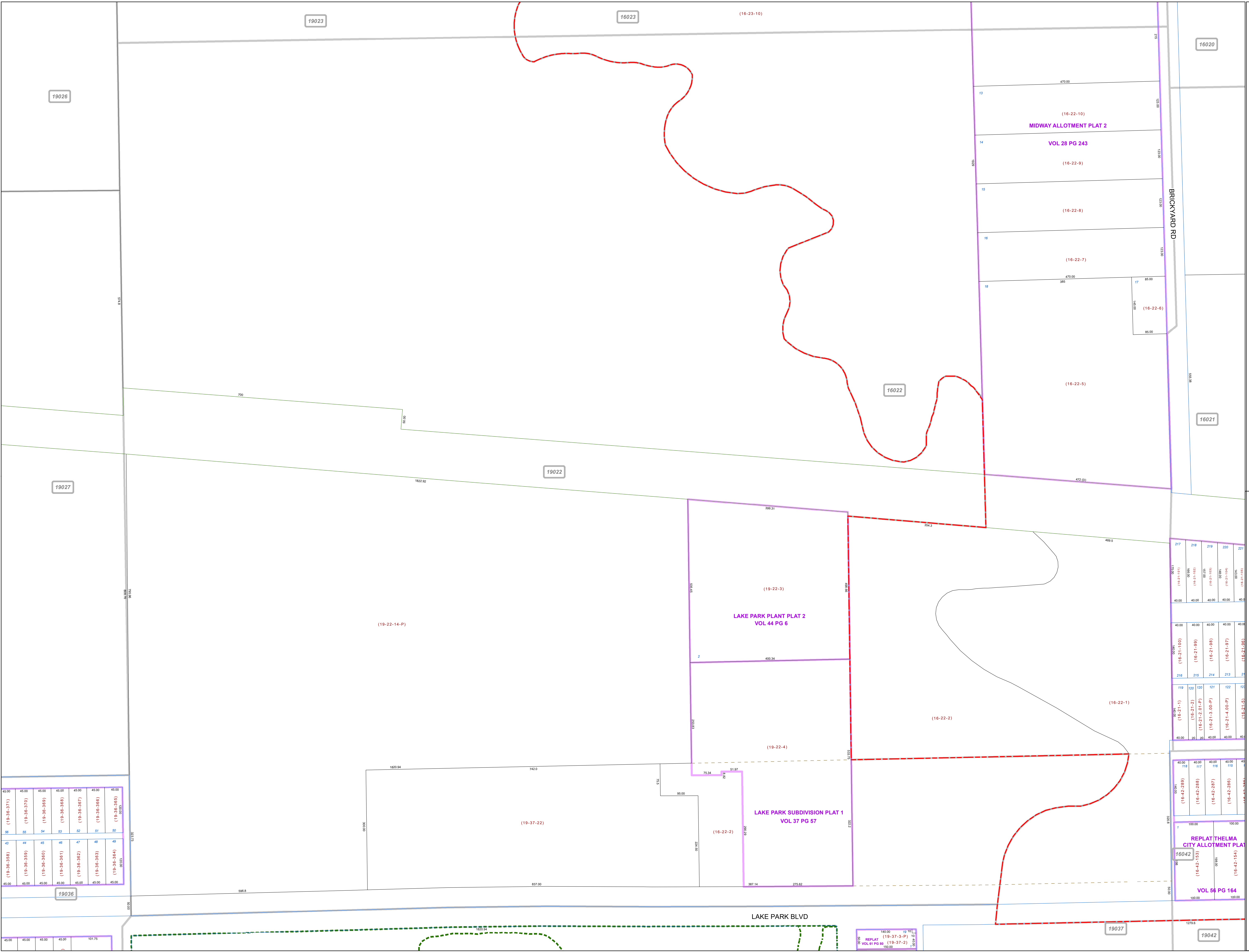
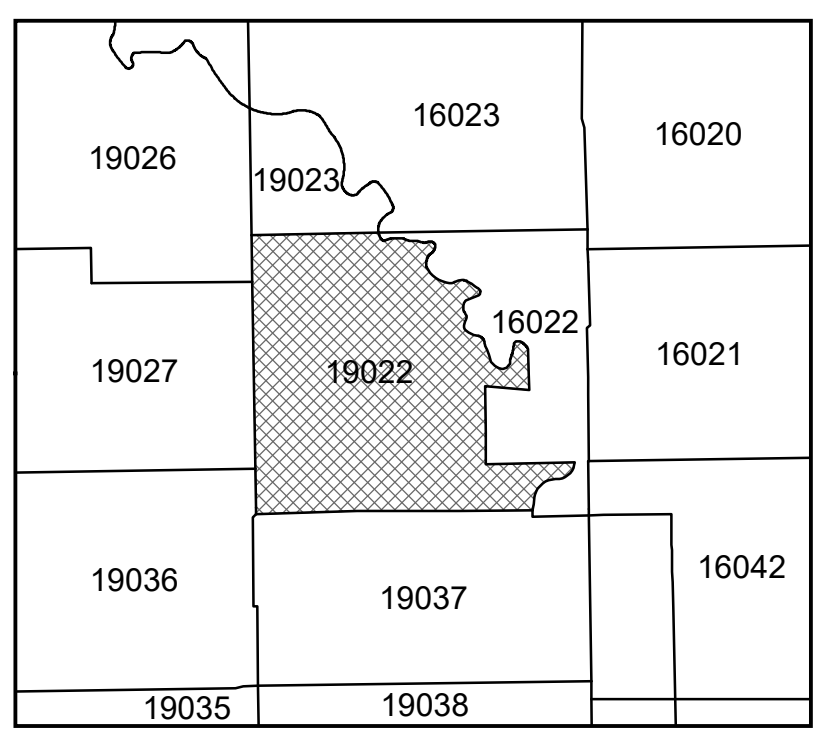
MAHONING COUNTY
OHIO
SMITH TOWNSHIP
Section 29
TAX MAP
19022



Print Date 1/14/2019

- LEGEND**
- COUNTY LINE
 - TOWNSHIP LINE
 - CITY LINE
 - VILLAGE LINE
 - PLAT OUTLINE
 - PARCEL LINE
 - OLD PARCEL LINE
 - PHASE LINE
 - ROAD ROW LINE
 - RAILROAD ROW LINE
 - (01-20-1.03) PARCEL ID NUMBER
 - 345 LOT NUMBER
 - BELL PLAT 1 PLAT NAME
 - 01004 TAX MAP NUMBER

SMITH TOWNSHIP
Index Map



19026

19023

16023

(16-23-10)

16020

19027

19022

16022

16021

19036

19037

19042

REPLAT
 VOL 51 PG 80 (19-37-2)
 150.00

REPLAT HELMA
 CITY ALLOTMENT PLAT
 VOL 56 PG 164
 100.00

LAKE PARK SUBDIVISION PLAT 1
 VOL 37 PG 67
 100.00

LAKE PARK PLANT PLAT 2
 VOL 44 PG 6
 100.00

MIDWAY ALLOTMENT PLAT 2
 VOL 28 PG 243
 100.00