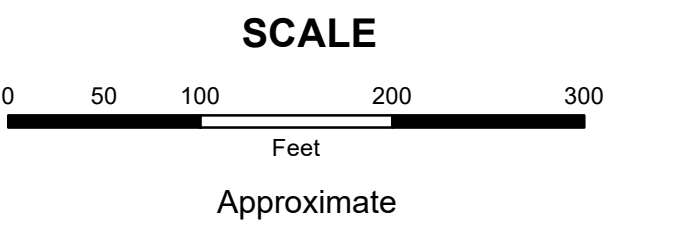


MAHONING COUNTY OHIO SMITH TOWNSHIP Section 31

TAX MAP 18032

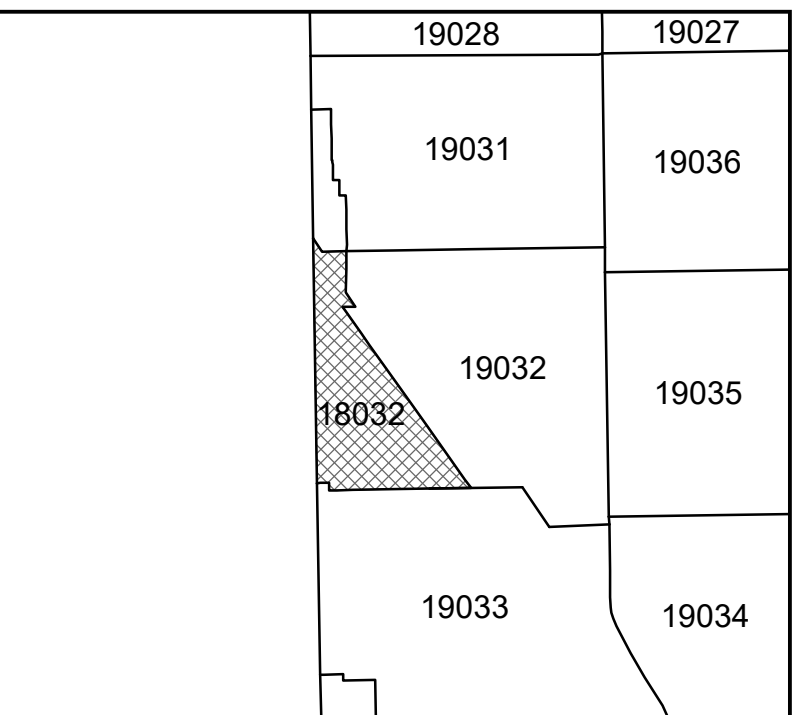


Print Date 1/14/2019

LEGEND

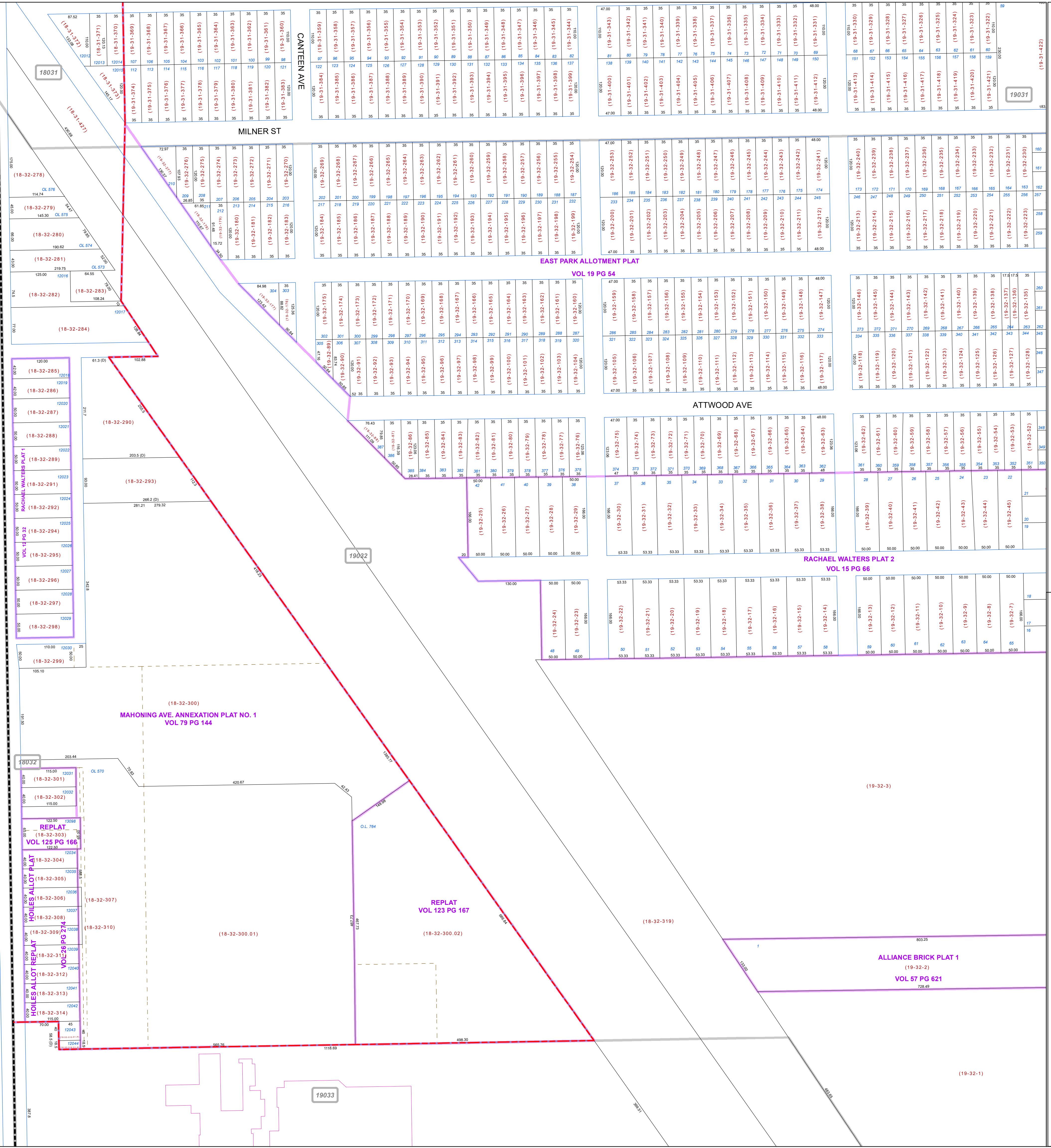
- COUNTY LINE
- TOWNSHIP LINE
- CITY LINE
- VILLAGE LINE
- PLAT OUTLINE
- PARCEL LINE
- OLD PARCEL LINE
- PHASE LINE
- ROAD ROW LINE
- RAILROAD ROW LINE
- (01-20-1.03) PARCEL ID NUMBER
- 345 LOT NUMBER
- BELL PLAT 1 PLAT NAME
- 01004 TAX MAP NUMBER

SMITH TOWNSHIP Index Map



STARK COUNTY

S MAHONING AVE



19031

19022

19033

18031

19031