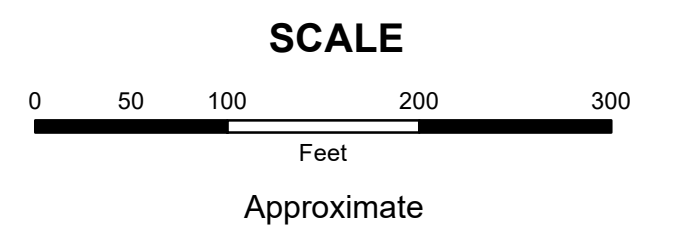


MAHONING COUNTY
OHIO
SMITH TOWNSHIP
 Section 31

TAX MAP
18031

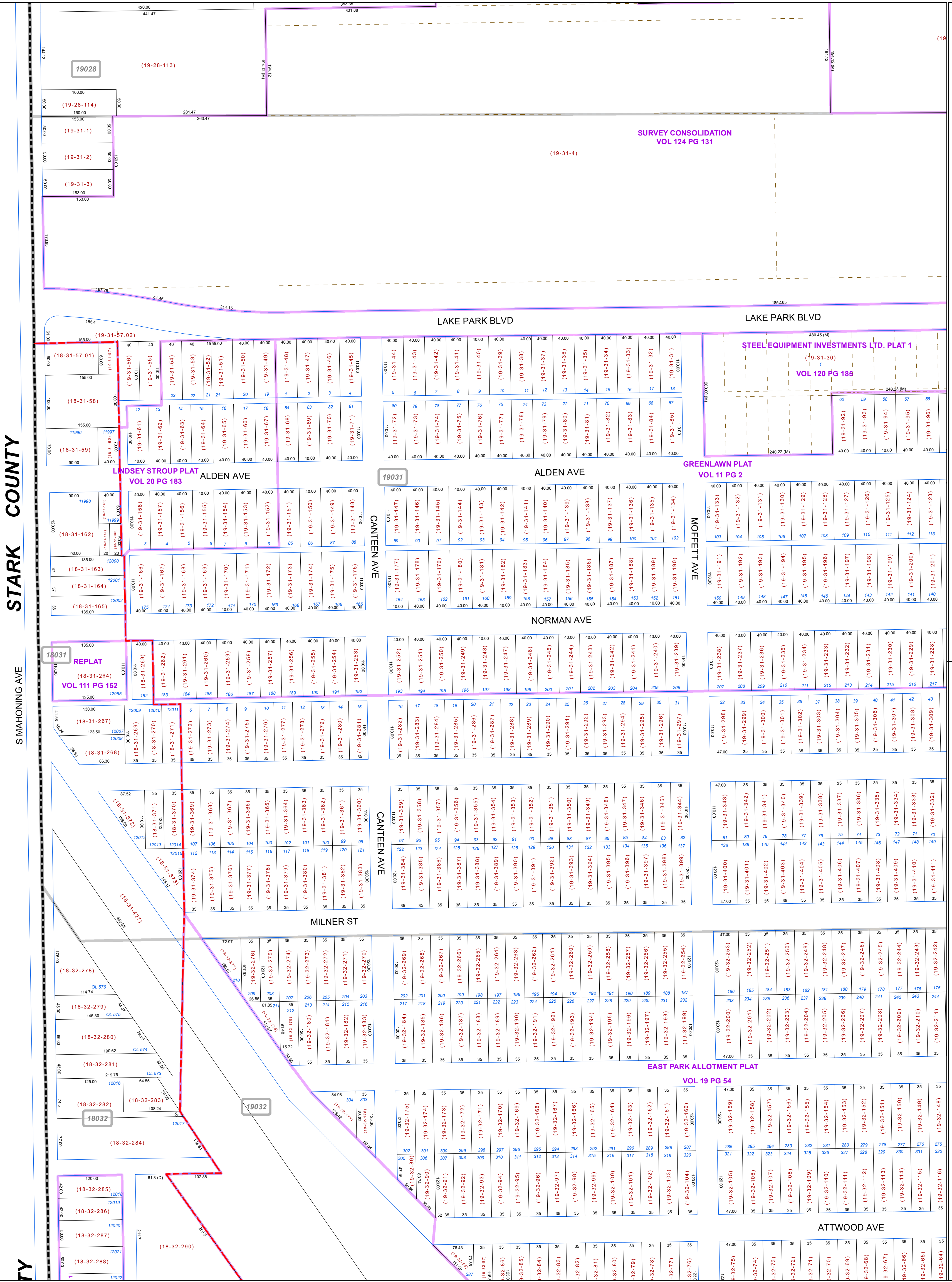
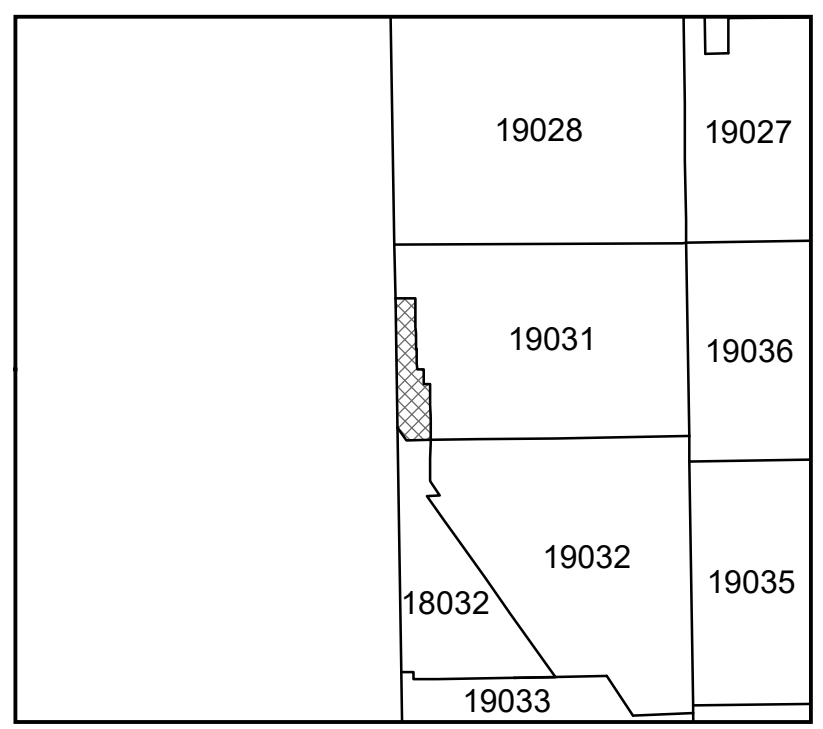


Print Date 1/14/2019

LEGEND

- COUNTY LINE
- TOWNSHIP LINE
- CITY LINE
- VILLAGE LINE
- PLAT OUTLINE
- PARCEL LINE
- OLD PARCEL LINE
- PHASE LINE
- ROAD ROW LINE
- RAILROAD ROW LINE
- PARCEL ID NUMBER
- LOT NUMBER
- PLAT NAME
- TAX MAP NUMBER

SMITH TOWNSHIP
Index Map



STARK COUNTY

MAHONING AVE

TY