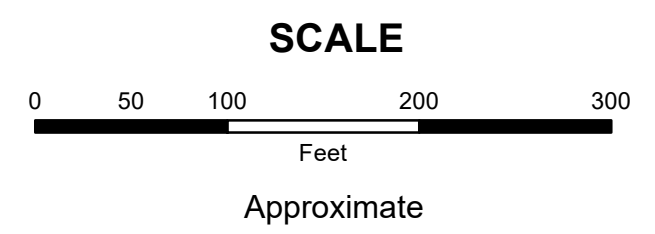


**MAHONING COUNTY**  
**OHIO**  
**SMITH TOWNSHIP**  
 Section 26  
**TAX MAP**  
**17007**

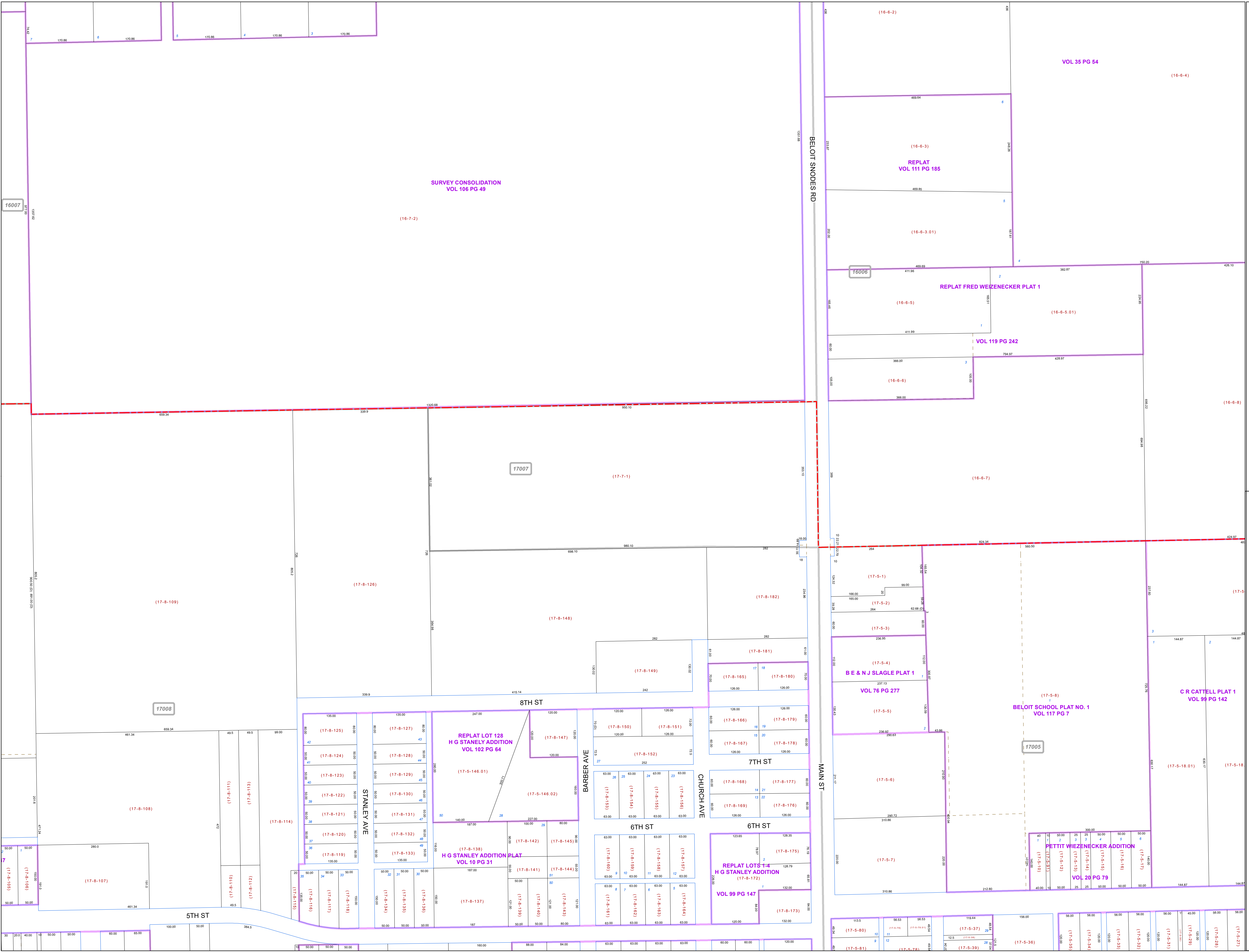


Print Date 1/14/2019

- LEGEND**
- COUNTY LINE
  - TOWNSHIP LINE
  - CITY LINE
  - VILLAGE LINE
  - PLAT OUTLINE
  - PARCEL LINE
  - OLD PARCEL LINE
  - PHASE LINE
  - ROAD ROW LINE
  - RAILROAD ROW LINE
  - (01-20-1.03) PARCEL ID NUMBER
  - 345 LOT NUMBER
  - BELL PLAT 1 PLAT NAME
  - 01004 TAX MAP NUMBER

**SMITH TOWNSHIP**  
**Index Map**

16078	16073	16072
	16007	16006
	17007	
17011	17008	17005
	16055	16004
16010	16055	16004



7	6	5	4	3
170.86	170.86	170.86	170.86	170.86

16007

SURVEY CONSOLIDATION  
 VOL 106 PG 49

VOL 35 PG 54

REPLAT  
 VOL 111 PG 185

REPLAT FRED WEIZENECKER PLAT 1

VOL 119 PG 242

17007

16006

17008

17005

01004

7

30

20.0

40.0

14

50.00

50.00

50.00

50.00

384.5

50.00

50.00

50.00

50.00

50.00

50.00

50.00

50.00

50.00

50.00

50.00

50.00

50.00

50.00

50.00

50.00

50.00

50.00

50.00

50.00

50.00

50.00

50.00

50.00

50.00

50.00

50.00

50.00

50.00

50.00

50.00

50.00

50.00

50.00

50.00

50.00

50.00

50.00

50.00

50.00

50.00