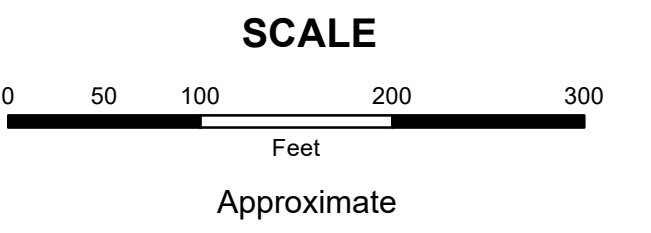


PORTAGE COUNTY

MAHONING COUNTY
OHIO
SMITH TOWNSHIP
Section 2

TAX MAP
16201



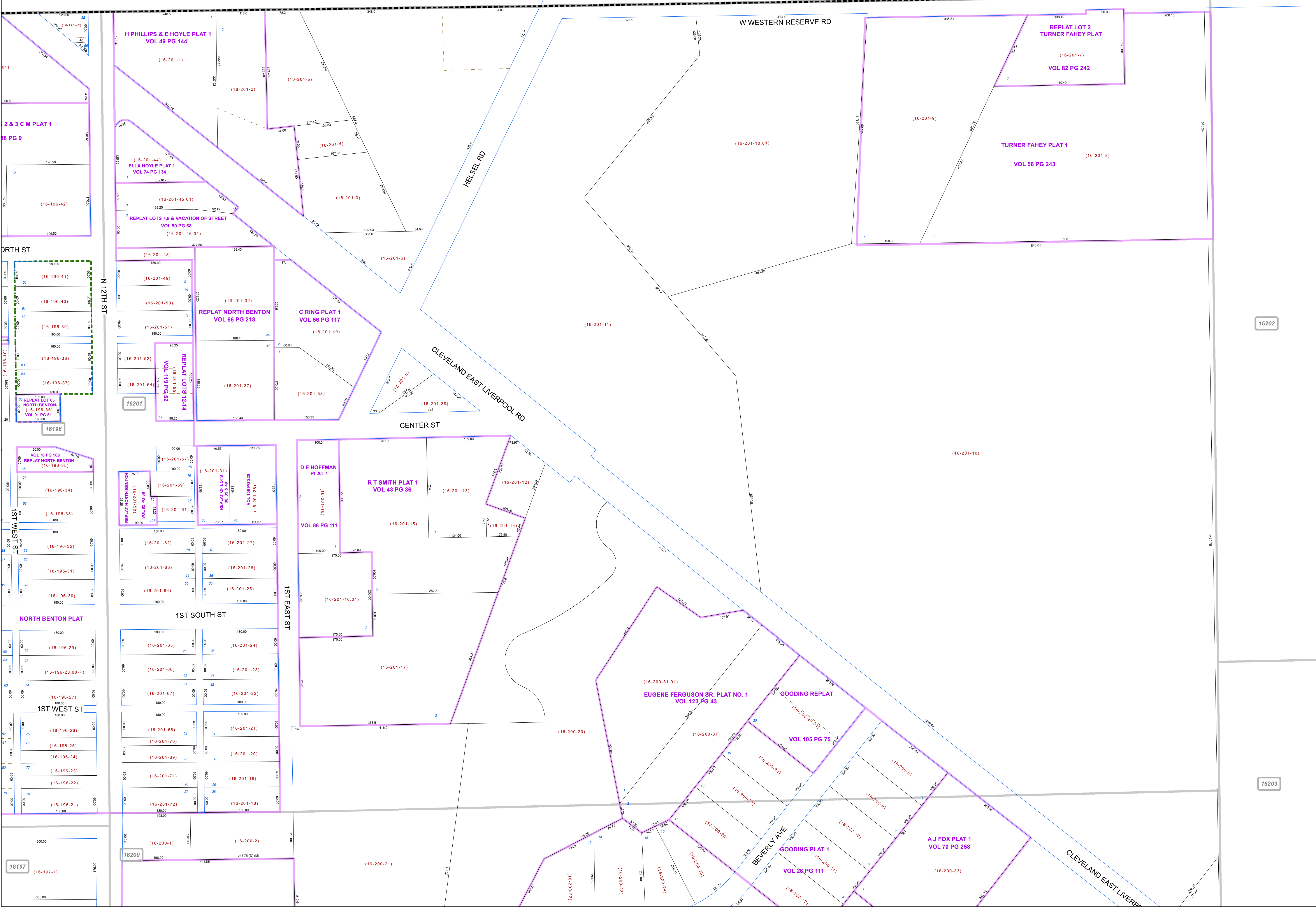
Print Date 1/14/2019

LEGEND

- COUNTY LINE
- TOWNSHIP LINE
- CITY LINE
- VILLAGE LINE
- PLAT OUTLINE
- PARCEL LINE
- OLD PARCEL LINE
- PHASE LINE
- ROAD ROW LINE
- RAILROAD ROW LINE
- PARCEL ID NUMBER
- LOT NUMBER
- PLAT NAME
- TAX MAP NUMBER

SMITH TOWNSHIP
Index Map

		22041
16196	16201	16202
16197	16200	16203
16198	16199	16204



16202

16203

16201

16200

16196

16197

16198

16199

16204