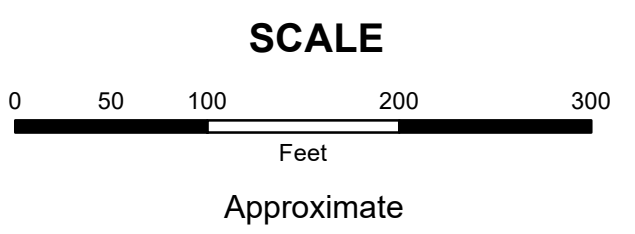


MAHONING COUNTY
OHIO
SMITH TOWNSHIP
Section 3

TAX MAP
16195

PORTAGE COUNTY

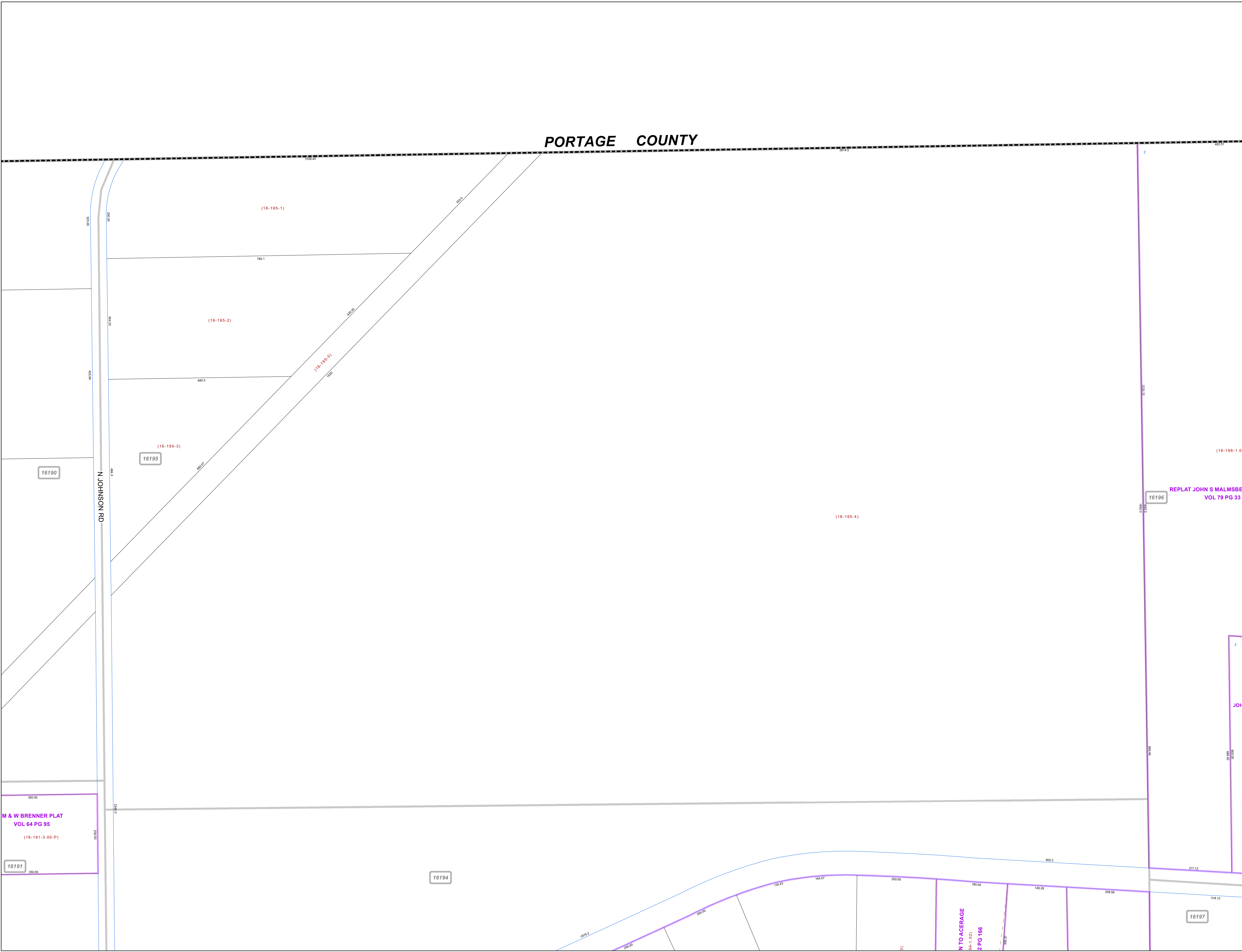
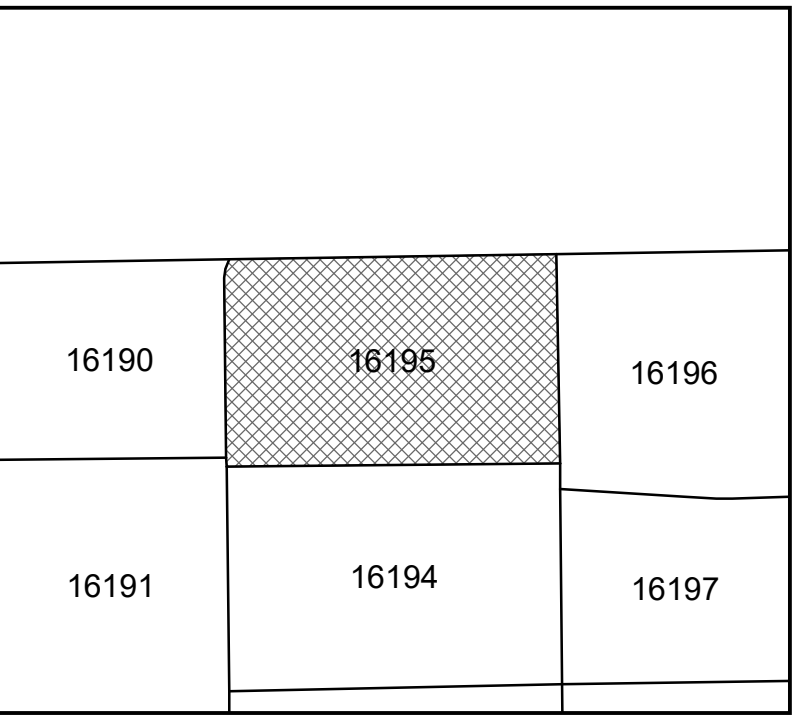


Print Date 1/14/2019

LEGEND

- COUNTY LINE
- TOWNSHIP LINE
- CITY LINE
- VILLAGE LINE
- PLAT OUTLINE
- PARCEL LINE
- OLD PARCEL LINE
- PHASE LINE
- ROAD ROW LINE
- RAILROAD ROW LINE
- (01-20-1.03) PARCEL ID NUMBER
- 345 LOT NUMBER
- BELL PLAT 1 PLAT NAME
- 01004 TAX MAP NUMBER

SMITH TOWNSHIP
Index Map



M & W BRENNER PLAT
 VOL 64 PG 95
 (16-191-3.00-P)

REPLAT JOHN S MALMSBERG
 VOL 79 PG 33

INTO ACERAGE
 16-1-1.02
 2 PG 166