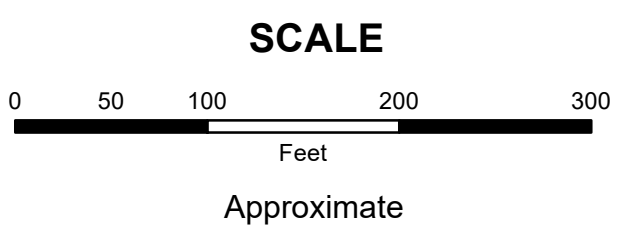


**MAHONING COUNTY
OHIO**
SMITH TOWNSHIP
Section 3
**TAX MAP
16194**



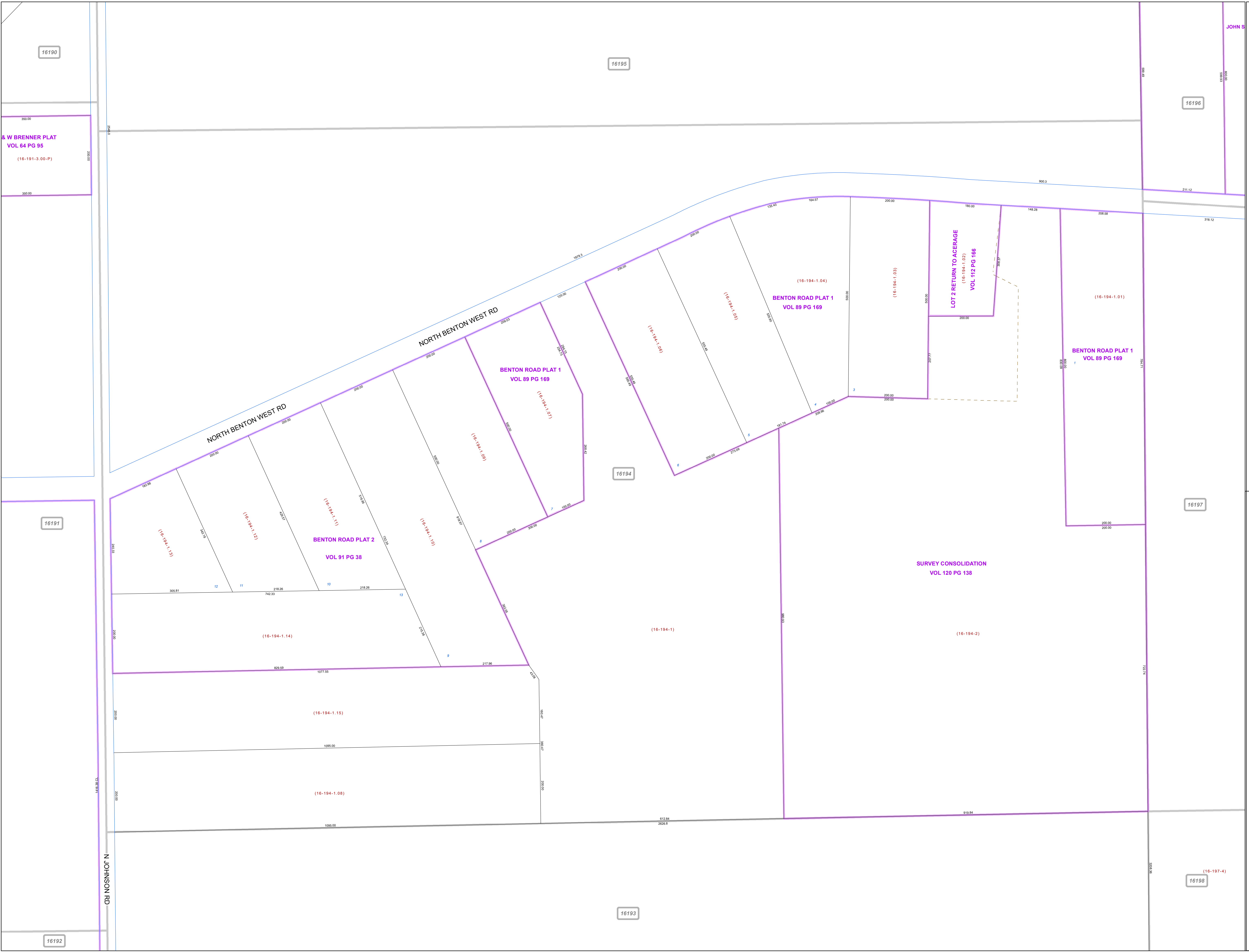
Print Date 1/14/2019

LEGEND

- COUNTY LINE
- TOWNSHIP LINE
- CITY LINE
- VILLAGE LINE
- PLAT OUTLINE
- PARCEL LINE
- OLD PARCEL LINE
- PHASE LINE
- ROAD ROW LINE
- RAILROAD ROW LINE
- (01-20-1.03) PARCEL ID NUMBER
- 345 LOT NUMBER
- BELL PLAT 1 PLAT NAME
- 01004 TAX MAP NUMBER

**SMITH TOWNSHIP
Index Map**

16190	16195	16196
16191	16194	16197
16192	16193	16198



16190

16195

16196

JOHN S

**& W BRENNER PLAT
VOL 64 PG 95**
(16-191-3.00-P)

16191

16194

16197

NORTH BENTON WEST RD

NORTH BENTON WEST RD

**BENTON ROAD PLAT 1
VOL 89 PG 169**

**BENTON ROAD PLAT 1
VOL 89 PG 169**

**BENTON ROAD PLAT 1
VOL 89 PG 169**

**BENTON ROAD PLAT 2
VOL 91 PG 38**

**SURVEY CONSOLIDATION
VOL 120 PG 138**

16198

16192

16193

N JOHNSON RD