

PORTAGE COUNTY

MAHONING COUNTY

OHIO

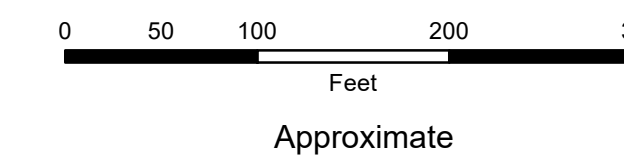
SMITH TOWNSHIP

Section 6

TAX MAP
16177



SCALE

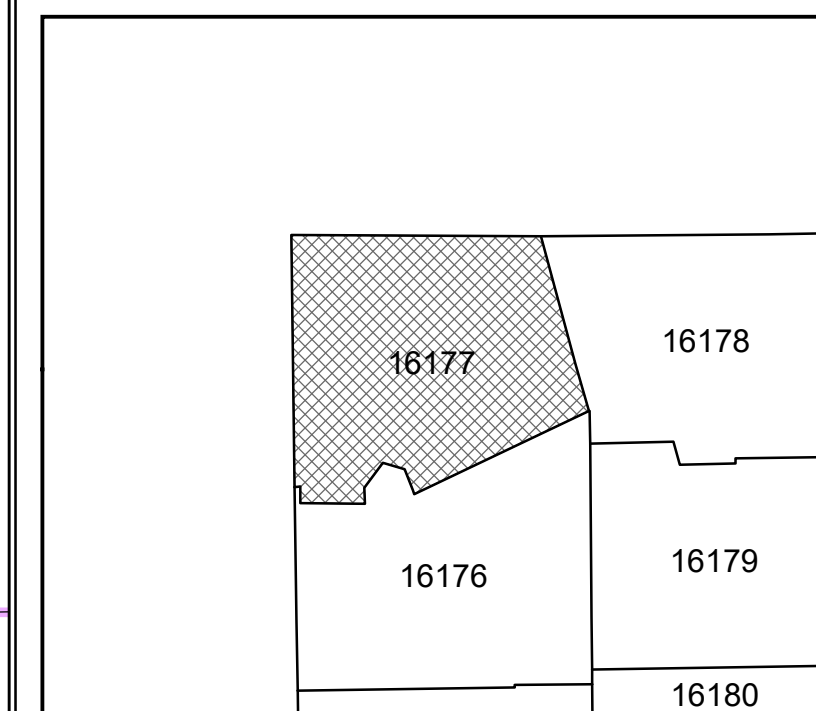


Print Date 1/14/2019

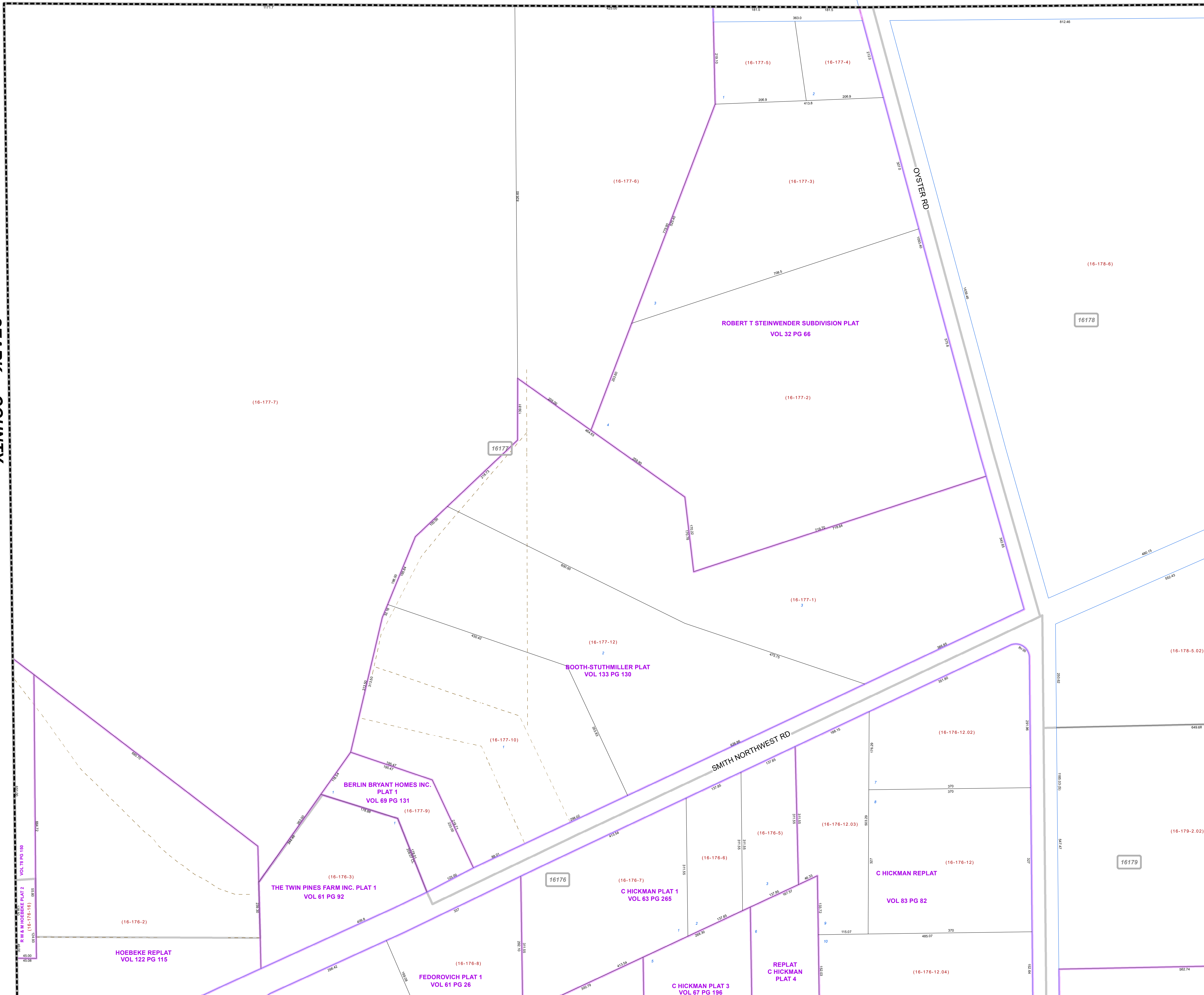
LEGEND

- COUNTY LINE
- TOWNSHIP LINE
- CITY LINE
- VILLAGE LINE
- PLAT OUTLINE
- PARCEL LINE
- OLD PARCEL LINE
- PHASE LINE
- ROAD ROW LINE
- RAILROAD ROW LINE
- (01-20-1.03) PARCEL ID NUMBER
- 345 LOT NUMBER
- BELL PLAT 1 PLAT NAME
- 01004 TAX MAP NUMBER

SMITH TOWNSHIP
Index Map



STARK COUNTY



(16-177-6)

(16-177-3)

(16-178-6)

(16-177-7)

16177

ROBERT T STEINWENDER SUBDIVISION PLAT
VOL 32 PG 66

(16-177-2)

(16-177-1)

BOOTH-STUTHMILLER PLAT
VOL 133 PG 130

(16-177-12)

(16-177-10)

BERLIN BRYANT HOMES INC.
PLAT 1
VOL 69 PG 131

(16-177-9)

THE TWIN PINES FARM INC. PLAT 1
VOL 61 PG 92

(16-176-3)

HOEBEKE REPLAT
VOL 122 PG 115

(16-176-2)

FEDOROVICH PLAT 1
VOL 61 PG 26

(16-176-8)

C HICKMAN PLAT 1
VOL 63 PG 265

(16-176-7)

C HICKMAN PLAT 3
VOL 67 PG 196

(16-176-5)

C HICKMAN REPLAT
VOL 83 PG 82

(16-176-12.02)

(16-176-4)

(16-176-12.03)

(16-176-12)

(16-176-12.04)

(16-178-5.02)

(16-179-2.02)

16176

16179