

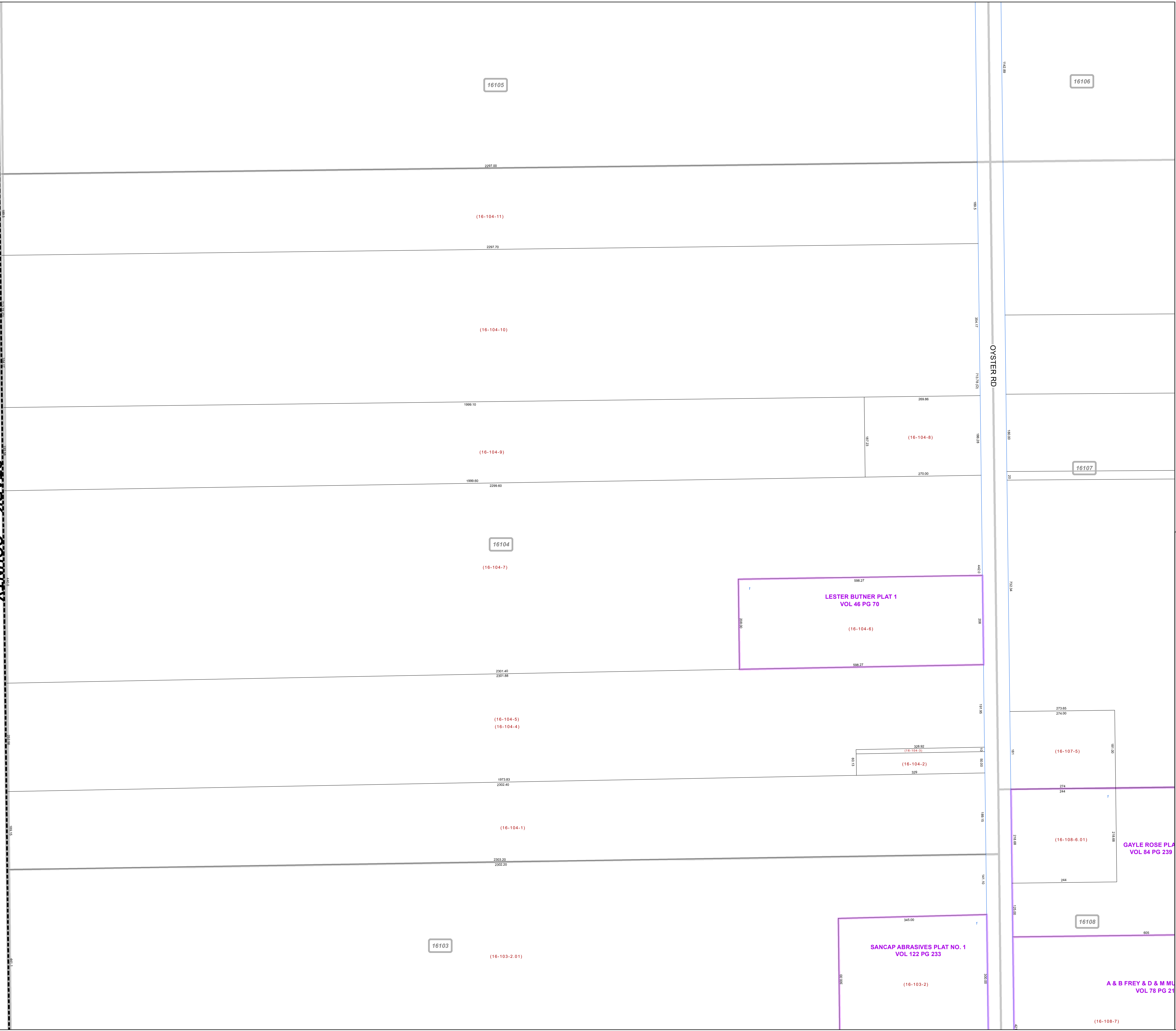
**MAHONING COUNTY
OHIO
SMITH TOWNSHIP
Section 18**

**TAX MAP
16104**



Print Date 1/14/2019

STARK COUNTY



- LEGEND**
- COUNTY LINE
 - TOWNSHIP LINE
 - CITY LINE
 - VILLAGE LINE
 - PLAT OUTLINE
 - PARCEL LINE
 - OLD PARCEL LINE
 - PHASE LINE
 - ROAD ROW LINE
 - RAILROAD ROW LINE
 - (01-20-1.03) PARCEL ID NUMBER
 - 345 LOT NUMBER
 - BELL PLAT 1 PLAT NAME
 - 01004 TAX MAP NUMBER

**SMITH TOWNSHIP
Index Map**

