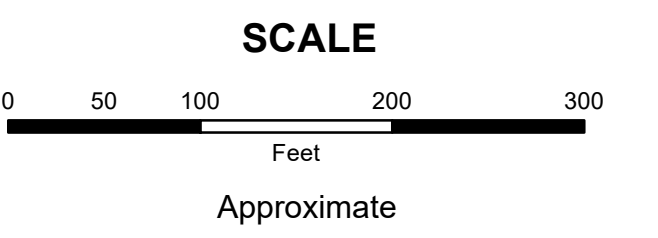


**MAHONING COUNTY**  
**OHIO**  
**SMITH TOWNSHIP**  
 Section 19

**TAX MAP**  
**16101**

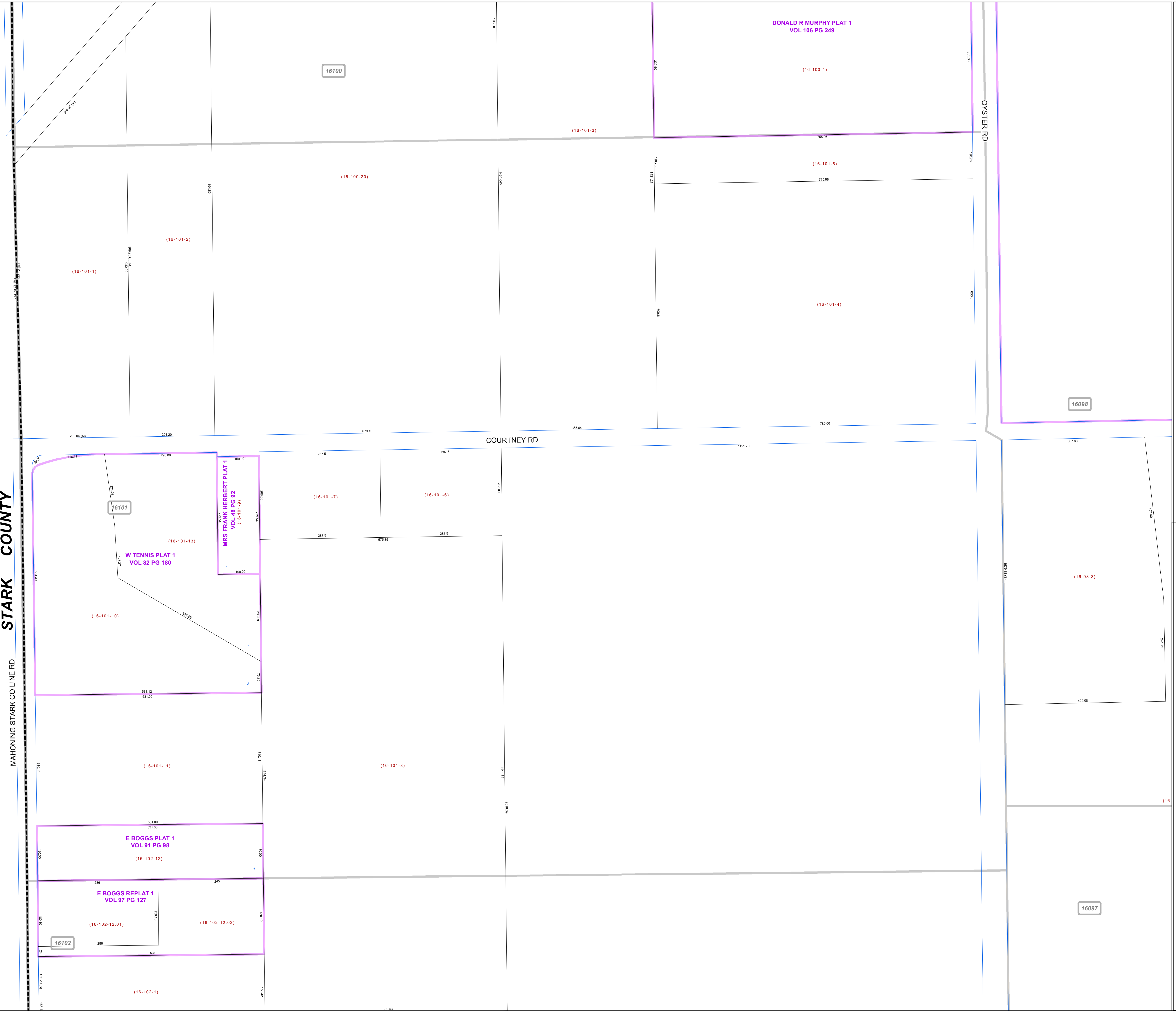
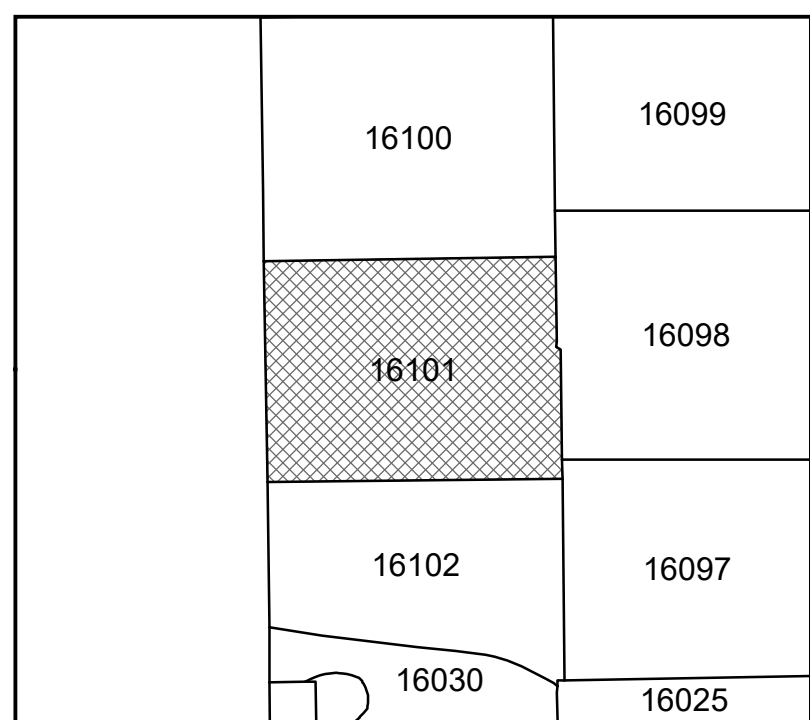


Print Date 1/14/2019

**LEGEND**

- COUNTY LINE
- TOWNSHIP LINE
- CITY LINE
- VILLAGE LINE
- PLAT OUTLINE
- PARCEL LINE
- OLD PARCEL LINE
- PHASE LINE
- ROAD ROW LINE
- RAILROAD ROW LINE
- (01-20-1.03) PARCEL ID NUMBER
- 345 LOT NUMBER
- BELL PLAT 1 PLAT NAME
- 01004 TAX MAP NUMBER

**SMITH TOWNSHIP**  
 Index Map



**STARK COUNTY**

MAHONING STARK CO LINE RD

COURTNEY RD

OYSTER RD

16100

(16-100-20)

(16-101-1)

(16-101-2)

(16-101-3)

(16-101-4)

(16-101-5)

(16-101-6)

(16-101-7)

(16-101-8)

(16-101-10)

(16-101-11)

(16-101-13)

(16-102-1)

(16-102-12)

(16-102-12.01)

(16-102-12.02)

(16-98-3)

16098

16097

16102

16101

16100

16099

16098

16097

16030

16025

DONALD R MURPHY PLAT 1  
 VOL 106 PG 249

W TENNIS PLAT 1  
 VOL 52 PG 180

MRS FRANK HERBERT PLAT 1  
 VOL 48 PG 92  
 (16-101-9)

E BOGGS PLAT 1  
 VOL 91 PG 98

E BOGGS REPLAT 1  
 VOL 97 PG 127

345

BELL PLAT 1

01004