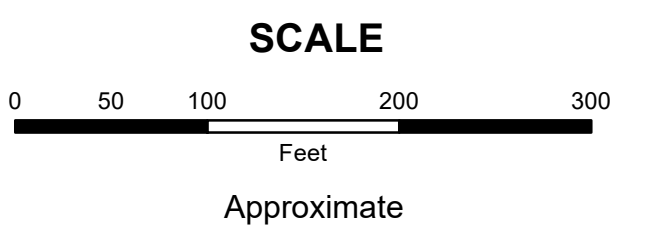


**MAHONING COUNTY
OHIO
SMITH TOWNSHIP
Section 23**

**TAX MAP
16076**



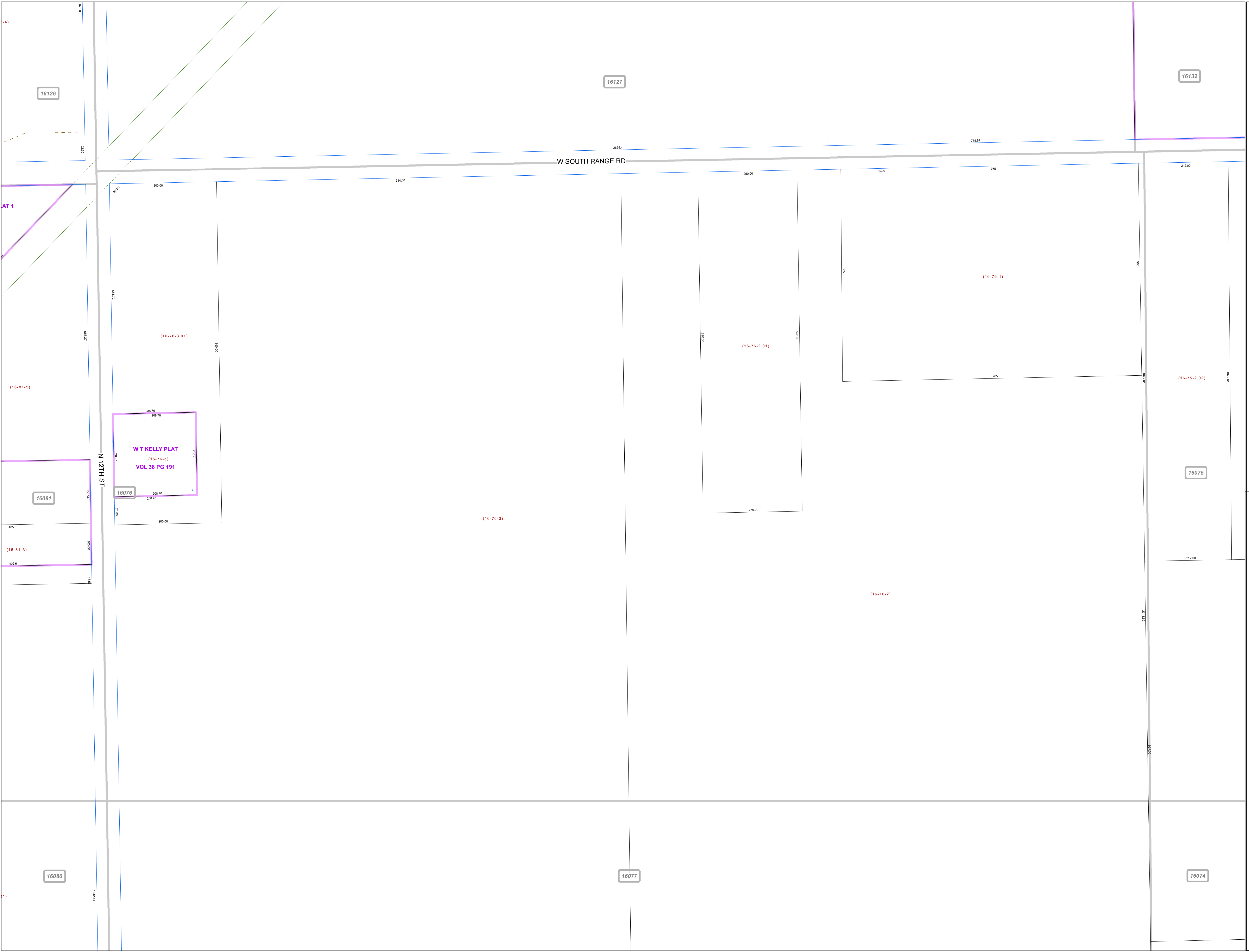
Print Date 1/14/2019

LEGEND

- COUNTY LINE
- TOWNSHIP LINE
- CITY LINE
- VILLAGE LINE
- PLAT OUTLINE
- PARCEL LINE
- OLD PARCEL LINE
- PHASE LINE
- ROAD ROW LINE
- RAILROAD ROW LINE
- PARCEL ID NUMBER
- LOT NUMBER
- PLAT NAME
- TAX MAP NUMBER

**SMITH TOWNSHIP
Index Map**

16125	16128	
16126	16127	16132
16081	16076	16075
16080	16077	16074



16126

16127

16132

W SOUTH RANGE RD

N 12TH ST

W T KELLY PLAT
(16-76-5)
VOL 38 PG 191

16081

16076

16075

(16-76-3)

(16-76-2)

16080

16077

16074