

19023

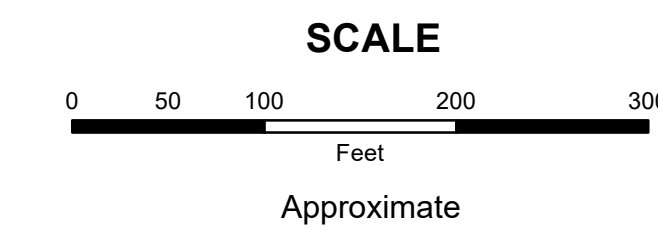
16023

(16-23-10)

16020

MAHONING COUNTY
OHIO
SMITH TOWNSHIP
 Section 29

TAX MAP
16022

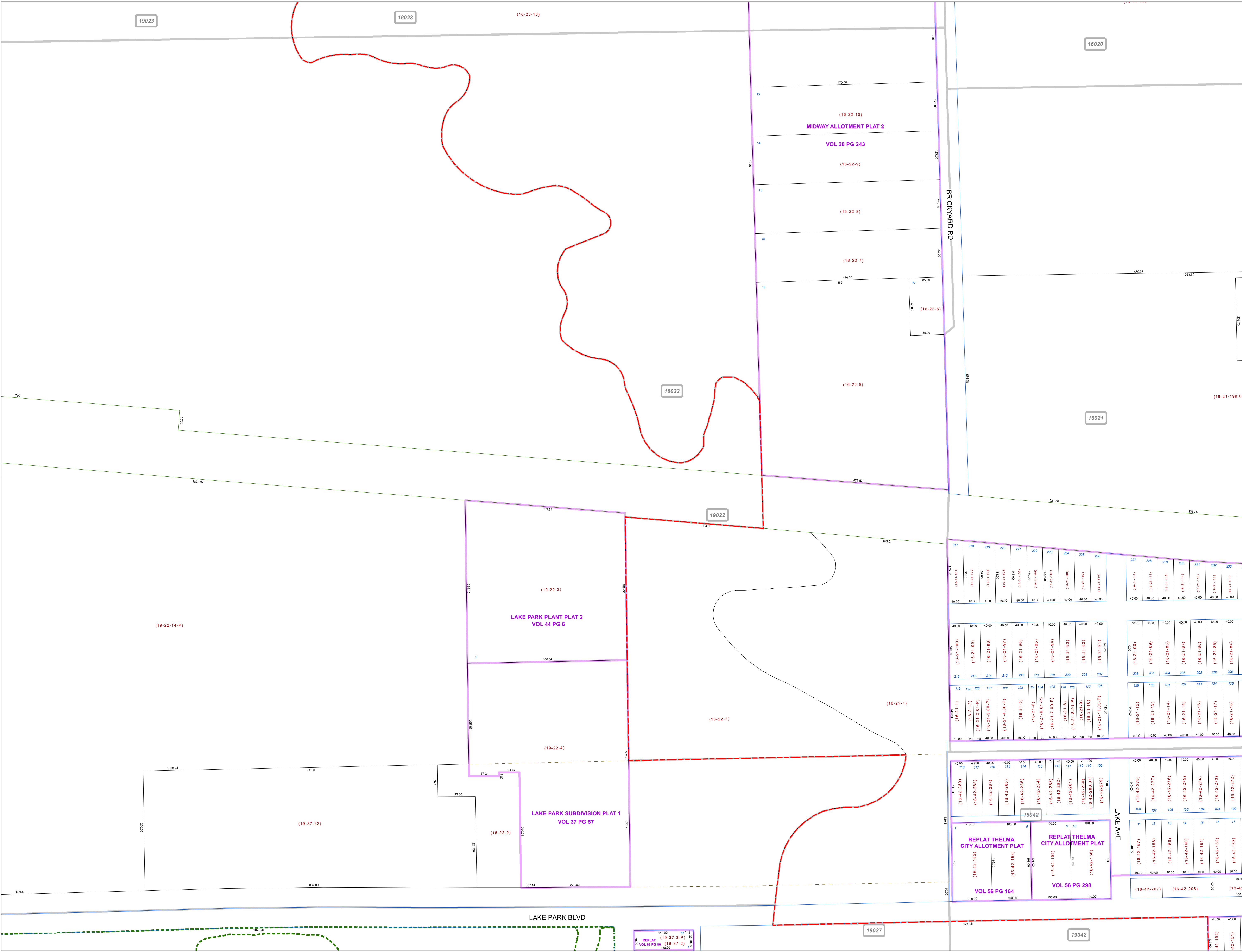
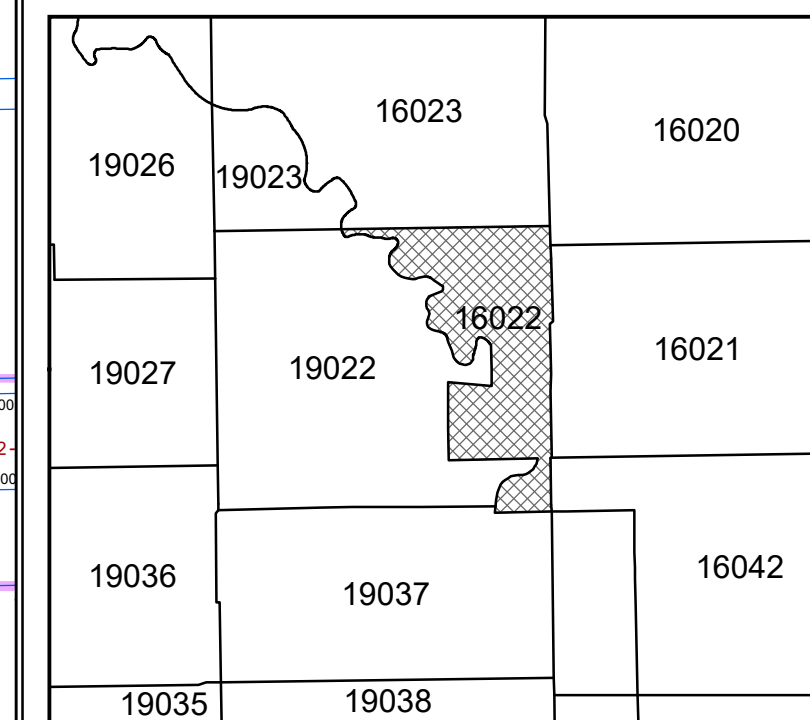


Print Date 1/14/2019

LEGEND

- COUNTY LINE
- TOWNSHIP LINE
- CITY LINE
- VILLAGE LINE
- PLAT OUTLINE
- PARCEL LINE
- OLD PARCEL LINE
- PHASE LINE
- ROAD ROW LINE
- RAILROAD ROW LINE
- PARCEL ID NUMBER
- LOT NUMBER
- PLAT NAME
- TAX MAP NUMBER

SMITH TOWNSHIP
 Index Map



140.00
 REPLAT (19-37-3-P)
 VOL 61 PG 88
 150.00

19037

19042