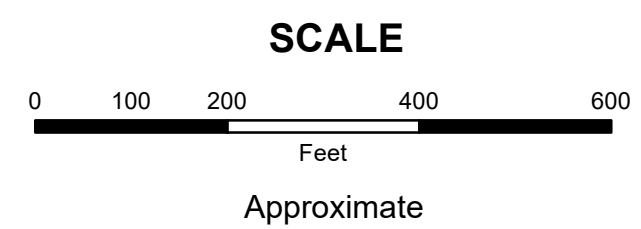


MAHONING COUNTY
OHIO
GREEN TOWNSHIP
Section 7 South Half

TAX MAP
09005



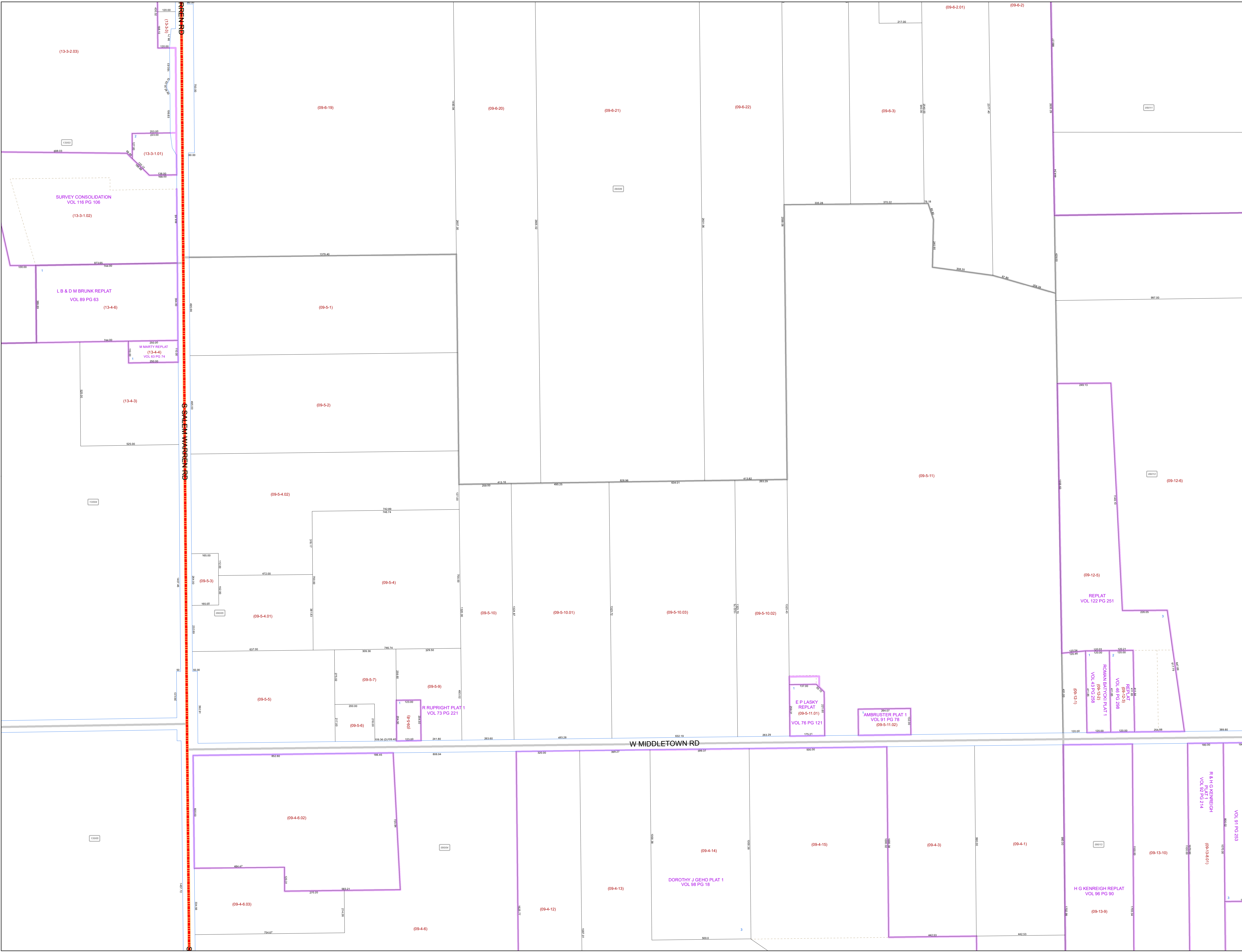
Print Date 1/14/2019

LEGEND

- COUNTY LINE
- TOWNSHIP LINE
- CITY LINE
- VILLAGE LINE
- PLAT OUTLINE
- PARCEL LINE
- OLD PARCEL LINE
- PHASE LINE
- ROAD ROW LINE
- RAILROAD ROW LINE
- (01-20-1.03) PARCEL ID NUMBER
- 345 LOT NUMBER
- BELL PLAT 1 PLAT NAME
- 01004 TAX MAP NUMBER

GREEN TOWNSHIP
Index Map

13002	09007	09010
13003	09006	09011
13004	09005	09012
13005	09004	09013
13006	09003	09014



SALEM WARREN RD

W MIDDLETOWN RD

R & H KENREIGH
 PLAT 1
 VOL 92 PG 214

H G KENREIGH REPLAT
 VOL 96 PG 90

DOROTHY J GEHO PLAT 1
 VOL 98 PG 18

R RUPPRIGHT PLAT 1
 VOL 73 PG 221

E P LASKY
 REPLAT
 (09-5-11.01)
 VOL 76 PG 121

JAMRUSTER PLAT 1
 VOL 91 PG 78
 (09-5-11.02)

ROMAN REAR PLAT 1
 VOL 43 PG 288
 (09-5-1)

REPLAT
 VOL 122 PG 251

SURVEY CONSOLIDATION
 VOL 116 PG 106

L B & M BRUNK REPLAT
 VOL 89 PG 63

M MARTY REPLAT
 (13-4-4)
 VOL 83 PG 74