

**MAHONING COUNTY  
OHIO**  
**BEAVER TOWNSHIP**  
Section 25  
**TAX MAP  
05014**



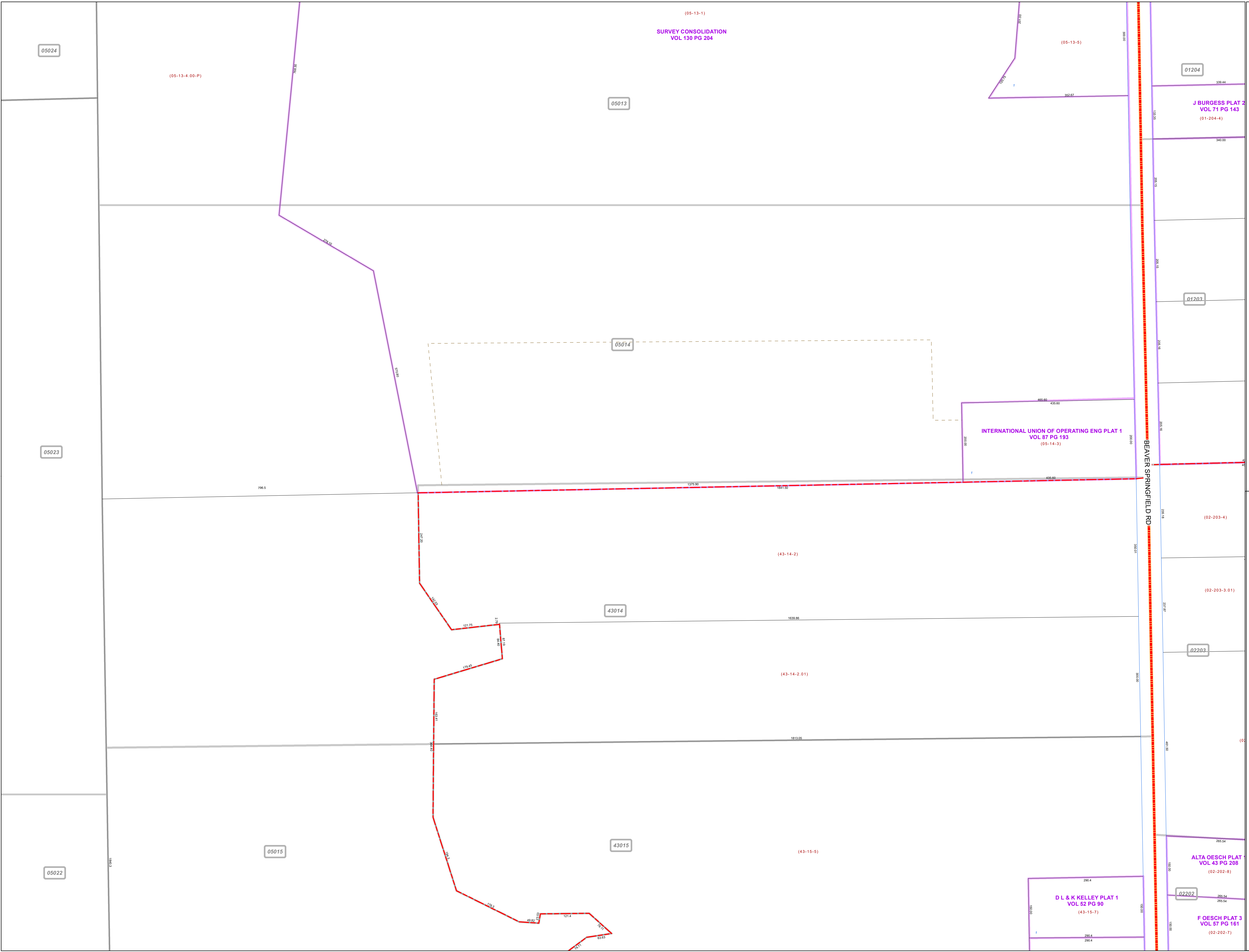
Print Date 1/14/2019

**LEGEND**

- COUNTY LINE
- - - - - TOWNSHIP LINE
- · - · - · CITY LINE
- - - - - VILLAGE LINE
- PLAT OUTLINE
- PARCEL LINE
- - - - - OLD PARCEL LINE
- · - · - · PHASE LINE
- ROAD ROW LINE
- RAILROAD ROW LINE
- (01-20-1.03) PARCEL ID NUMBER
- 345 LOT NUMBER
- BELL PLAT 1 PLAT NAME
- 01004 TAX MAP NUMBER

**BEAVER TOWNSHIP  
Index Map**

05024	05013	01204
05023	05014	01203
	43014	02203
05022	05015	02202



05024

(05-13-4.00-P)

05013

(05-13-1)  
SURVEY CONSOLIDATION  
VOL 130 PG 204

(05-13-5)

01204

J BURGESS PLAT 2  
VOL 71 PG 143  
(01-204-4)

TAX MAP  
05014

01203

05014

INTERNATIONAL UNION OF OPERATING ENG PLAT 1  
VOL 87 PG 193  
(05-14-3)

BEAVER SPRINGFIELD RD

(02-203-4)

(02-203-3.01)

02203

43014

(43-14-2)

(43-14-2.01)

796.5

05023

05015

43015

(43-15-5)

05022

D L & K KELLEY PLAT 1  
VOL 52 PG 90  
(43-15-7)

02202

F OESCH PLAT 3  
VOL 57 PG 161  
(02-202-7)

ALTA OESCH PLAT 1  
VOL 43 PG 208  
(02-202-8)