

MAHONING COUNTY
OHIO
SPRINGFIELD TOWNSHIP
Section 20

TAX MAP
01169



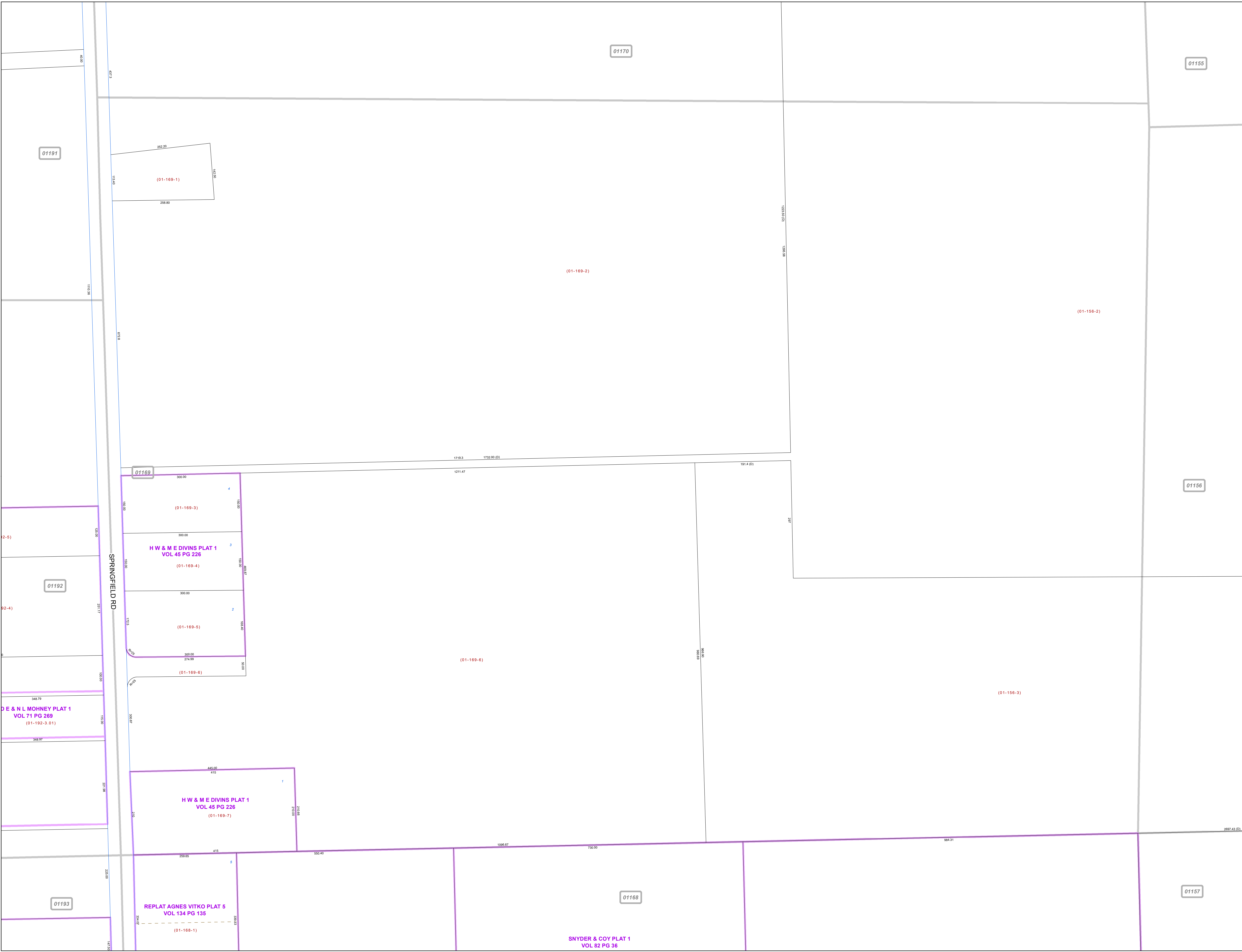
Print Date 1/14/2019

LEGEND

- COUNTY LINE
- TOWNSHIP LINE
- CITY LINE
- VILLAGE LINE
- PLAT OUTLINE
- PARCEL LINE
- OLD PARCEL LINE
- PHASE LINE
- ROAD ROW LINE
- RAILROAD ROW LINE
- (01-20-1.03) PARCEL ID NUMBER
- 345 LOT NUMBER
- BELL PLAT 1 PLAT NAME
- 01004 TAX MAP NUMBER

SPRINGFIELD TOWNSHIP
Index Map

01191	01170	01154
01192	01169	01156
01193	01168	01157



SNYDER & COY PLAT 1
 VOL 82 PG 36

REPLAT AGNES VITKO PLAT 5
 VOL 134 PG 135

H W & M E DIVINS PLAT 1
 VOL 45 PG 226

H W & M E DIVINS PLAT 1
 VOL 45 PG 226

D E & N L MOHNEY PLAT 1
 VOL 71 PG 269

01191

01192

01193

01170

01168

01155

01156

01157

SPRINGFIELD RD

(01-169-1)

(01-169-2)

(01-156-2)

(01-169-3)

(01-169-4)

(01-169-5)

(01-169-6)

(01-169-6)

(01-169-7)

(01-168-1)

(01-156-3)