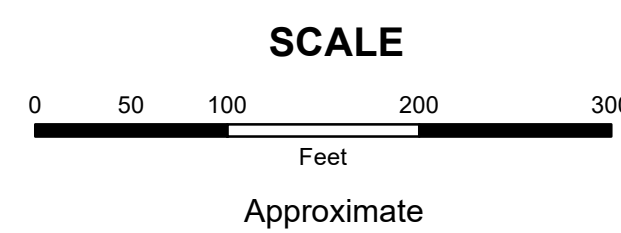


**MAHONING COUNTY
OHIO
SPRINGFIELD TOWNSHIP
Section 8**

**TAX MAP
01150**



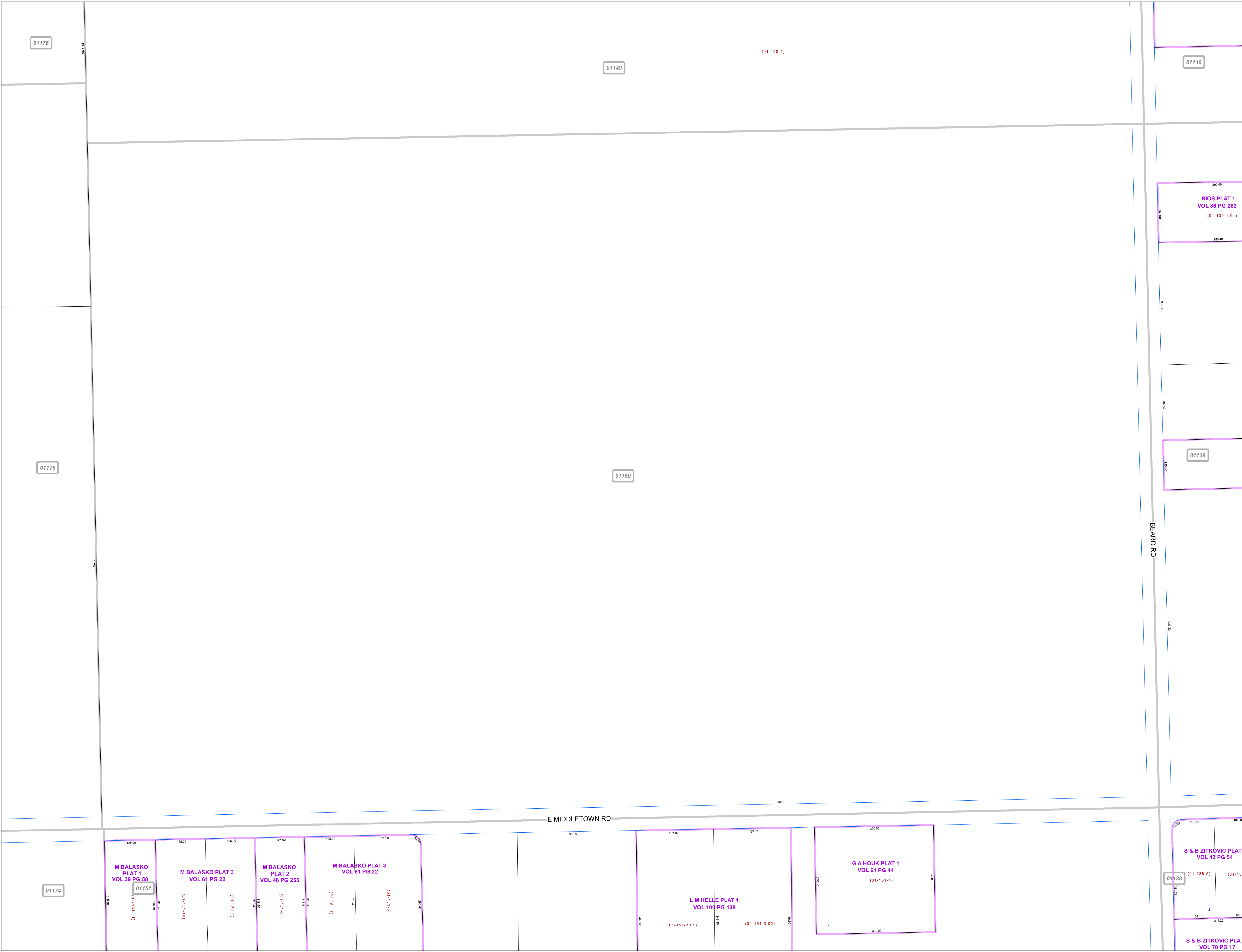
Print Date 1/14/2019

LEGEND

- COUNTY LINE
- TOWNSHIP LINE
- CITY LINE
- VILLAGE LINE
- PLAT OUTLINE
- PARCEL LINE
- OLD PARCEL LINE
- PHASE LINE
- ROAD ROW LINE
- RAILROAD ROW LINE
- (01-20-1.03) PARCEL ID NUMBER
- 345 LOT NUMBER
- BELL PLAT 1 PLAT NAME
- 01004 TAX MAP NUMBER

**SPRINGFIELD TOWNSHIP
Index Map**

01176	01149	01140
01175	01150	01139
01174	01151	01138



01176

01149

01140

01175

01150

01139

01174

01151

01138

M BALASKO PLAT 1
VOL 39 PG 58

M BALASKO PLAT 3
VOL 61 PG 22

M BALASKO PLAT 2
VOL 48 PG 255

M BALASKO PLAT 3
VOL 81 PG 22

L M HELLE PLAT 1
VOL 100 PG 138

G A HOUK PLAT 1
VOL 61 PG 44

S & B ZITKOVIC PLAT 1
VOL 43 PG 54

S & B ZITKOVIC PLAT
VOL 70 PG 17

(01-150-1)

RIOS PLAT 1
VOL 86 PG 263
(01-139-1.01)

(01-139-1.01)

(01-20-1.03)

345

BELL PLAT 1

01004