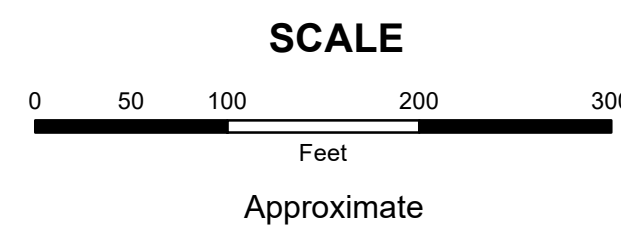


MAHONING COUNTY
OHIO
SPRINGFIELD TOWNSHIP
 Section 10

TAX MAP
01103



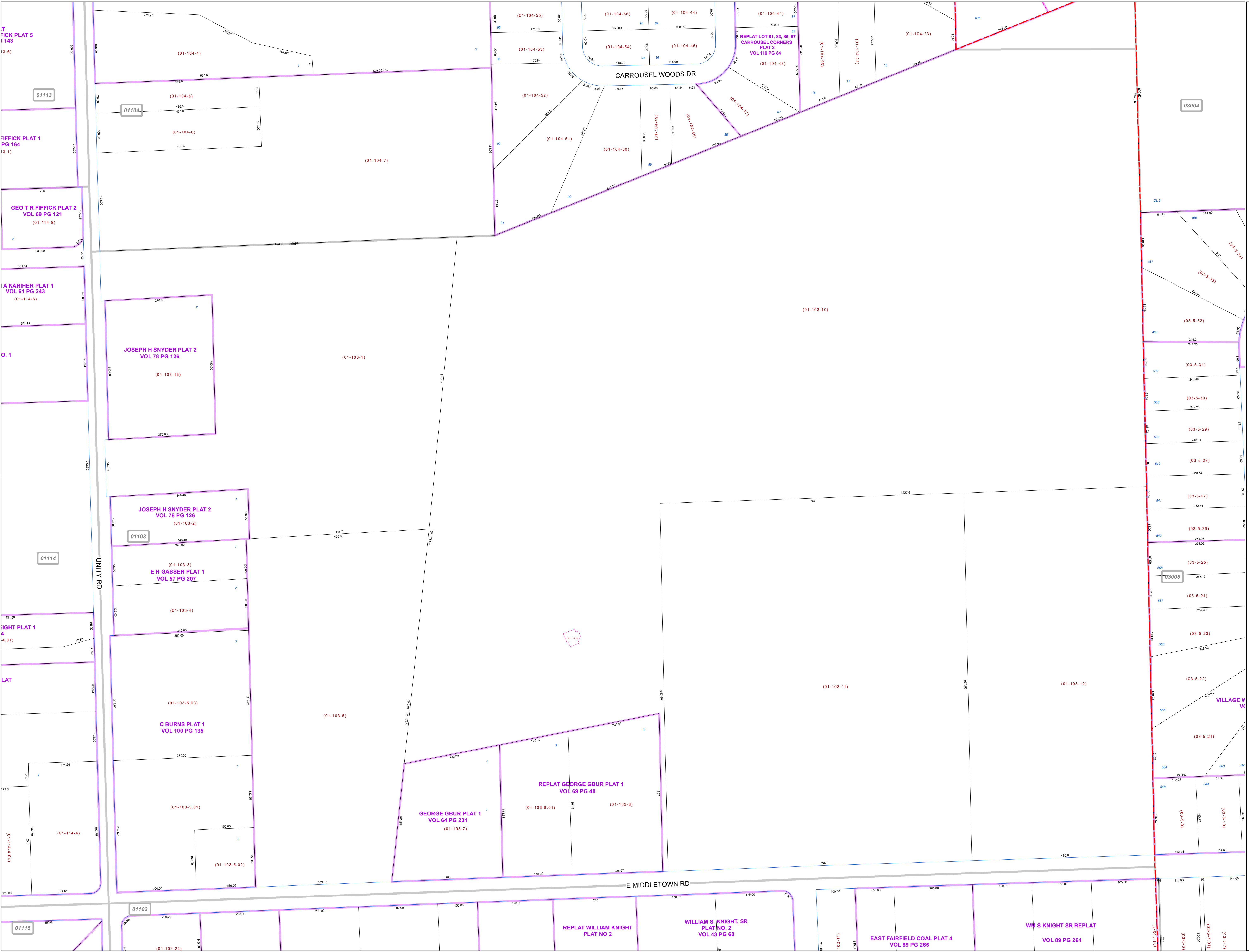
Print Date 1/14/2019

LEGEND

- COUNTY LINE
- TOWNSHIP LINE
- CITY LINE
- VILLAGE LINE
- PLAT OUTLINE
- PARCEL LINE
- OLD PARCEL LINE
- PHASE LINE
- ROAD ROW LINE
- RAILROAD ROW LINE
- PARCEL ID NUMBER
- LOT NUMBER
- PLAT NAME
- TAX MAP NUMBER

SPRINGFIELD TOWNSHIP
Index Map

01112	01105	
01113	01104	03004
01114	01103	03005
01115	01102	01079



FFICK PLAT 5
 143
 3-6)

01113

FFICK PLAT 1
 PG 164
 3-1)

01104

FFICK PLAT 2
 VOL 69 PG 121
 (01-114-8)

A KARIHER PLAT 1
 VOL 61 PG 243
 (01-114-6)

D. 1

JOSEPH H SNYDER PLAT 2
 VOL 78 PG 126
 (01-103-13)

JOSEPH H SNYDER PLAT 2
 VOL 78 PG 126
 (01-103-2)

01103

E H GASSER PLAT 1
 VOL 57 PG 207
 (01-103-3)

IGHT PLAT 1
 4.01)

LAT

C BURNS PLAT 1
 VOL 100 PG 135
 (01-103-5.03)

(01-114-4.001)

(01-103-5.01)

(01-103-5.02)

01102

01115

(01-102-24)

REPLAT LOT 81, 83, 85, 87
 CARROUSEL CORNERS
 PLAT 3
 VOL 110 PG 84
 (01-104-41) (01-104-42) (01-104-43) (01-104-44) (01-104-45) (01-104-46) (01-104-47) (01-104-48) (01-104-49) (01-104-50) (01-104-51) (01-104-52) (01-104-53) (01-104-54) (01-104-55)

REPLAT GEORGE GBUR PLAT 1
 VOL 69 PG 48
 (01-103-7) (01-103-8.01) (01-103-8)

REPLAT WILLIAM KNIGHT
 PLAT NO 2

WILLIAM S. KNIGHT, SR
 PLAT NO. 2
 VOL 43 PG 60

EAST FAIRFIELD COAL PLAT 4
 VOL 89 PG 265

WM S KNIGHT SR REPLAT
 VOL 89 PG 264

03004

03005

(01-20-1.03)
 345
 BELL PLAT 1
 01004