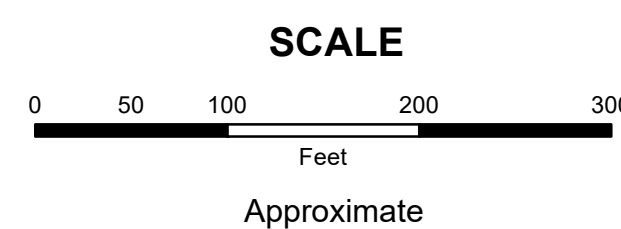


**MAHONING COUNTY
OHIO
SPRINGFIELD TOWNSHIP
Section 12**

**TAX MAP
01033**



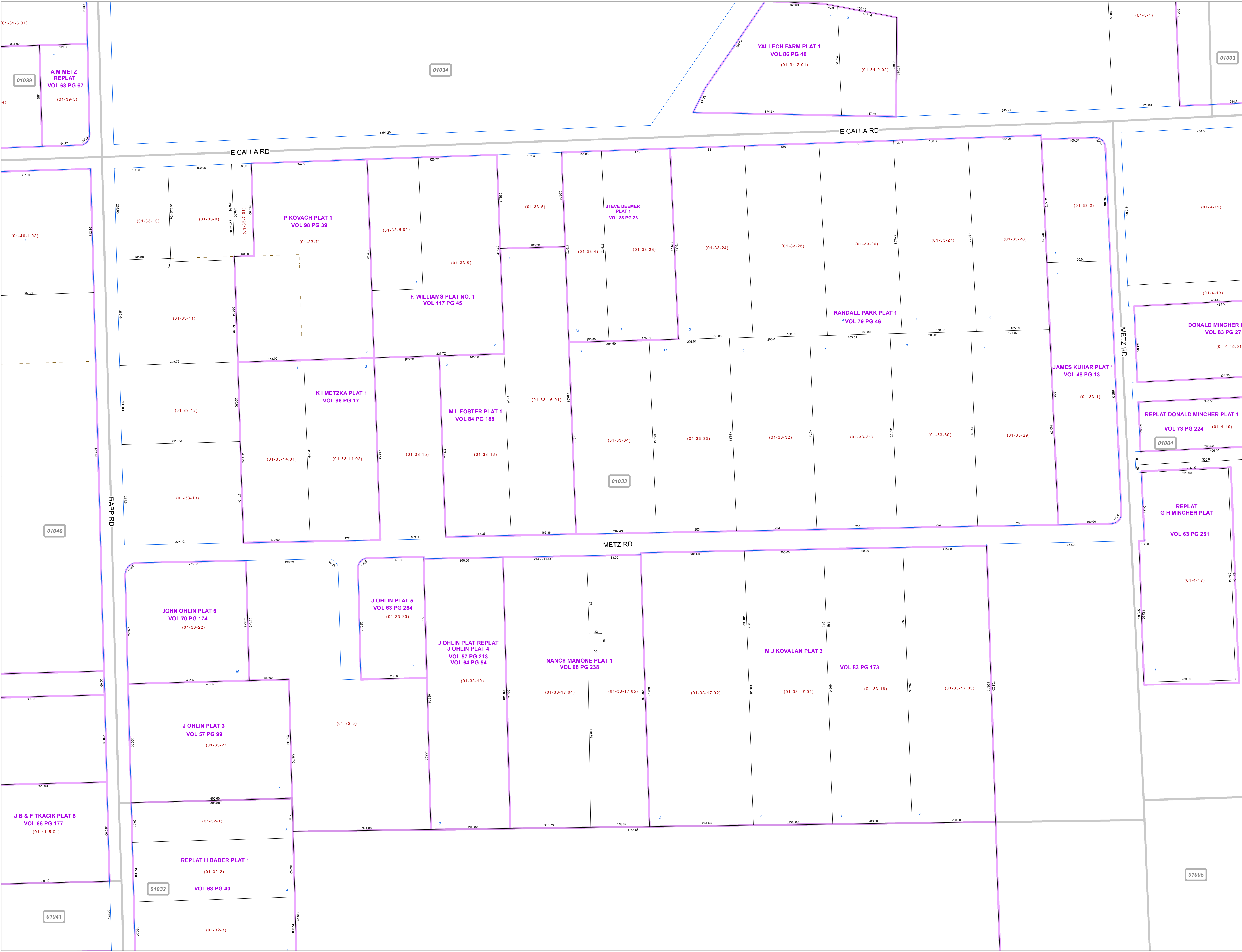
Print Date 1/14/2019

LEGEND

- COUNTY LINE
- TOWNSHIP LINE
- CITY LINE
- VILLAGE LINE
- PLAT OUTLINE
- PARCEL LINE
- OLD PARCEL LINE
- PHASE LINE
- ROAD ROW LINE
- RAILROAD ROW LINE
- PARCEL ID NUMBER
- LOT NUMBER
- PLAT NAME
- TAX MAP NUMBER

**SPRINGFIELD TOWNSHIP
Index Map**

01039	01034	01003
01040	01033	01004
01041	01032	01005



01005

01003

01033

01034

01039

01040

01032

01041

01-39-5.01

A M METZ REPLAT VOL 68 PG 67 (01-39-5)

YALLECH FARM PLAT 1 VOL 86 PG 40 (01-34-2.01)

P KOVACH PLAT 1 VOL 98 PG 39 (01-33-7)

STEVE DEEMER PLAT 1 VOL 88 PG 23 (01-33-4)

F WILLIAMS PLAT NO. 1 VOL 117 PG 45 (01-33-6.01)

K I METZKA PLAT 1 VOL 98 PG 17 (01-33-12)

M L FOSTER PLAT 1 VOL 84 PG 188 (01-33-16.01)

RANDALL PARK PLAT 1 VOL 79 PG 46 (01-33-26)

JAMES KUHAR PLAT 1 VOL 48 PG 13 (01-33-1)

REPLAT DONALD MINCHER PLAT 1 VOL 73 PG 224 (01-4-19)

REPLAT G H MINCHER PLAT VOL 63 PG 251 (01-4-17)

JOHN OHLIN PLAT 6 VOL 70 PG 174 (01-33-22)

J OHLIN PLAT 5 VOL 63 PG 254 (01-33-20)

J OHLIN PLAT REPLAT J OHLIN PLAT 4 VOL 57 PG 213 VOL 64 PG 54 (01-33-19)

NANCY MAMONE PLAT 1 VOL 98 PG 238 (01-33-17.04)

M J KOVALAN PLAT 3 VOL 83 PG 173 (01-33-17.01)

J OHLIN PLAT 3 VOL 57 PG 99 (01-33-21)

J B & F TKACIK PLAT 5 VOL 66 PG 177 (01-41-5.01)

REPLAT H BADER PLAT 1 VOL 63 PG 40 (01-32-2)

(01-32-3)